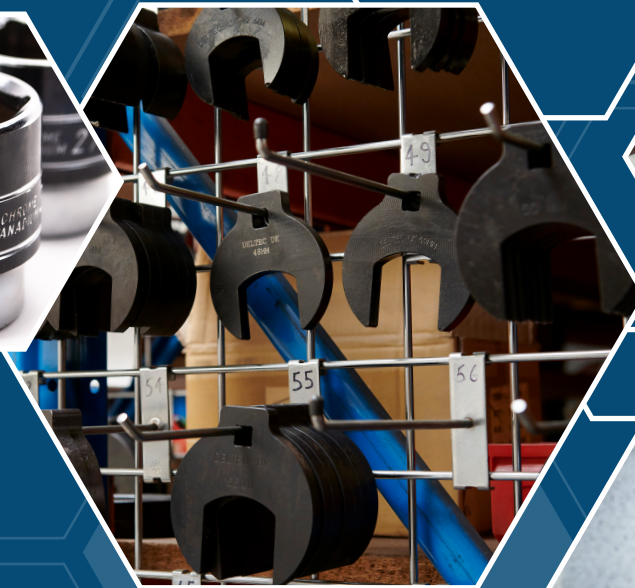
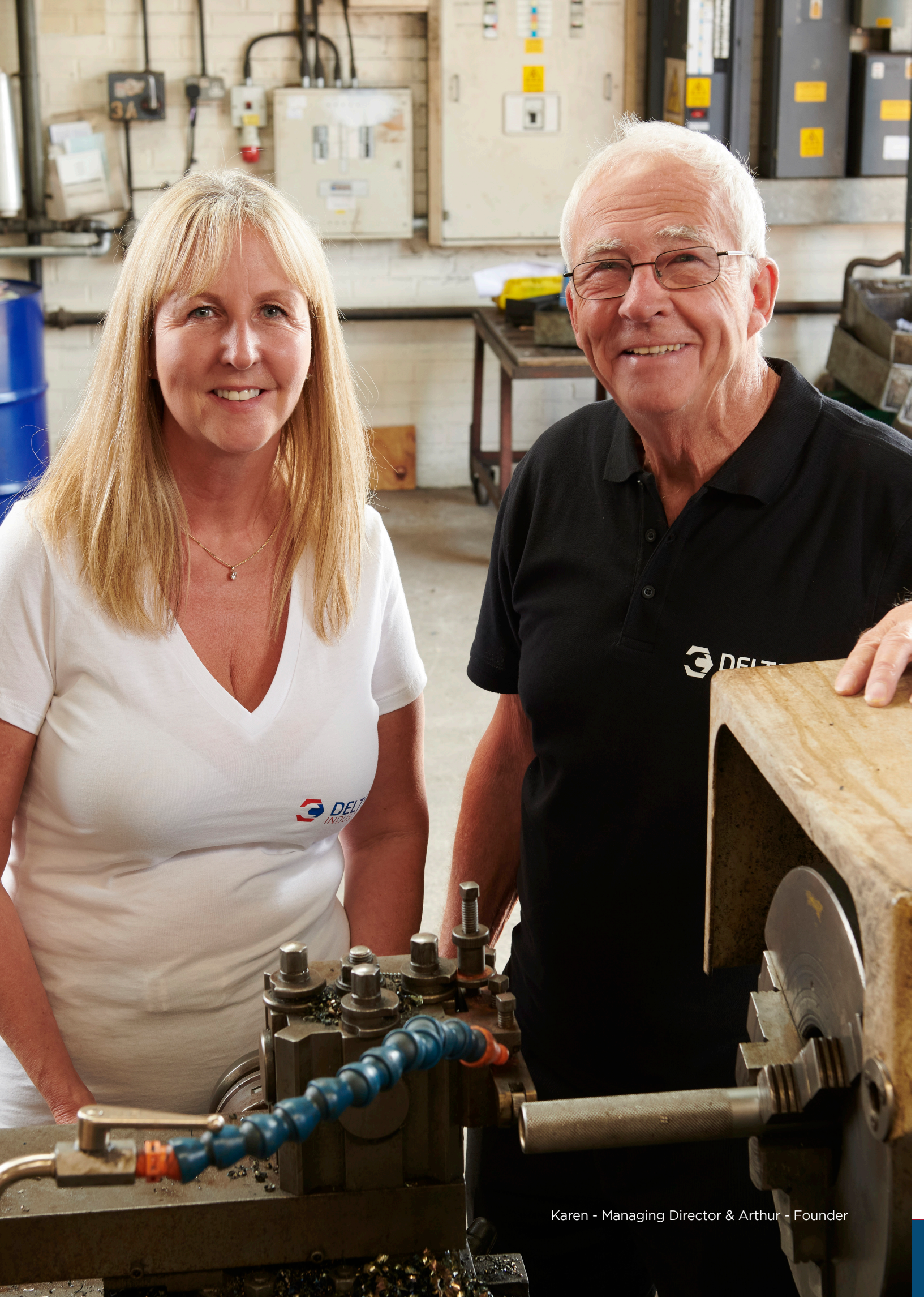


BRITISH MADE
PROFESSIONAL TOOLS

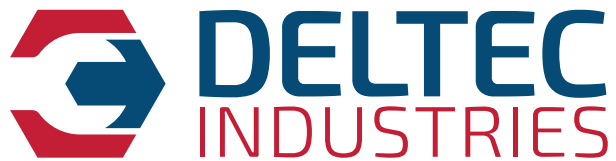
DELTEC
INDUSTRIES



+44 (0)1253 885 747
sales@deltecindustries.co.uk
www.deltecindustries.co.uk



Karen - Managing Director & Arthur - Founder



ABOUT US

Deltec Industries is a family-owned company built on strong family values. Founded 45 years ago in 1979 by Arthur Dell, a skilled precision engineer, Deltec Industries has become the premier manufacturer of Impact Sockets and Bespoke tools in the UK.

Our expertise lies in producing Impact Sockets, Specialised Sockets, accessories, and tools tailored to various industries including Automotive, Construction, Bridge and Marine building and maintenance, Wind, Oil & Gas, Mining, and more. Our mission at Deltec Industries is to deliver exceptional products that meet the highest standards of quality. With four decades of experience in the tool industry, we strive for perfection with a focus on zero defects and unwavering reliability. All our products adhere to International DIN standards, ensuring top-notch performance and durability.

Deltec Industries leads the way in product innovation, research and development, engineering excellence, and rigorous quality testing.

Our commitment to excellence has earned us a stellar reputation in regions such as the UK, Europe, America, Asia, Australia, New Zealand, and beyond. We have garnered the trust and long-term support of global clients who value our superior quality, outstanding service, competitive pricing, and punctual delivery.

This year, we have made significant investments in two new CNC machines, one for Turning and the other for Milling. These cutting-edge machines enable us to handle much larger diameters than ever before. As the only company in the UK capable of manufacturing in-house from raw bar to the final product, we take great pride in being British manufacturers. Deltec stands out as the premier manufacturer in the UK.

Our commitment to service and quality is unwavering, as evidenced by our ISO accreditation. We prioritize excellence in service and quality, ensuring that our customers receive nothing but the best.



BRANDING

Creating your own brand of products is a new and exciting venture for any company. However, it takes some specialised skills and planning to get it right - that's where we come in.

Deltec can laser mark our products with your company's logo, company's name, another company's name, specific part numbers, individual names, references and date of manufacture. Private labelling offers multiple benefits that you will not have access to when you are reselling products from other brands.

While big brands tend to dominate product markets, customers often appreciate the novelty and uniqueness of private label products. High-quality private label products may, therefore, offer you a competitive advantage.

We provide private labelling for many companies, with their own company details on we find end users are blown away to get their own name on a Deltec impact socket, accessories, set, tape measures, tools etc.

Please contact us for more details and we can discuss your requirements.

CAPABILITY

14,000 Sq ft of factory and warehouses

New CNC Turning, Milling, Turning/Milling for extra efficiency

High volume production

Sub contracting

Prototyping

SPECIALS MADE TO ORDER

The only manufacturer in the UK to produce sockets and specials in house from start to finish.

CNC Machines with the capabilities of manufacturing sockets / specials 450mm dia and 1000mm long - 300mm of across flats of Hexagon.

Stocking from 3/8" Dr to 3.1/2" Dr in Metric, AF Imperial and BSW Whitworth.

We have large stock of raw materials and high alloy steels to fulfil most requirements. Materials we work with include; a wide variety of Steels (Alloy, Carbon, Stainless), Stainless Steel, Aluminium, Brass, Bronze, Copper, Nickel, Titanium, Nylon even Gold.

Deltec employs helpful knowledgeable staff who problem solve every day.

Here to advise and answer any technical queries, we can liase with your customer to problem solve.

Deltec offer a lifetime warranty on all our sockets (excluding, thin walls, step down, and moving parts - specials)



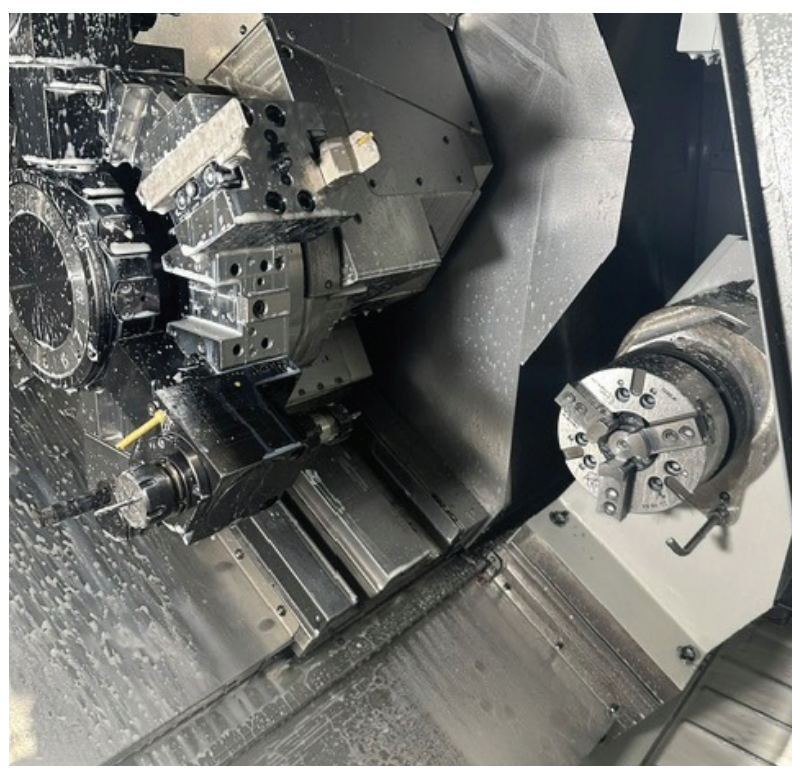
FAST TRACK SERVICE

Deltec offer a Fast Track service, for any emergency jobs that just cannot wait, we can turn these around within 24 - 48 hours, please do call us.

Largest sockets and spanner made to date both 300mm across flats. Large range of Sockets and Accessories our current stock sits just over 500,000 products.



S E R V I C E - Q U A L I T Y - P R I C E - C O M P E T I T I V E



BUY ONLINE
www.deltetechnologies.co.uk

CALL
01253 885 747

EMAIL
sales@deltetechnologies.co.uk

Specials Made to Order	5	Hex Accessories	
Impact Sockets		Hex Holders & Bits	40
1/4" & 3/8"	8	Hex Bars	41
1/2"	9	Spanners	
3/4" MM & AF	10 - 11	Crowfoot Spanners - MM & AF	42 - 43
1" MM & AF	12 - 13	16mm Spigot Crowfoot Spanners	44 - 45
1. 1/2" MM & AF	14 - 15	22mm Spigot Crowfoot Spanners	46 - 47
2. 1/2"	16	Stacking Sockets MM & AF	48
Whitworth BSW	17 - 18	Chrome Socket Sets	49
Impact Sockets - Bi Hexagon		Boxed Impact Sets	50
1/2"	19	Loose Sockets for Sets	50
3/4" MM & AF	20 - 21	Slogging Spanners	51
1" MM & AF	22 - 23	Combination Spanners	52
1. 1/2" MM & AF	24 - 25	Single Open Ended Spanners	53
2. 1/2" MM & AF	26	Hand Tools	55 - 57
Impact Sockets - Square		Technical	
1/2" MM & AF	27	Bolt Sizes & Dual Sizes	58
3/4" MM & AF	28	Rings & Pins	58
1" MM & AF	29	Hex Size Chart	59
Bi Square Impact Sockets	30		
Impact Sockets - Octogan			
Octogan	31		
Tap Holders	31		
Channel Sockets	31		
Impact Sockets - Bi-Square			
MM & AF	32		
Accessories			
Adaptors, Universal Joints, Sleeves	33		
Connectors, T-Bars, Breaker Bars	34		
Extensions	35		
Male Hexagon Drivers			
MM & AF	36		
Torx			
Male	38		
Female	39		



Impact Sockets - 1/4" & 3/8" Sq. Dr.

1/4" SQ. DR. IMPACT SOCKET - 6 POINT HEXAGON

METRIC - MM STANDARD			METRIC - MM LONG			IMPERIAL - AF STANDARD			IMPERIAL - AF LONG		
Part No.	Size mm	Price £	Part No.	Size mm	Price £	Part No.	Size mm	Price £	Part No.	Size mm	Price £
A4S	4	4.75	A4L	4	8.59	A316AFS	3/16	4.75	A316AFL	3/16	8.59
A45S	4.5	4.75	A45L	4.5	8.59	A732AFS	7/32	4.75	A732AFL	7/32	8.59
A5S	5	4.75	A5L	5	8.59	A14AFS	1/4	4.75	A14AFL	1/4	8.59
A55S	5.5	4.75	A55L	5.5	8.59	A932AFS	9/32	4.75	A932AFL	9/32	8.59
A6S	6	4.75	A6L	6	8.59	A516AFS	5/16	4.75	A516AFL	5/16	8.59
A7S	7	4.75	A7L	7	8.59	A38AFS	3/8	4.75	A38AFL	3/8	8.59
A8S	8	4.75	A8L	8	8.59	A716AFS	7/16	4.75	A716AFL	7/16	8.59
A9S	9	4.75	A9L	9	8.59	A12AFS	1/2	4.75	A12AFL	1/2	8.59
A10S	10	4.75	A10L	10	8.59	A916AFS	9/16	4.75	A916AFL	9/16	8.59
A11S	11	4.75	A11L	11	8.59	A1132AFS	11/32	7.50	A1132AFL	11/32	8.59
A12S	12	4.75	A12L	12	8.59						
A13S	13	4.75	A13L	13	8.59						
A14S	14	4.75	A14L	14	8.59						
A15S	15	4.75	A15L	15	8.59						

3/8" SQ. DR. IMPACT SOCKET - 6 POINT HEXAGON

METRIC - MM STANDARD			METRIC - MM LONG			IMPERIAL - AF STANDARD			IMPERIAL - AF LONG		
Part No.	Size mm	Price £	Part No.	Size mm	Price £	Part No.	Size mm	Price £	Part No.	Size mm	Price £
B6S	6	5.35	B6L	6	9.67	B14AFS	1/4	5.35	B14AFL	1/4	9.67
B7S	7	5.35	B7L	7	9.67	B516AFS	5/16	5.35	B516AFL	5/16	9.67
B8S	8	5.35	B8L	8	9.67	B38AFS	3/8	5.35	B38AFL	3/8	9.67
B9S	9	5.35	B9L	9	9.67	B716AFS	7/16	5.35	B716AFL	7/16	9.67
B10S	10	5.35	B10L	10	9.67	B12AFS	1/2	5.35	B12AFL	1/2	9.67
B11S	11	5.35	B11L	11	9.67	B916AFS	9/16	5.35	B916AFL	9/16	9.67
B12S	12	5.35	B12L	12	9.67	B58AFS	5/8	5.35	B58AFL	5/8	9.67
B13S	13	5.35	B13L	13	9.67	B1116AFS	11/16	5.35	B11A16AFL	11/16	9.67
B14S	14	5.35	B14L	14	9.67	B34AFS	3/4	5.35	B34AFL	3/4	9.67
B15S	15	5.35	B15L	15	9.67	B13A16S	13/16	6.43	B13A16AFL	13/16	10.75
B16S	16	5.35	B16L	16	9.67	B78AFS	7/8	7.51	B78AFL	7/8	11.83
B17S	17	5.35	B17L	17	9.67	B1516AFS	15/16	10.80	B1516AFL	15/16	15.12
B18S	18	5.35	B18L	18	9.67	B1AFS	1	10.80	B1AFL	1	15.12
B19S	19	5.35	B19L	19	9.67						
B20S	20	6.42	B20L	20	10.75						
B21S	21	6.42	B21L	21	10.75						
B22S	22	10.80	B22L	22	11.83						
B24S	24	10.00	B24L	24	15.12						



1/2" SQ. DR. IMPACT SOCKET - 6 POINT HEXAGON

METRIC - MM STANDARD			METRIC - MM LONG		
Part No.	Size mm	Price £	Part No.	Size mm	Price £
C8S	8	5.35	C8L	8	10.30
C9S	9	5.35	C9L	9	10.30
C10S	10	5.35	C10L	10	10.30
C11S	11	5.35	C11L	11	10.30
C12S	12	5.35	C12L	12	10.30
C13S	13	5.35	C13L	13	10.30
C14S	14	5.35	C14L	14	10.30
C15S	15	5.89	C15L	15	10.30
C16S	16	5.89	C16L	16	10.30
C17S	17	5.89	C17L	17	10.30
C18S	18	5.89	C18L	18	10.30
C19S	19	5.89	C19L	19	10.30
C20S	20	5.89	C20L	20	10.30
C21S	21	5.89	C21L	21	10.30
C22S	22	6.30	C22L	22	11.45
C23S	23	6.30	C23L	23	11.45
C24S	24	8.05	C24L	24	12.59
C25S	25	8.05	C25L	25	12.59
C26S	26	8.80	C26L	26	13.17
C27S	27	9.18	C27L	27	13.74
C28S	28	9.45	C28L	28	14.88
C29S	29	10.30	C29L	29	14.88
C30S	30	11.07	C30L	30	16.03
C31S	31	13.17	C31L	31	29.76
C32S	32	13.17	C32L	32	18.32
C33S	33	14.02	C33L	33	19.46
C34S	34	15.45	C34L	34	22.01
C35S	35	17.74	C35L	35	26.33
C36S	36	17.74	C36L	36	27.48
C38S	38	21.46	C38L	38	28.62
C41S	41	25.92	C41L	41	36.72
C46S	46	34.56	C46L	46	49.68

IMPERIAL - AF STANDARD			IMPERIAL - AF LONG		
Part No.	Size mm	Price £	Part No.	Size mm	Price £
C516AFS	5/16	5.35	C516AFL	5/16	10.30
C38AFS	3/8	5.35	C38AFL	3/8	10.30
C716AFS	7/16	5.35	C716AFL	7/16	10.30
C12AFS	1/2	5.35	C12AFL	1/2	10.30
C916AFS	9/16	5.35	C916AFL	9/16	10.30
C58AFS	5/8	5.89	C58AFL	5/8	10.30
C11A16AFS	11/16	5.89	C11A16AFL	11/16	10.30
C34AFS	3/4	5.89	C34AFL	3/4	10.30
C13A16AFS	13/16	5.89	C13A16AFL	13/16	10.30
C78AFS	7/8	6.30	C78AFL	7/8	11.45
C1516AFS	15/16	8.05	C1516AFL	15/16	12.59
C1AFS	1	8.80	C1AFL	1	13.17
C1116AFS	1.1/16	9.18	C1116AFL	1.1/16	14.88
C118AFS	1.1/8	9.67	C118AFL	1.1/8	14.88
C1316AFS	1.3/16	11.07	C1316AFL	1.3/16	16.03
C114AFS	1.1/4	13.17	C114AFL	1.1/4	18.32
C1516AFS	1.5/16	13.17	C1516AFL	1.5/16	19.44
C138AFS	1.3/8	17.74	C138AFL	1.3/8	26.33
C1716AFS	1.7/16	17.74	C1716AFL	1.7/16	30.91
C112AFS	1.1/2	21.46	C112AFL	1.1/2	28.62
C1916AFS	1.9/16	24.30	C1916AFL	1.9/16	30.78
C158AFS	1.5/8	25.92	C158AFL	1.5/8	36.72
C11116AFS	1.11/16	32.40	C11116AFL	1.11/16	43.20
C134AFS	1.3/4	32.40	C134AFL	1.3/4	43.20
C11316AFS	1.13/16	34.56	C11316AFL	1.13/16	49.68
C178AFS	1.7/8	59.40	C178AFL	1.7/8	91.80
C2AFS	2	81.00	C2AFL	2	86.40





Impact Sockets - 3/4" Sq. Dr.

3/4" SQ. DR. IMPACT SOCKET - 6 POINT HEXAGON

METRIC - MM STANDARD			METRIC - MM STANDARD		
Part No.	Size mm	Price £	Part No.	Size mm	Price £
E13S	13	14.26	E41S	41	21.41
E14S	14	14.26	E42S	42	23.70
E15S	15	14.26	E43S	43	24.84
E16S	16	14.26	E44S	44	28.27
E17S	17	14.26	E45S	45	26.73
E18S	18	14.26	E46S	46	28.87
E19S	19	14.26	E47S	47	28.87
E20S	20	14.26	E48S	48	30.73
E21S	21	14.26	E49S	49	32.13
E22S	22	14.26	E50S	50	32.13
E23S	23	14.26	E52S	52	37.80
E24S	24	14.26	E54S	54	44.00
E25S	25	14.26	E55S	55	44.01
E26S	26	14.26	E56S	56	44.01
E27S	27	14.26	E60S	60	49.41
E28S	28	14.26	E65S	65	68.38
E29S	29	14.26	E70S	70	86.40
E30S	30	14.26	E75S	75	97.20
E31S	31	14.58	E80S	80	118.80
E32S	32	14.58	E85S	85	129.60
E33S	33	15.66	E90S	90	145.80
E34S	34	16.74	E95S	95	162.00
E35S	35	16.74	E100S	100	194.40
E36S	36	16.74	E105S	105	226.80
E37S	37	20.25	E110S	110	248.40
E38S	38	20.25	E115S	115	270.00
E40S	40	21.41	E120S	120	302.40

METRIC - MM LONG			METRIC - MM LONG		
Part No.	Size mm	Price £	Part No.	Size mm	Price £
E13L	13	22.63	E41L	41	36.29
E14L	14	22.63	E42L	42	39.50
E15L	15	22.63	E43L	43	39.72
E16L	16	22.63	E44L	44	39.72
E17L	17	22.63	E45L	45	39.72
E18L	18	22.63	E46L	46	39.72
E19L	19	22.63	E47L	47	39.72
E20L	20	22.63	E48L	48	39.72
E21L	21	22.63	E49L	49	39.72
E22L	22	22.63	E50L	50	43.79
E23L	23	22.63	E52L	52	48.33
E24L	24	22.63	E54L	54	65.34
E25L	25	22.63	E55L	55	65.61
E26L	26	22.63	E56L	56	65.61
E27L	27	22.63	E60L	60	65.61
E28L	28	22.63	E65L	65	89.21
E29L	29	22.63	E70L	70	102.60
E30L	30	22.63	E75L	75	118.80
E31L	31	23.17	E80L	80	199.58
E32L	32	23.17	E85L	85	207.58
E33L	33	24.83	E90L	90	226.80
E34L	34	25.19	E95L	95	263.09
E35L	35	25.19	E100L	100	299.38
E36L	36	25.87	E105L	105	334.80
E37L	37	31.48	E110L	110	381.02
E38L	38	35.14	E115L	115	453.60
E40L	40	36.29	E120L	120	453.60



3/4" SQ. DR. IMPACT SOCKET - 6 POINT HEXAGON

IMPERIAL - AF STANDARD			IMPERIAL - AF STANDARD		
Part No.	Size mm	Price £	Part No.	Size mm	Price £
E12AFS	1/2	14.26	E218AFS	2.1/8	44.00
E916AFS	9/16	14.26	E2316AFS	2.3/16	44.01
E58AFS	5/8	14.26	E214AFS	2.1/4	48.88
E11A16FS	11/16	14.26	E2516AFS	2.5/16	48.88
E34AFS	3/4	14.26	E238AFS	2.3/8	49.41
E13A16FS	13/16	14.26	E2716AFS	2.7/16	54.81
E78AFS	7/8	14.26	E212AFS	2.1/2	60.38
E15A16FS	15/16	14.26	E2916AFS	2.9/16	68.38
E1AFS	1	14.26	E258AFS	2.5/8	79.92
E1116AFS	1.1/16	14.26	E21116AFS	2.11/16	86.40
E118AFS	1.1/8	14.26	E234AFS	2.3/4	86.40
E1316AFS	1.3/16	14.26	E21316AFS	2.13/16	86.40
E114AFS	1.1/4	14.58	E278AFS	2.7/8	86.40
E1516AFS	1.5/16	14.54	E21516AFS	2.15/16	97.20
E138AFS	1.3/8	16.74	E3AFS	3	118.80
E1716AFS	1.7/16	21.41	E3116AFS	3.1/16	118.80
E112AFS	1.1/2	21.41	E318AFS	3.1/8	118.80
E1916AFS	1.9/16	21.41	E3316AFS	3.3/16	118.80
E158AFS	1.5/8	21.41	E314AFS	3.1/4	118.80
E11116AFS	1.11/16	24.84	E3516AFS	3.5/16	129.60
E134AFS	1.3/4	28.27	E338AFS	3.3/8	129.60
E11316AFS	1.13/16	28.27	E3716AFS	3.7/16	145.80
E178AFS	1.7/8	29.42	E312AFS	3.1/2	145.80
E11516AFS	1.15/16	32.13	E334AFS	3.3/4	162.00
E2AFS	2	37.43	E31516AFS	3.15/16	194.40
E2116AFS	2.1/16	40.23			

IMPERIAL - AF LONG			IMPERIAL - AF LONG		
Part No.	Size mm	Price £	Part No.	Size mm	Price £
E12AFL	1/2	22.63	E218AFL	2.1/8	65.35
E916AFL	9/16	22.63	E2316AFL	2.3/16	65.83
E58AFL	5/8	22.63	E214AFL	2.1/4	67.77
E11A16FL	11/16	22.63	E2516AFL	2.5/16	72.82
E34AFL	3/4	22.63	E238AFL	2.3/8	78.64
E13A16FL	13/16	22.63	E2716AFL	2.7/16	85.86
E78AFL	7/8	22.63	E212AFL	2.1/2	86.78
E15A16FL	15/16	22.63	E2916AFL	2.9/16	89.21
E1AFL	1	22.63	E258AFL	2.5/8	89.21
E1116AFL	1.1/16	22.63	E21116AFL	2.11/16	102.60
E118AFL	1.1/8	22.63	E234AFL	2.3/4	102.60
E1316AFL	1.3/16	22.63	E21316AFL	2.13/16	118.80
E114AFL	1.1/4	23.17	E278AFL	2.7/8	118.80
E1516AFL	1.5/16	25.19	E21516AFL	2.15/16	118.80
E138AFL	1.3/8	25.19	E3AFL	3	199.58
E1716AFL	1.7/16	30.56	E3116AFL	3.1/16	199.58
E112AFL	1.1/2	35.14	E318AFL	3.1/8	199.58
E1916AFL	1.9/16	36.29	E3316AFL	3.3/16	199.58
E158AFL	1.5/8	36.29	E314AFL	3.1/4	207.58
E11116AFL	1.11/16	39.72	E3516AFL	3.5/16	207.58
E134AFL	1.3/4	39.72	E338AFL	3.3/8	226.80
E11316AFL	1.13/16	40.86	E3716AFL	3.7/16	226.80
E178AFL	1.7/8	41.49	E312AFL	3.1/2	263.09
E11516AFL	1.15/16	41.49	E334AFL	3.3/4	263.09
E2AFL	2	49.16	E31516AFL	3.15/16	299.38
E2116AFL	2.1/16	49.41			



Impact Sockets - 1" Sq. Dr.

1" SQ. DR. IMPACT SOCKET - 6 POINT HEXAGON

METRIC - MM STANDARD			METRIC - MM STANDARD		
Part No.	Size mm	Price £	Part No.	Size mm	Price £
F16S	16	24.25	F45S	45	32.35
F17S	17	24.25	F46S	46	32.35
F18S	18	24.25	F47S	47	34.51
F19S	19	24.25	F48S	48	37.75
F20S	20	24.25	F49S	49	39.96
F21S	21	24.25	F50S	50	42.36
F22S	22	24.25	F52S	52	46.94
F23S	23	24.25	F54S	54	48.06
F24S	24	24.25	F55S	55	49.19
F25S	25	24.25	F56S	56	50.31
F26S	26	24.25	F60S	60	53.78
F27S	27	24.25	F65S	65	73.22
F28S	28	24.25	F70S	70	108.72
F29S	29	24.25	F75S	75	115.56
F30S	30	24.25	F80S	80	126.78
F31S	31	24.25	F85S	85	148.53
F32S	32	24.25	F90S	90	171.43
F33S	33	24.25	F95S	95	182.88
F34S	34	24.25	F100S	100	210.60
F35S	35	24.79	F105S	105	221.40
F36S	36	24.79	F110S	110	342.31
F37S	37	25.33	F115S	115	349.16
F38S	38	25.33	F120S	120	440.75
F40S	40	26.41	F125S	125	486.00
F41S	41	26.95	F130S	130	511.92
F42S	42	29.65	F135S	135	702.00
F43S	43	30.73	F140S	140	750.60
F44S	44	31.27			

METRIC - MM LONG			METRIC - MM LONG		
Part No.	Size mm	Price £	Part No.	Size mm	Price £
F16L	16	32.35	F45L	45	52.38
F17L	17	32.35	F46L	46	52.38
F18L	18	32.35	F47L	47	56.11
F19L	19	32.35	F48L	48	68.69
F20L	20	32.35	F49L	49	75.60
F21L	21	32.35	F50L	50	75.60
F22L	22	32.35	F52L	52	80.14
F23L	23	32.35	F54L	54	85.81
F24L	24	32.35	F55L	55	85.81
F25L	25	32.35	F56L	56	86.35
F26L	26	32.35	F60L	60	99.09
F27L	27	32.35	F65L	65	118.80
F28L	28	32.35	F70L	70	148.77
F29L	29	32.35	F75L	75	180.31
F30L	30	32.35	F80L	80	200.34
F31L	31	32.35	F85L	85	301.86
F32L	32	32.35	F90L	90	323.46
F33L	33	32.35	F95L	95	366.66
F34L	34	32.35	F100L	100	430.92
F35L	35	36.34	F105L	105	459.00
F36L	36	40.92	F110L	110	462.32
F37L	37	43.44	F115L	115	474.12
F38L	38	44.55	F120L	120	502.20
F40L	40	45.74	F125L	125	561.60
F41L	41	46.94	F130L	130	639.36
F42L	42	50.33	F135L	135	702.00
F43L	43	52.38	F140L	140	777.60
F44L	44	52.38			



1" SQ. DR. IMPACT SOCKET - 6 POINT HEXAGON

IMPERIAL - AF STANDARD			IMPERIAL - AF STANDARD		
Part No.	Size mm	Price £	Part No.	Size mm	Price £
F58AFS	5/8	24.25	F278AFS	2.7/8	109.62
F11A16FS	11/16	24.25	F21516AFS	2.15/16	115.56
F34AFS	3/4	24.25	F3AFS	3	116.43
F13A16FS	13/16	24.25	F3116AFS	3.1/16	125.93
F78AFS	7/8	24.25	F318AFS	3.1/8	126.79
F15A16FS	15/16	24.25	F3316AFS	3.3/16	143.10
F1AFS	1	24.25	F314AFS	3.1/4	147.69
F1116AFS	1.1/16	24.25	F3516AFS	3.5/16	154.55
F118AFS	1.1/8	24.25	F338AFS	3.3/8	163.40
F1316AFS	1.3/16	24.25	F3716AFS	3.7/16	166.00
F144AFS	1.1/4	24.25	F312AFS	3.1/2	169.13
F1516AFS	1.5/16	24.25	F3916AFS	3.9/16	169.21
F138AFS	1.3/8	24.79	F358AFS	3.5/8	172.80
F1716AFS	1.7/16	24.79	F31116AFS	3.11/16	177.44
F112AFS	1.1/2	25.33	F334AFS	3.3/4	182.88
F1916AFS	1.9/16	25.87	F31316AFS	3.13/16	188.89
F158AFS	1.5/8	26.95	F378AFS	3.7/8	194.35
F11116AFS	1.11/16	30.73	F31516AFS	3.15/16	194.62
F134AFS	1.3/4	31.27	F4AFS	4	200.07
F11316AFS	1.13/16	32.35	F4116AFS	4.1/16	200.07
F178AFS	1.7/8	34.45	F418AFS	4.1/8	221.40
F11516AFS	1.15/16	42.36	F4316AFS	4.3/16	228.96
F2AFS	2	42.36	F414AFS	4.1/4	262.17
F2116AFS	2.1/16	46.87	F4516AFS	4.5/16	262.17
F218AFS	2.1/8	48.06	F438AFS	4.3/8	297.65
F2316AFS	2.3/16	50.37	F4716AFS	4.7/16	320.54
F214AFS	2.1/4	51.46	F412AFS	4.1/2	342.30
F2516AFS	2.5/16	52.60	F458AFS	4.5/8	400.68
F238AFS	2.3/8	53.78	F434AFS	4.3/4	456.78
F2716AFS	2.7/16	67.50	F478AFS	4.7/8	529.2
F212AFS	2.1/2	73.22	F5AFS	5	572.40
F2916AFS	2.9/16	73.22	F518AFS	5.1/8	604.80
F258AFS	2.5/8	93.81	F514AFS	5.1/4	669.60
F21116AFS	2.11/16	97.25	F538AFS	5.3/8	750.60
F234AFS	2.3/4	108.72	F512AFS	5.1/2	756.00
F21316AFS	2.13/16	109.62			

IMPERIAL - AF LONG			IMPERIAL - AF LONG		
Part No.	Size mm	Price £	Part No.	Size mm	Price £
F58AFL	5/8	32.35	F278AFL	2.7/8	171.61
F11A16FL	11/16	32.35	F21516AFL	2.15/16	180.31
F34AFL	3/4	32.35	F3AFL	3	183.17
F13A16FL	13/16	32.35	F3116AFL	3.1/16	194.62
F78AFL	7/8	32.35	F318AFL	3.1/8	200.34
F15A16FL	15/16	32.35	F3316AFL	3.3/16	263.30
F1AFL	1	32.35	F314AFL	3.1/4	274.75
F1116AFL	1.1/16	32.35	F3516AFL	3.5/16	309.10
F118AFL	1.1/8	32.35	F338AFL	3.3/8	343.44
F1316AFL	1.3/16	32.35	F3716AFL	3.7/16	343.44
F114AFL	1.1/4	32.35	F312AFL	3.1/2	343.44
F1516AFL	1.5/16	32.40	F3916AFL	3.9/16	349.16
F138AFL	1.3/8	36.34	F358AFL	3.5/8	365.19
F1716AFL	1.7/16	36.34	F31116AFL	3.11/16	366.34
F112AFL	1.1/2	44.55	F334AFL	3.3/4	383.51
F1916AFL	1.9/16	44.58	F31316AFL	3.13/16	383.51
F158AFL	1.5/8	46.94	F378AFL	3.7/8	399.55
F11116AFL	1.11/16	52.38	F31516AFL	3.15/16	406.40
F134AFL	1.3/4	52.37	F4AFL	4	410.99
F11316AFL	1.13/16	52.38	F4116AFL	4.1/16	410.99
F178AFL	1.7/8	56.95	f418afil	4.1/8	459.00
F11516AFL	1.15/16	75.62	F4316AFL	4.3/16	463.32
F2AFL	2	75.60	F414AFL	4.1/4	463.32
F2116AFL	2.1/16	79.56	F4516AFL	4.5/16	463.32
F218AFL	2.1/8	85.81	F438AFL	4.3/8	469.80
F2316AFL	2.3/16	85.75	F4716AFL	4.7/16	471.96
F214AFL	2.1/4	93.75	F412AFL	4.1/2	479.67
F2516AFL	2.5/16	101.77	F458AFL	4.5/8	502.20
F238AFL	2.3/8	99.09	F434AFL	4.3/4	534.60
F2716AFL	2.7/16	125.82	F478AFL	4.7/8	561.60
F212AFL	2.1/2	125.82	F5AFL	5	606.96
F2916AFL	2.9/16	118.80	F518AFL	5.1/8	639.36
F258AFL	2.5/8	137.11	F514AFL	5.1/4	702.00
F21116AFL	2.11/16	148.71	F538AFL	5.3/8	775.00
F234AFL	2.3/4	148.77	F512AFL	5.1/2	777.60
F21316AFL	2.13/16	160.16			



Impact Sockets - 1.1/2" Sq. Dr.

1.1/2" SQ. DR. IMPACT SOCKET - 6 POINT HEXAGON

METRIC - MM STANDARD			METRIC - MM STANDARD			METRIC - MM LONG			METRIC - MM LONG		
Part No.	Size mm	Price £	Part No.	Size mm	Price £	Part No.	Size mm	Price £	Part No.	Size mm	Price £
G30S	30	102.06	G55S	55	102.06	G30L	30	210.60	G55L	55	302.40
G32S	32	102.06	G56S	56	102.06	G32L	32	210.60	G56L	56	313.20
G33S	33	102.06	G60S	60	119.56	G33L	33	210.60	G60L	60	334.80
G34S	34	102.06	G65S	65	128.52	G34L	34	210.60	G65L	65	356.40
G35S	35	102.06	G70S	70	150.12	G35L	35	210.60	G70L	70	388.80
G36S	36	102.06	G75S	75	171.72	G36L	36	210.60	G75L	75	421.20
G38S	38	102.06	G76S	76	203.77	G38L	38	210.60	G76L	76	448.20
G40S	40	102.06	G80S	80	204.93	G40L	40	210.60	G80L	80	451.44
G41S	41	102.06	G85S	85	230.37	G41L	41	210.60	G85L	85	464.40
G42S	42	102.06	G90S	90	262.98	G42L	42	210.60	G90L	90	475.20
G43S	43	102.06	G95S	95	297.59	G43L	43	210.60	G95L	95	502.20
G44S	44	102.06	G100S	100	330.86	G44L	44	210.60	G100L	100	518.40
G45S	45	102.06	G105S	105	342.90	G45L	45	210.60	G105L	105	534.60
G46S	46	102.06	G110S	110	377.21	G46L	46	248.40	G110L	110	550.80
G47S	47	102.06	G115S	115	411.56	G47L	47	248.40	G115L	115	581.04
G48S	48	102.06	G120S	120	457.63	G48L	48	248.40	G120L	120	646.92
G49S	49	102.06	G125S	125	514.03	G49L	49	248.40	G125L	125	691.20
G50S	50	102.06	G130S	130	526.61	G50L	50	275.40	G130L	130	723.60
G51S	51	102.06	G135S	135	595.30	G51L	51	276.48	G135L	135	747.36
G52S	52	102.06	G140S	140	629.64	G52L	52	278.64	G140L	140	844.56
G53S	53	102.06	G145S	145	642.60	G53L	53	280.80	G145L	145	885.60
G54S	54	102.06	G150S	150	718.31	G54L	54	291.60	G150L	150	970.92



1.1/2" SQ. DR. IMPACT SOCKET - 6 POINT HEXAGON

IMPERIAL - AF STANDARD			IMPERIAL - AF STANDARD			IMPERIAL - AF LONG			IMPERIAL - AF LONG		
Part No.	Size mm	Price £	Part No.	Size mm	Price £	Part No.	Size mm	Price £	Part No.	Size mm	Price £
G118AFS	1.1/8	102.06	G314AFS	3.1/4	227.82	G118AFL	1.1/8	248.40	G314AFL	3.1/4	463.32
G1316AFS	1.3/16	102.06	G3516AFS	3.5/16	236.87	G1316AFL	1.3/16	248.40	G3516AFL	3.5/16	480.60
G114AFS	1.1/4	102.06	G338AFS	3.3/8	251.56	G114AFL	1.1/4	248.40	G338AFL	3.3/8	486.00
G138AFS	1.3/8	102.06	G3716AFS	3.7/16	251.56	G138AFL	1.3/8	248.40	G3716AFL	3.7/16	496.80
G1716AFS	1.7/16	102.06	G312AFS	3.1/2	251.56	G1716AFL	1.7/16	248.40	G312AFL	3.1/2	513.00
G112AFS	1.1/2	102.06	G3916AFS	3.9/16	263.30	G112AFL	1.1/2	248.40	G3916AFL	3.9/16	561.60
G1916AFS	1.9/16	102.06	G358AFS	3.5/8	263.30	G1916AFL	1.9/16	248.40	G358AFL	3.5/8	615.60
G158AFS	1.5/8	102.06	G31116AFS	3.11/16	284.90	G158AFL	1.5/8	248.40	G31116AFL	3.11/16	648.00
G11116AFS	1.11/16	102.06	G334AFS	3.3/4	297.59	G11116AFL	1.11/16	248.40	G334AFL	3.3/4	675.00
G134AFS	1.3/4	102.06	G31316AFS	3.13/16	297.65	G134AFL	1.3/4	248.40	G31316AFL	3.13/16	702.00
G11316AFS	1.13/16	102.06	G378AFS	3.7/8	297.65	G11316AFL	1.13/16	248.40	G378AFL	3.7/8	729.00
G178AFS	1.7/8	102.06	G31516AFS	3.15/16	331.99	G178AFL	1.7/8	248.40	G31516AFL	3.15/16	750.60
G11516AFS	1.15/16	102.06	G4AFS	4	342.90	G11516AFL	1.15/16	248.40	G4AFL	4	766.80
G2AFS	2	102.06	G4116AFS	4.1/16	342.90	G2AFL	2	276.48	G4116AFL	4.1/16	772.20
G2116AFS	2.1/16	102.06	G418AFS	4.1/8	342.90	G2116AFL	2.1/16	276.48	G418AFL	4.1/8	783.00
G218AFS	2.1/8	102.06	G4316AFS	4.3/16	366.33	G218AFL	2.1/8	280.80	G4316AFL	4.3/16	788.40
G2316AFS	2.3/16	102.06	G414AFS	4.1/4	366.34	G2316AFL	2.3/16	297.00	G414AFL	4.1/4	793.80
G214AFS	2.1/4	102.06	G4516AFS	4.5/16	377.78	G214AFL	2.1/4	307.80	G4516AFL	4.5/16	820.88
G2516AFS	2.5/16	108.76	G438AFS	4.3/8	388.66	G2516AFL	2.5/16	318.60	G438AFL	4.3/8	842.40
G238AFS	2.3/8	119.56	G4716AFS	4.7/16	388.66	G238AFL	2.3/8	334.80	G4716AFL	4.7/16	864.00
G2716AFS	2.7/16	128.52	G412AFS	4.1/2	389.23	G2716AFL	2.7/16	340.20	G412AFL	4.1/2	885.60
G212AFS	2.1/2	128.52	G458AFS	4.5/8	410.98	G212AFL	2.1/2	345.60	G458AFL	4.5/8	923.40
G2916AFS	2.9/16	128.52	G434AFS	4.3/4	456.78	G2916AFL	2.9/16	356.40	G434AFL	4.3/4	950.40
G258AFS	2.5/8	139.32	G478AFS	4.7/8	523.80	G258AFL	2.5/8	367.20	G478AFL	4.7/8	993.60
G21116AFS	2.11/16	139.32	G5AFS	5	642.60	G21116AFL	2.11/16	378.00	G5AFL	5	1,036.80
G234AFS	2.3/4	150.12	G518AFS	5.1/8	691.20	G234AFL	2.3/4	388.80	G518AFL	5.1/8	1,078.92
G21316AFS	2.13/16	160.92	G514AFS	5.1/4	745.20	G21316AFL	2.13/16	399.60	G514AFL	5.1/4	1,101.60
G278AFS	2.7/8	168.58	G538AFS	5.3/8	793.80	G278AFL	2.7/8	410.40	G538AFL	5.3/8	1,134.00
G21516AFS	2.15/16	171.72	G512AFS	5.1/2	853.20	G21516AFL	2.15/16	421.20	G512AFL	5.1/2	1,166.40
G3AFS	3	203.77	G558AFS	5.5/8	966.60	G3AFL	3	437.40	G558AFL	5.5/8	1,198.18
G3116AFS	3.1/16	204.93	G534AFS	5.3/4	999.00	G3116AFL	3.1/16	442.80	G534AFL	5.3/4	1,231.20
G318AFS	3.1/8	204.93	G578AFS	5.7/8	1,047.60	G134AFL	3.1/8	451.44	G578AFL	5.7/8	1,263.60
G3316AFS	3.3/16	227.82	G6AFS	6	1,074.60	G3316AFL	3.3/16	453.60	G6AFL	6	1,296.00



Impact Sockets - 2.1/2" Sq. Dr.

2.5" SQ. DR. STANDARD LENGTH IMPACT SOCKET - 6 POINT HEXAGON

METRIC - MM STANDARD			METRIC - MM STANDARD			IMPERIAL - AF STANDARD			IMPERIAL - AF STANDARD		
Part No.	Size mm	Price £	Part No.	Size mm	Price £	Part No.	Size mm	Price £	Part No.	Size mm	Price £
H43S	43	511.43	H140S	140	1,007.00	H178AFS	1.7/8	511.43	H3916AFS	3.9/16	604.42
H45S	45	511.43	H145S	145	1,084.00	H2AFS	2	511.43	H358AFS	3.5/8	604.42
H46S	46	511.43	H150S	150	1,285.00	H218AFS	2.1/8	511.43	H31116AFS	3.11/16	604.42
H52S	52	511.43	H155S	155	1,472.00	H2316AFS	2.3/16	511.43	H334AFS	3.3/4	635.45
H54S	54	604.42	H160S	160	1,782.00	H214AFS	2.1/4	511.43	H31316AFS	3.3/4	635.45
H55S	55	604.42	H165S	165	1,844.00	H2516AFS	2.5/16	511.43	H378AFS	3.7/8	650.91
H56S	56	604.42	H170S	170	1,844.00	H238AFS	2.3/8	604.42	H31516AFS	3.15/16	650.91
H58S	58	604.42	H175S	175	2,061.00	H2716AFS	2.7/16	604.42	H4AFS	4	650.91
H60S	60	604.42	H180S	180	2,138.00	H212AFS	2.1/2	604.42	H418AFS	4.1/8	650.91
H65S	65	604.42	H185S	185	2,138.00	H2916AFS	2.9/16	604.42	H414AFS	4.1/4	681.91
H70S	70	604.42	H190S	190	2,694.00	H258AFS	2.5/8	604.42	H438AFS	4.3/8	681.91
H75S	75	604.42	H195S	195	2,783.00	H21116AFS	2.11/16	604.42	H412AFS	4.1/2	743.90
H80S	80	604.42	H200S	200	2,967.00	H234AFS	2.3/4	604.42	H458AFS	4.5/8	743.90
H85S	85	604.42	H205S	205	3,228.00	H21316AFS	2.13/16	604.42	H434AFS	4.3/4	743.90
H90S	90	626.12	H210S	210	3,458.00	H278AFS	2.7/8	604.42	H478AFS	4.7/8	743.90
H95S	95	635.45	H215S	215	3,485.00	H3AFS	3	604.42	H5AFS	5	852.38
H100S	100	650.91	H220S	220	4,416.00	H3116AFS	3.1/16	604.42	H518AFS	5.1/8	852.38
H105S	105	650.91	H225S	225	4,416.00	H318AFS	3.1/8	604.42	H514AFS	5.1/4	852.38
H110S	110	681.91	H230S	230	4,750.00	H3316AFS	3.3/16	604.42	H538AFS	5.3/8	920.00
H115S	115	681.91	H235S	235	4,993.00	H314AFS	3.1/4	604.42	H512AFS	5.1/2	1,007.00
H120S	120	743.90	H240S	240	5,151.00	H3516AFS	3.5/16	604.42	H558AFS	5.5/8	1,084.00
H125S	125	743.90	H245S	245	5,309.00	H338AFS	3.3/8	604.42	H534AFS	5.3/4	1,285.00
H130S	130	852.39	H250S	250	6,027.00	H3716AFS	3.7/16	604.42	H578AFS	5.7/8	1,285.00
H135	135	929.88	H255S	255	6,724.00	H312AFS	3.1/2	604.42	H6AFS	6	1,472.00



3/8" SQ. DR. IMPACT SOCKET 6 POINT HEXAGON - WHITWORTH

STANDARD			LONG		
Part No.	Size mm	Price £	Part No.	Size mm	Price £
B18WS	1/8	34.56	B18WL	1/8	47.52
B316WS	3/16	34.56	B316WL	3/16	47.52
B14WS	1/4	34.56	B14WL	1/4	47.52
B516WS	5/16	34.56	B516WL	5/16	47.52
B38WS	3/8	34.56	B38WL	3/8	47.52
B716WS	7/16	48.60	B716WL	7/16	62.64

3/4" SQ. DR. IMPACT SOCKET 6 POINT HEXAGON - WHITWORTH

STANDARD			LONG		
Part No.	Size mm	Price £	Part No.	Size mm	Price £
E38WS	3/8	43.20	E38WL	3/8	64.80
E716WS	7/16	43.20	E716WL	7/16	64.80
E12WS	1/2	43.20	E12WL	1/2	64.80
E916WS	9/16	43.20	E916WL	9/16	64.80
E58WS	5/8	43.20	E58WL	5/8	64.80
E1116WS	11/16	43.20	E1116WL	11/16	64.80
E34WS	3/4	43.20	E34WL	3/4	64.80
E1316WS	13/16	43.20	E1316WL	13/16	64.80
E78WS	7/8	43.20	E78WL	7/8	64.80
E1516WS	15/16	43.20	E1516WL	15/16	64.80
E1WS	1	64.80	E1WL	1	81.00
E116WS	1.1/16	64.80	E116WL	1.1/16	81.00
E118WS	1.1/8	64.80	E118WL	1.1/8	81.00
E114WS	1.1/4	75.00	E114WL	1.1/4	110.00
E138WS	1.3/8	86.40	E138WL	1.3/8	129.60
E112WS	1.1/2	102.60	E112WL	1.1/2	151.20
E158WS	1.5/8	102.60	E158WL	1.5/8	162.00
E134WS	1.3/4	102.60	E134WL	1.3/4	172.80
E178WS	1.7/8	102.60	E178WL	1.7/8	183.60
E2WS	2	102.60	E2WL	2	194.40

1/2" SQ. DR. IMPACT SOCKET 6 POINT HEXAGON - WHITWORTH

STANDARD			LONG		
Part No.	Size mm	Price £	Part No.	Size mm	Price £
C18WS	1/8	38.88	C18WL	1/8	51.84
C316WS	3/16	38.88	C316WL	3/16	51.84
C14WS	1/4	38.88	C14WL	1/4	51.84
C516WS	5/16	38.88	C516WL	5/16	51.84
C38WS	3/8	38.88	C38WL	3/8	51.84
C716WS	7/16	38.88	C716WL	7/16	51.84
C12WS	1/2	38.88	C12WL	1/2	51.84
C916WS	9/16	38.88	C916WL	9/16	51.84
C58WS	5/8	38.88	C58WL	5/8	51.84
C1116WS	11/16	38.88	C1116WL	11/16	51.84
C33S	3/4	38.88	C33L	3/4	51.84
C1316WS	13/16	38.88	C1316WL	13/16	54.00
C78WS	7/8	43.20	C78WL	7/8	56.16
C1516WS	15/16	59.40	C1516WL	15/16	75.60
C1WS	1	64.80	C1WL	1	81.00





Impact Sockets - 1" & 1.1/2" Sq. Dr. - Whitworth

1" SQ. DR. IMPACT SOCKET 6 POINT HEXAGON - WHITWORTH

STANDARD			LONG		
Part No.	Size mm	Price £	Part No.	Size mm	Price £
F12WS	1/2	40.00	F12WL	1/2	60.00
F916WS	9/16	40.00	F916WL	9/16	60.00
F28S	5/8	40.00	F28L	5/8	60.00
F1116WS	11/16	40.00	F1116WL	11/16	60.00
F34WS	3/4	40.00	F34WL	3/4	60.00
F1316WS	13/16	54.00	F1316WL	13/16	81.00
F78WS	7/8	54.00	F78WL	7/8	81.00
F1516WS	15/16	54.00	F1516WL	15/16	81.00
F1WS	1	64.80	F1WL	1	97.20
F116WS	1.1/16	64.80	F116WL	1.1/16	97.20
F118WS	1.1/8	64.80	F118WL	1.1/8	97.20
F114WS	1.1/4	80.00	F114WL	1.1/4	120.00
F138WS	1.3/8	86.40	F138WL	1.3/8	129.60
F112WS	1.1/2	129.60	F112WL	1.1/2	194.90
F158WS	1.5/8	162.00	F158WL	1.5/8	243.00
F134WS	1.3/4	170.00	F134WL	1.3/4	260.00
F178WS	1.7/8	200.00	F178WL	1.7/8	300.00
F2WS	2	220.00	F2WL	2	320.00
F218WS	2.1/8	237.60	F218WL	2.1/8	345.60
F214WS	2.1/4	237.60	F214WL	2.1/4	345.60
F238WS	2.3/8	237.60	F238WL	2.3/8	351.00
F212WS	2.1/2	250.00	F212WL	2.1/2	360.00
F258WS	2.5/8	367.20	F258WL	2.5/8	375.00
F234WS	2.3/4	375.00	F234WL	2.3/4	398.00
F278WS	2.7/8	385.00	F278WL	2.7/8	405.00
F3WS	3	395.00	F3WL	3	420.00

1.1/2" SQ. DR. IMPACT SOCKET 6 POINT HEXAGON - WHITWORTH

STANDARD			LONG		
Part No.	Size mm	Price £	Part No.	Size mm	Price £
G34WS	3/4	94.50	G34WL	3/4	226.80
G1316WS	13/16	94.50	G1316WL	13/16	226.80
G78WS	7/8	94.50	G78WL	7/8	226.80
G1516WS	15/16	118.80	G1516WL	15/16	226.80
G1WS	1	118.80	G1WL	1	226.80
G116WS	1.1/16	118.80	G116WL	1.1/16	226.80
G118WS	1.1/8	118.80	G118WL	1.1/8	226.80
G114WS	1.1/4	129.60	G114WL	1.1/4	226.80
G138WS	1.3/8	129.60	G138WL	1.3/8	226.80
G112WS	1.1/2	178.20	G112WL	1.1/2	297.00
G158WS	1.5/8	178.20	G158WL	1.5/8	313.20
G134WS	1.3/4	183.60	G134WL	1.3/4	340.20
G178WS	1.7/8	280.80	G178WL	1.7/8	475.20
G2WS	2	324.00	G2WL	2	520.00
G218WS	2.1/8	340.00	G218WL	2.1/8	540.00
G214WS	2.1/4	355.00	G214WL	2.1/4	560.00
G238WS	2.3/8	413.64	G238WL	2.3/8	590.00
G212WS	2.1/2	453.60	G212WL	2.1/2	599.80
G258WS	2.5/8	475.20	G258WL	2.5/8	625.00
G234WS	2.3/4	507.60	G234WL	2.3/4	669.00
G278WS	2.7/8	523.80	G278WL	2.7/8	699.00
G3WS	3	572.40	G3WL	3	720.00
G314WS	3.1/4	685.80	G314WL	3.1/4	961.20
G312WS	3.1/2	858.60	G312WL	3.1/2	1,042.20
G334WS	3.3/4	896.40	G334WL	3.3/4	1,447.20
G4WS	4	1,123.20	G4WL	4	1,603.80





1/2" SQ. DR. IMPACT SOCKET 12 POINT BI-HEXAGON

METRIC - MM STANDARD			METRIC - MM LONG		
Part No.	Size mm	Price £	Part No.	Size mm	Price £
BHC8S	8	11.88	BHC8L	8	23.22
BHC9S	9	11.88	BHC9L	9	23.22
BHC10S	10	11.88	BHC10L	10	23.22
BHC11S	11	11.88	BHC11L	11	23.22
BHC12S	12	11.88	BHC12L	12	23.22
BHC13S	13	11.88	BHC13L	13	23.22
BHC14S	14	11.88	BHC14L	14	23.22
BHC15S	15	11.88	BHC15L	15	23.22
BHC16S	16	11.88	BHC16L	16	23.22
BHC17S	17	11.88	BHC17L	17	23.22
BHC18S	18	11.88	BHC18L	18	23.22
BHC19S	19	11.88	BHC19L	19	23.22
BHC20S	20	11.88	BHC20L	20	23.22
BHC21S	21	14.58	BHC21L	21	25.92
BHC22S	22	14.58	BHC22L	22	25.92
BHC23S	23	14.58	BHC23L	23	25.92
BHC24S	24	15.66	BHC24L	24	27.00
BHC25S	25	15.66	BHC25L	25	27.00
BHC26S	26	15.66	BHC26L	26	27.00
BHC27S	27	17.28	BHC27L	27	27.00
BHC28S	28	17.28	BHC28L	28	27.00
BHC29S	29	17.28	BHC29L	29	29.16
BHC30S	30	18.36	BHC30L	30	29.16
BHC32S	32	18.36	BHC32L	32	32.40
BHC33S	33	19.44	BHC33L	33	32.40
BHC34S	34	21.60	BHC34L	34	34.56
BHC35S	35	21.60	BHC35L	35	35.64
BHC36S	36	21.60	BHC36L	36	35.64
BHC38S	38	43.20	BHC38L	38	64.80
BHC41S	41	48.60	BHC41L	41	81.00
BHC43S	43	54.00	BHC43L	43	81.00
BHC46S	46	54.00	BHC46L	46	81.00
BHC50S	50	59.40	BHC50L	50	91.80
BHC51S	51	59.94	BHC51L	51	91.80
BHC55S	55	59.94	BHC55L	55	97.20
BHC60S	60	70.20	BHC60L	60	102.60

1/2" SQ. DR. IMPACT SOCKET 12 POINT BI-HEXAGON

IMPERIAL - AF STANDARD			IMPERIAL - AF LONG		
Part No.	Size mm	Price £	Part No.	Size mm	Price £
BHC516AFS	5/16	11.88	BHC516AFL	5/16	23.76
BHC38AFS	3/8	11.88	BHC38AFL	3/8	23.76
BHC716AFS	7/16	11.88	BHC716AFL	7/16	23.76
BHC12AFS	1/2	11.88	BHC12AFL	1/2	23.76
BHC916AFS	9/16	11.88	BHC916AFL	9/16	23.76
BHC58AFS	5/8	11.88	BHC58AFL	5/8	23.76
BHC11A16AFS	11/16	11.88	BHC11A16AFL	11/16	23.76
BHC34AFS	3/4	11.88	BHC34AFL	3/4	23.76
BHC13A16AFS	13/16	14.58	BHC13A16AFL	13/16	29.16
BHC78AFS	7/8	14.58	BHC78AFL	7/8	29.16
BHC15A16FS	15/16	15.66	BHC15A16FL	15/16	27.00
BHC1AFS	1	15.66	BHC1AFL	1	31.32
BHC116AFS	1.1/16	17.28	BHC116AFL	1.1/16	31.32
BHC118AFS	1.1/8	17.28	BHC118AFL	1.1/8	34.56
BHC1316AFS	1.3/16	18.36	BHC1316AFL	1.3/16	34.56
BHC114AFS	1.1/4	18.36	BHC114AFL	1.1/4	32.40
BHC1516AFS	1.5/16	21.60	BHC1516AFL	1.5/16	43.20
BHC138AFS	1.3/8	21.60	BHC138AFL	1.3/8	35.64
BHC1716AFS	1.7/16	32.40	BHC1716AFL	1.7/16	64.80
BHC112AFS	1.1/2	43.20	BHC112AFL	1.1/2	64.80
BHC1916AFS	1.9/16	48.60	BHC1916AFL	1.9/16	72.90
BHC158AFS	1.5/8	48.60	BHC158AFL	1.5/8	72.90
BHC11116AFS	1.11/16	54.00	BHC11116AFL	1.11/16	81.00
BHC11316AFS	1.13/16	51.00	BHC11316AFL	1.13/16	81.00
BHC178AFS	1.7/8	64.80	BHC178AFL	1.7/8	91.80
BHC2AFS	2	70.20	BHC2AFL	2	91.80



Any items on this page can be ordered in Thinwall.



Impact Sockets - 3/4" Sq. Dr. - Bi-Hexagon

3/4" SQ. DR. IMPACT SOCKET - 12 POINT BI-HEXAGON

METRIC - MM STANDARD			METRIC - MM STANDARD			METRIC - MM LONG			METRIC - MM LONG		
Part No.	Size mm	Price £	Part No.	Size mm	Price £	Part No.	Size mm	Price £	Part No.	Size mm	Price £
BHE13S	13	18.36	BHE38S	38	29.16	BHE13L	13	32.40	BHE38L	38	38.88
BHE14S	14	18.36	BHE40S	40	30.24	BHE14L	14	32.40	BHE40L	40	41.04
BHE15S	15	18.36	BHE41S	41	30.24	BHE15L	15	32.40	BHE41L	41	43.20
BHE16S	16	18.36	BHE42S	42	30.40	BHE16L	16	32.40	BHE42L	42	48.60
BHE17S	17	18.36	BHE43S	43	32.40	BHE17L	17	32.40	BHE43L	43	48.60
BHE18S	18	18.36	BHE44S	44	36.72	BHE18L	18	32.40	BHE44L	44	55.08
BHE19S	19	18.36	BHE45S	45	37.80	BHE19L	19	32.40	BHE45L	45	56.16
BHE20S	20	18.36	BHE46S	46	38.88	BHE20L	20	32.40	BHE46L	46	56.70
BHE21S	21	18.36	BHE47S	47	41.04	BHE21L	21	32.40	BHE47L	47	61.56
BHE22S	22	18.36	BHE48S	48	41.04	BHE22L	22	32.40	BHE48L	48	61.56
BHE23S	23	18.36	BHE49S	49	41.04	BHE23L	23	32.40	BHE49L	49	61.56
BHE24S	24	18.36	BHE50S	50	41.04	BHE24L	24	32.40	BHE50L	50	61.56
BHE25S	25	18.36	BHE52S	52	45.36	BHE25L	25	32.40	BHE52L	52	74.52
BHE26S	26	18.36	BHE54S	54	51.84	BHE26L	26	32.40	BHE54L	54	76.14
BHE27S	27	18.36	BHE55S	55	51.84	BHE27L	27	32.40	BHE55L	55	86.40
BHE28S	28	18.36	BHE56S	56	54.00	BHE28L	28	32.40	BHE56L	56	91.80
BHE29S	29	18.36	BHE60S	60	59.40	BHE29L	29	32.40	BHE60L	60	119.88
BHE30S	30	20.52	BHE65S	65	66.96	BHE30L	30	32.40	BHE65L	65	153.36
BHE32S	32	23.76	BHE70S	70	86.40	BHE31L	31	34.56	BHE70L	70	178.20
BHE33S	33	23.76	BHE75S	75	135.00	BHE32L	32	34.56	BHE75L	75	201.96
BHE34S	34	23.76	BHE80S	80	135.00	BHE33L	33	35.64	BHE80L	80	226.80
BHE35S	35	29.16	BHE85S	85	151.20	BHE34L	34	35.64	BHE85L	85	250.56
BHE36S	36	29.16	BHE90S	90	167.40	BHE35L	35	35.64	BHE90L	90	270.00
						BHE36L	36	36.72			

Any items on this page can be ordered in Thinwall.





3/4" SQ. DR. IMPACT SOCKET - 12 POINT BI-HEXAGON



IMPERIAL - AF STANDARD

Part No.	Size mm	Price £
BHE716AFS	7/16	18.36
BHE12AFS	1/2	18.36
BHE916AFS	9/16	18.36
BHE58AFS	5/8	18.36
BHE11A16AFS	11/16	18.36
BHE34AFS	3/4	18.36
BHE13A16AFS	13/16	18.36
BHE78AFS	7/8	18.36
BHE15A16FS	15/16	18.36
BHE1AFS	1	18.36
BHE116AFS	1.1/16	18.36
BHE118AFS	1.1/8	18.36
BHE1316AFS	1.3/16	20.52
BHE114AFS	1.1/4	23.76
BHE1516AFS	1.5/16	23.76
BHE138AFS	1.3/8	29.16
BHE1716AFS	1.7/16	29.16
BHE112AFS	1.1/2	29.16
BHE1916AFS	1.9/16	29.16
BHE158AFS	1.5/8	30.24
BHE1116AFS	1.11/16	32.40
BHE134AFS	1.3/4	37.80
BHE11316AFS	1.13/16	37.80
BHE178AFS	1.7/8	41.04
BHE2AFS	2	45.36
BHE2116AFS	2.1/16	50.76
BHE218AFS	2.1/8	50.76
BHE2316AFS	2.3/16	50.76
BHE214AFS	2.1/4	54.00
BHE2516AFS	2.5/16	56.16
BHE238AFS	2.3/8	59.40
BHE2716AFS	2.7/16	73.44
BHE212AFS	2.1/2	82.08
BHE2916AFS	2.9/16	66.96
BHE258AFS	2.5/8	92.88
BHE2116AFS	2.11/16	116.64
BHE234AFS	2.3/4	130.00

IMPERIAL - AF LONG

Part No.	Size mm	Price £
BHE716AFL	7/16	32.40
BHE12AFL	1/2	32.40
BHE916AFL	9/16	32.40
BHE58AFL	5/8	32.40
BHE11A16AFL	11/16	32.40
BHE34AFL	3/4	32.40
BHE13A16AFL	13/16	32.40
BHE78AFL	7/8	32.40
BHE15A16FL	15/16	32.40
BHE1AFL	1	32.40
BHE116AFL	1.1/16	32.40
BHE118AFL	1.1/8	32.40
BHE1316AFL	1.3/16	32.40
BHE114AFL	1.1/4	34.56
BHE1516AFL	1.5/16	35.64
BHE138AFL	1.3/8	35.64
BHE1716AFL	1.7/16	43.74
BHE112AFL	1.1/2	43.74
BHE1916AFL	1.9/16	43.74
BHE158AFL	1.5/8	43.74
BHE1116AFL	1.11/16	48.60
BHE134AFL	1.3/4	56.70
BHE11316AFL	1.13/16	56.70
BHE178AFL	1.7/8	61.56
BHE2AFL	2	76.14
BHE2116AFL	2.1/16	76.14
BHE218AFL	2.1/8	76.14
BHE2316AFL	2.3/16	86.40
BHE214AFL	2.1/4	91.80
BHE2516AFL	2.5/16	97.20
BHE238AFL	2.3/8	108.00
BHE2716AFL	2.7/16	113.40
BHE212AFL	2.1/2	124.20
BHE2916AFL	2.9/16	153.56
BHE258AFL	2.5/8	168.00
BHE2116AFL	2.11/16	172.00
BHE234AFL	2.3/4	178.20

Any items on this page can be ordered in Thinwall.



Impact Sockets - 1" Sq. Dr. - Bi-Hexagon

1" SQ. DR. IMPACT SOCKET - 12 POINT BI-HEXAGON - METRIC MM

METRIC - MM STANDARD			METRIC - MM STANDARD			METRIC - MM LONG			METRIC - MM LONG		
Part No.	Size mm	Price £	Part No.	Size mm	Price £	Part No.	Size mm	Price £	Part No.	Size mm	Price £
BHF16S	16	37.80	BHF44S	44	58.21	BHF16L	16	56.70	BHF44L	44	87.31
BHF17S	17	37.80	BHF45S	45	60.26	BHF17L	17	56.70	BHF45L	45	90.39
BHF18S	18	37.80	BHF46S	46	62.32	BHF18L	18	56.70	BHF46L	46	93.47
BHF19S	19	37.80	BHF47S	47	64.58	BHF19L	19	56.70	BHF47L	47	96.87
BHF20S	20	37.80	BHF48S	48	66.74	BHF20L	20	56.70	BHF48L	48	100.11
BHF21S	21	37.80	BHF50S	50	71.50	BHF21L	21	56.70	BHF50L	50	107.24
BHF22S	22	37.80	BHF52S	52	76.68	BHF22L	22	56.70	BHF52L	52	115.02
BHF23S	23	37.80	BHF54S	54	82.08	BHF23L	23	56.70	BHF54L	54	123.12
BHF24S	24	37.80	BHF55S	55	85.00	BHF24L	24	56.70	BHF55L	55	127.49
BHF25S	25	37.80	BHF56S	56	88.02	BHF25L	25	56.70	BHF56L	56	127.49
BHF26S	26	37.80	BHF60S	60	108.75	BHF26L	26	56.70	BHF60L	60	151.47
BHF27S	27	37.80	BHF65S	65	108.75	BHF27L	27	56.70	BHF65L	65	163.13
BHF28S	28	37.80	BHF70S	70	117.18	BHF28L	28	56.70	BHF70L	70	175.77
BHF29S	29	37.80	BHF75S	75	125.25	BHF29L	29	56.70	BHF75L	75	189.37
BHF30S	30	37.80	BHF80S	80	140.40	BHF30L	30	56.70	BHF80L	80	220.32
BHF31S	31	37.80	BHF85S	85	146.88	BHF31L	31	56.70	BHF85L	85	220.32
BHF32S	32	37.80	BHF90S	90	237.60	BHF32L	32	56.70	BHF90L	90	267.30
BHF33S	33	37.80	BHF95S	95	302.40	BHF33L	33	56.70	BHF95L	95	325.62
BHF34S	34	39.31	BHF100S	100	324.00	BHF34L	34	58.97	BHF100L	100	396.90
BHF35S	35	40.82	BHF105S	105	345.60	BHF35L	35	61.24	BHF105L	105	502.20
BHF36S	36	42.55	BHF110S	110	405.00	BHF36L	36	63.83	BHF110L	110	607.50
BHF37S	37	44.17	BHF115S	115	492.48	BHF37L	37	66.25	BHF115L	115	738.72
BHF38S	38	46.00	BHF120S	120	594.00	BHF38L	38	69.01	BHF120L	120	777.60
BHF40S	40	49.68	BHF125S	125	621.00	BHF40L	40	74.52	BHF125L	125	788.40
BHF41S	41	51.73	BHF130S	130	664.20	BHF41L	41	77.60	BHF130L	130	804.60
BHF42S	42	53.78	BHF135S	135	696.60	BHF42L	42	80.68	BHF135L	135	839.16
BHF43S	43	55.94	BHF140S	140	729.00	BHF43L	43	83.92	BHF140L	140	858.60



Any items on this page can be ordered in Thinwall.



1" SQ. DR. IMPACT SOCKET - 12 POINT BI-HEXAGON - IMPERIAL AF

IMPERIAL - AF STANDARD			IMPERIAL - AF STANDARD			IMPERIAL - AF LONG			IMPERIAL - AF LONG		
Part No.	Size mm	Price £	Part No.	Size mm	Price £	Part No.	Size mm	Price £	Part No.	Size mm	Price £
BHF58AFS	5/8	37.80	BHF212AFS	2.1/2	108.75	BHF58AFL	5/8	56.70	BHF212AFL	2.1/2	163.13
BHF11A16FL	11/16	37.80	BHF2916AFS	2.9/16	108.75	BHF11A16FL	11/16	56.70	BHF2916AFL	2.9/16	163.13
BHF34AFS	3/4	37.80	BHF258AFS	2.5/8	114.48	BHF34AFL	3/4	56.70	BHF258AFL	2.5/8	171.72
BHF13A16FL	13/16	37.80	BHF21116AFS	2.11/16	116.64	BHF13A16FL	13/16	56.70	BHF21116AFL	2.11/16	174.96
BHF78AFS	7/8	37.80	BHF234AFS	2.3/4	117.18	BHF78AFL	7/8	56.70	BHF234AFL	2.3/4	175.77
BHF15A16FS	15/16	37.80	BHF21316AFS	2.13/16	120.96	BHF15A16FL	15/16	56.70	BHF21316AFL	2.13/16	183.60
BHF1AFS	1	37.80	BHF278AFS	2.7/8	124.20	BHF1AFL	1	56.70	BHF278AFL	2.7/8	194.40
BHF1116AFS	1.1/16	37.80	BHF21516AFS	2.15/16	129.60	BHF1116AFL	1.1/16	56.70	BHF21516AFL	2.15/16	205.20
BHF118AFS	1.1/8	37.80	BHF3AFS	3	136.08	BHF118AFL	1.1/8	56.70	BHF3AFL	3	216.00
BHF1316AFS	1.3/16	37.80	BHF3116AFS	3.1/16	136.08	BHF1316AFL	1.3/16	56.70	BHF3116AFL	3.1/16	216.00
BHF114AFS	1.1/4	37.80	BHF318AFS	3.1/8	140.40	BHF114AFL	1.1/4	56.70	BHF318AFL	3.1/8	220.32
BHF1516AFS	1.5/16	39.31	BHF3316AFS	3.3/16	140.40	BHF1516AFL	1.5/16	58.97	BHF3316AFL	3.3/16	243.00
BHF138AFS	1.3/8	40.82	BHF314AFS	3.1/4	144.72	BHF138AFL	1.3/8	61.24	BHF314AFL	3.1/4	248.40
BHF1716AFS	1.7/16	44.17	BHF3516AFS	3.5/16	146.88	BHF1716AFL	1.7/16	66.26	BHF3516AFL	3.5/16	253.80
BHF112AFS	1.1/2	46.00	BHF338AFS	3.3/8	167.40	BHF112AFL	1.1/2	69.01	BHF338AFL	3.3/8	270.00
BHF1916AFS	1.9/16	49.68	BHF3716AFS	3.7/16	172.80	BHF1916AFL	1.9/16	74.52	BHF3716AFL	3.7/16	280.80
BHF158AFS	1.5/8	51.73	BHF312AFS	3.1/2	237.60	BHF158AFL	1.5/8	77.60	BHF312AFL	3.1/2	324.00
BHF11116AFS	1.11/16	55.94	BHF3916AFS	3.9/16	248.40	BHF11116AFL	1.11/16	83.92	BHF3916AFL	3.9/16	345.60
BHF134AFS	1.3/4	60.26	BHF358AFS	3.5/8	264.60	BHF134AFL	1.3/4	90.40	BHF358AFL	3.5/8	367.20
BHF11316AFS	1.13/16	62.32	BHF31116AFS	3.11/16	280.80	BHF11316AFL	1.13/16	93.47	BHF31116AFL	3.11/16	388.80
BHF178AFS	1.7/8	66.74	BHF334AFS	3.3/4	302.40	BHF178AFL	1.7/8	100.12	BHF334AFL	3.3/4	410.40
BHF11516AFS	1.15/16	71.50	BHF31316AFS	3.13/16	313.20	BHF11516AFL	1.15/16	107.24	BHF31316AFL	3.13/16	410.40
BHF2AFS	2	74.09	BHF378AFS	3.7/8	324.00	BHF2AFL	2	111.13	BHF378AFL	3.7/8	486.00
BHF2116AFS	2.1/16	79.38	BHF31516AFS	3.15/16	334.80	BHF2116AFL	2.1/16	119.07	BHF31516AFL	3.15/16	486.54
BHF218AFS	2.1/8	82.08	BHF4AFS	4	351.00	BHF218AFL	2.1/8	123.12	BHF4AFL	4	497.34
BHF2116AFS	2.3/16	88.02	BHF4116AFS	4.1/16	367.20	BHF2316AFL	2.3/16	132.03	BHF4116AFL	4.1/16	502.20
BHF214AFS	2.1/4	94.18	BHF418AFS	4.1/8	388.80	BHF214AFL	2.1/4	141.26	BHF418AFL	4.1/8	583.20
BHF2516AFS	2.5/16	100.98	BHF4316AFS	4.3/16	426.60	BHF2516AFL	2.5/16	151.47	BHF4316AFL	4.3/16	639.90
BHF238AFS	2.3/8	108.75	BHF414AFS	4.1/4	492.48	BHF238AFL	2.3/8	151.47	BHF414AFL	4.1/4	738.72
BHF2716AFS	2.7/16	108.75				BHF2716AFL	2.7/16	156.01			

Any items on this page can be ordered in Thinwall.



Impact Sockets - 1.1/2" Sq. Dr. - Bi-Hexagon

1.1/2" SQ. DR. IMPACT SOCKET - 12 POINT BI-HEXAGON

METRIC - MM STANDARD		
Part No.	Size mm	Price £
BHG30S	30	199.80
BHG32S	32	199.80
BHG33S	33	199.80
BHG34S	34	199.80
BHG35S	35	199.80
BHG36S	36	199.80
BHG38S	38	199.80
BHG41S	41	199.80
BHG42S	42	199.80
BHG43S	43	199.80
BHG44S	44	199.80
BHG45S	45	199.80
BHG46S	46	199.80
BHG47S	47	199.80
BHG48S	48	199.80
BHG50S	50	199.80
BHG51S	51	199.80
BHG52S	52	199.80
BHG53S	53	199.80
BHG54S	54	199.80
BHG55S	55	199.80

METRIC - MM STANDARD		
Part No.	Size mm	Price £
BHG56S	56	199.80
BHG60S	60	226.80
BHG65S	65	237.60
BHG70S	70	288.36
BHG75S	75	288.36
BHG76S	76	309.36
BHG80S	80	309.36
BHG85S	85	334.80
BHG90S	90	363.96
BHG95S	95	421.40
BHG100S	100	421.40
BHG105S	105	459.00
BHG110S	110	493.56
BHG115S	115	532.44
BHG120S	120	575.64
BHG125S	125	618.84
BHG130S	130	646.92
BHG135S	135	669.60
BHG140S	140	696.60
BHG145S	145	723.60
BHG150S	150	750.60

METRIC - MM LONG		
Part No.	Size mm	Price £
BHG30L	30	279.72
BHG32L	32	279.72
BHG33L	33	279.72
BHG34L	34	279.72
BHG35L	35	279.72
BHG36L	36	279.72
BHG38L	38	279.72
BHG40L	40	279.72
BHG41L	41	279.72
BHG42L	42	279.72
BHG43L	43	279.72
BHG44L	44	279.72
BHG45L	45	279.72
BHG46L	46	279.72
BHG47L	47	279.72
BHG48L	48	279.72
BHG49L	49	279.72
BHG50L	50	279.72
BHG51L	51	279.72
BHG52L	52	279.72
BHG53L	53	279.72
BHG54L	54	279.72

METRIC - MM LONG		
Part No.	Size mm	Price £
BHG55L	55	279.72
BHG56L	56	279.72
BHG60L	60	319.25
BHG65L	65	354.24
BHG70L	70	367.42
BHG75L	75	403.70
BHG76L	76	433.94
BHG80L	80	433.94
BHG85L	85	468.72
BHG90L	90	509.54
BHG95L	95	589.68
BHG100L	100	589.68
BHG105L	105	668.84
BHG110L	110	690.98
BHG115L	115	745.42
BHG120L	120	805.90
BHG125L	125	866.38
BHG130L	130	905.69
BHG135L	135	937.44
BHG140L	140	975.24
BHG145L	145	1,013.04
BHG150L	150	1,050.84



Any items on this page can be ordered in Thinwall.



1.1/2" SQ. DR. IMPACT SOCKET - 12 POINT BI-HEXAGON

IMPERIAL - AF STANDARD			IMPERIAL - AF STANDARD			IMPERIAL - AF LONG			IMPERIAL - AF LONG		
Part No.	Size mm	Price £	Part No.	Size mm	Price £	Part No.	Size mm	Price £	Part No.	Size mm	Price £
BHG118AFS	1.1/8	199.80	BHG314AFS	3.1/4	329.40	BHG118AFL	1.1/8	279.72	BHG314AFL	3.1/4	446.04
BHG1316AFS	1.3/16	199.80	BHG3516AFS	3.5/16	329.40	BHG1316AFL	1.3/16	279.72	BHG3516AFL	3.5/16	461.16
BHG114AFS	1.1/4	199.80	BHG338AFS	3.3/8	334.80	BHG114AFL	1.1/4	279.72	BHG338AFL	3.3/8	468.72
BHG138AFS	1.3/8	199.80	BHG3716AFS	3.7/16	351.00	BHG138AFL	1.3/8	279.72	BHG3716AFL	3.7/16	491.40
BHG1716AFS	1.7/16	199.80	BHG312AFS	3.1/2	363.96	BHG1716AFL	1.7/16	279.72	BHG312AFL	3.1/2	509.54
BHG112AFS	1.1/2	199.80	BHG3916AFS	3.9/16	372.60	BHG112AFL	1.1/2	279.72	BHG3916AFL	3.9/16	521.64
BHG1916AFS	1.9/16	199.80	BHG358AFS	3.5/8	388.80	BHG1916AFL	1.9/16	279.72	BHG358AFL	3.5/8	544.32
BHG158AFS	1.5/8	199.80	BHG31116AFS	3.11/16	405.00	BHG158AFL	1.5/8	279.72	BHG31116AFL	3.11/16	567.00
BHG11116AFS	1.11/16	199.80	BHG334AFS	3.3/4	421.20	BHG11116AFL	1.11/16	279.72	BHG334AFL	3.3/4	589.68
BHG134AFS	1.3/4	199.80	BHG31316AFS	3.13/16	421.20	BHG134AFL	1.3/4	279.72	BHG31316AFL	3.13/16	589.68
BHG11316AFS	1.13/16	199.80	BHG378AFS	3.7/8	421.20	BHG11316AFL	1.13/16	279.72	BHG378AFL	3.7/8	589.68
BHG178AFS	1.7/8	199.80	BHG31516AFS	3.15/16	421.20	BHG178AFL	1.7/8	279.72	BHG31516AFL	3.15/16	589.68
BHG11516AFS	1.15/16	199.80	BHG4AFS	4	448.20	BHG11516AFL	1.15/16	279.72	BHG4AFL	4	627.48
BHG2AFS	2	199.80	BHG4116AFS	4.1/16	469.80	BHG2AFL	2	279.72	BHG4116AFL	4.1/16	657.72
BHG2116AFS	2.1/16	199.80	BHG418AFS	4.1/8	459.00	BHG2116AFL	2.1/16	279.72	BHG418AFL	4.1/8	668.84
BHG218AFS	2.1/8	199.80	BHG4316AFS	4.3/16	493.56	BHG218AFL	2.1/8	279.72	BHG4316AFL	4.3/16	690.98
BHG2316AFS	2.3/16	199.80	BHG414AFS	4.1/4	493.56	BHG2316AFL	2.3/16	279.72	BHG414AFL	4.1/4	690.98
BHG214AFS	2.1/4	220.32	BHG4516AFS	4.5/16	493.56	BHG214AFL	2.1/4	307.80	BHG4516AFL	4.5/16	690.98
BHG2516AFS	2.5/16	220.32	BHG438AFS	4.3/8	493.56	BHG2516AFL	2.5/16	308.45	BHG438AFL	4.3/8	690.98
BHG238AFS	2.3/8	226.80	BHG4716AFS	4.7/16	518.40	BHG238AFL	2.3/8	319.25	BHG4716AFL	4.7/16	725.75
BHG2716AFS	2.7/16	237.60	BHG412AFS	4.1/2	532.44	BHG2716AFL	2.7/16	332.64	BHG412AFL	4.1/2	745.41
BHG212AFS	2.1/2	237.60	BHG458AFS	4.5/8	561.60	BHG212AFL	2.1/2	332.64	BHG458AFL	4.5/8	786.24
BHG2916AFS	2.9/16	237.60	BHG434AFS	4.3/4	575.64	BHG2916AFL	2.9/16	354.24	BHG434AFL	4.3/4	805.89
BHG258AFS	2.5/8	259.20	BHG478AFS	4.7/8	594.00	BHG258AFL	2.5/8	362.88	BHG478AFL	4.7/8	831.60
BHG21116AFS	2.11/16	288.36	BHG5AFS	5	626.40	BHG21116AFL	2.11/16	403.70	BHG5AFL	5	876.96
BHG234AFS	2.3/4	288.36	BHG518AFS	5.1/8	646.92	BHG234AFL	2.3/4	367.41	BHG518AFL	5.1/8	905.68
BHG21316AFS	2.13/16	288.36	BHG514AFS	5.1/4	664.20	BHG21316AFL	2.13/16	403.70	BHG514AFL	5.1/4	929.88
BHG278AFS	2.7/8	288.36	BHG538AFS	5.3/8	679.32	BHG278AFL	2.7/8	403.70	BHG538AFL	5.3/8	951.04
BHG21516AFS	2.15/16	288.36	BHG512AFS	5.1/2	696.60	BHG21516AFL	2.15/16	403.70	BHG512AFL	5.1/2	975.24
BHG3AFS	3	309.96	BHG558AFS	5.5/8	734.40	BHG3AFL	3	433.94	BHG558AFL	5.5/8	1,028.16
BHG3116AFS	3.1/16	309.96	BHG534AFS	5.3/4	745.20	BHG3116AFL	3.1/16	433.94	BHG534AFL	5.3/4	1,043.28
BHG318AFS	3.1/8	309.96	BHG578AFS	5.7/8	750.60	BHG318AFL	3.1/8	433.94	BHG578AFL	5.7/8	1,050.84
BHG3316AFS	3.3/16	313.20	BHG6AFS	6	799.20	BHG3316AFL	3.3/16	438.48	BHG6AFL	6	1,118.88

Any items on this page can be ordered in Thinwall.



Impact Sockets - 2.1/2" Sq. Dr. - Bi-Hexagon

2.1/2" SQ. DR. IMPACT SOCKET - 12 POINT BI-HEXAGON

METRIC - MM STANDARD			METRIC - MM STANDARD		
Part No.	Size mm	Price £	Part No.	Size mm	Price £
BH43S	43	586.43	BH140S	140	1,082.00
BH45S	45	586.43	BH145S	145	1,159.00
BH46S	46	586.43	BH150S	150	1,360.00
BH52S	52	586.43	BH155S	155	1,547.00
BH54S	54	679.43	BH160S	160	1,857.00
BH55S	55	679.42	BH165S	165	1,919.00
BH56S	56	679.42	BH170S	170	1,919.00
BH58S	58	679.42	BH175S	175	2,136.00
BH60S	60	679.43	BH180S	180	2,213.00
BH65S	65	679.42	BH185S	185	2,213.00
BH70S	70	679.42	BH190S	190	2,769.00
BH75S	75	679.42	BH195S	195	2,858.00
BH80S	80	679.43	BH200S	200	3,042.00
BH85S	85	679.42	BH205S	205	3,303.00
BH90S	90	701.12	BH210S	210	3,533.00
BH95S	95	710.45	BH215S	215	3,560.00
BH100S	100	725.91	BH220S	220	4,491.00
BH105S	105	725.91	BH225S	225	4,494.00
BH110S	110	756.91	BH230S	230	4,825.00
BH115S	115	756.91	BH235S	235	5,068.00
BH120S	120	818.90	BH240S	240	5,226.00
BH125S	125	818.90	BH245S	245	5,384.00
BH130S	130	927.39	BH250S	250	4,102.00
BH135	135	1,004.88	BH255S	255	6,799.00

IMPERIAL - AF STANDARD			IMPERIAL - AF STANDARD		
Part No.	Size mm	Price £	Part No.	Size mm	Price £
BH178AFS	1.7/8	586.43	BH3916AFS	3.9/16	679.42
BH2AFS	2	586.43	BH358AFS	3.5/8	679.42
BH218AFS	2.1/8	586.43	BH3116AFS	3.11/16	679.42
BH2316AFS	2.3/16	586.43	BH334AFS	3.3/4	710.45
BH214AFS	2.1/4	586.43	BH31316AFS	3.3/4	710.45
BH2516AFS	2.5/16	586.43	BH378AFS	3.7/8	725.91
BH238AFS	2.3/8	679.42	BH31516AFS	3.15/16	725.91
BH2716AFS	2.7/16	679.42	BH4AFS	4	725.91
BH212AFS	2.1/2	679.42	BH418AFS	4.1/8	725.91
BH2916AFS	2.9/16	679.42	BH414AFS	4.1/4	756.91
BH258AFS	2.5/8	679.42	BH438AFS	4.3/8	756.91
BH2116AFS	2.11/16	679.42	BH412AFS	4.1/2	818.90
BH70S	2.3/4	679.42	BH458AFS	4.5/8	818.90
BH21316AFS	2.13/16	679.42	BH434AFS	4.3/4	818.90
BH278AFS	2.7/8	679.42	BH478AFS	4.7/8	818.90
BH3AFS	3	679.42	BH5AFS	5	927.83
BH3116AFS	3.1/16	679.42	BH518AFS	5.1/8	927.83
BH318AFS	3.1/8	679.42	BH514AFS	5.1/4	927.83
BH3316AFS	3.3/16	679.42	BH538AFS	5.3/8	995.00
BH314AFS	3.1/4	679.42	BH512AFS	5.1/2	1,082.00
BH3516AFS	3.5/16	679.42	BH558AFS	5.5/8	1,159.00
BH338AFS	3.3/8	679.42	BH534AFS	5.3/4	1,360.00
BH3716AFS	3.7/16	679.42	BH578AFS	5.7/8	1,360.00
BH312AFS	3.1/2	679.42	BH6AFS	6	1,547.00

Any items on this page can be ordered in Thinwall.



1/2" SQ. DR. IMPACT SOCKET - 4 POINT SQUARE

METRIC - MM STANDARD

Part No.	Size mm	Price £
SQC8S	8	44.06
SQC9S	9	44.06
SQC10S	10	44.06
SQC11S	11	44.06
SQC12S	12	44.06
SQC13S	13	44.06
SQC14S	14	44.06
SQC15S	15	44.06
SQC16S	16	44.06
SQC17S	17	44.06
SQC18S	18	44.06
SQC19S	19	47.95
SQC20S	20	47.95
SQC21S	21	49.25
SQC22S	22	49.25
SQC23S	23	57.02
SQC24S	24	57.02
SQC25S	25	62.21
SQC26S	26	62.21
SQC27S	27	69.98
SQC28S	28	69.98
SQC29S	29	75.17
SQC30S	30	77.76
SQC32S	32	82.94
SQC33S	35	82.94
SQC34S	36	82.94
SQC35S	38	85.54
SQC41S	41	85.54

METRIC - MM LONG

Part No.	Size mm	Price £
SQC8L	8	51.84
SQC9L	9	51.84
SQC10L	10	51.84
SQC11L	11	51.84
SQC12L	12	51.84
SQC13L	13	51.84
SQC14L	14	51.84
SQC15L	15	51.84
SQC16L	16	51.84
SQC17L	17	51.84
SQC18L	18	51.84
SQC19L	19	69.12
SQC20L	20	69.12
SQC21L	21	69.12
SQC22L	22	69.12
SQC23L	23	69.12
SQC24L	24	69.12
SQC25L	25	69.12
SQC26L	26	73.44
SQC27L	27	79.92
SQC28L	28	87.48
SQC29L	29	87.48
SQC30L	30	87.48
SQC32L	32	93.74
SQC33L	35	93.74
SQC34L	36	96.34
SQC35L	38	101.52
SQC41L	41	103.68

IMPERIAL - AF STANDARD

Part No.	Size mm	Price £
SQC516AFS	5/16	44.06
SQC38AFS	3/8	44.06
SQC716AFS	7/16	44.06
SQC12AFS	1/2	44.06
SQC916AFS	9/16	44.06
SQC58AFS	5/8	44.06
SQC11A16AFS	11/16	44.06
SQC34AFS	3/4	47.95
SQC13A16AFS	13/16	49.25
SQC78AFS	7/8	49.25
SQC1516AFS	15/16	57.02
SQC1AFS	1	57.02
SQC1116AFS	1.1/16	69.98
SQC118AFS	1.1/8	69.98
SQC1316AFS	1.3/16	77.76
SQC114AFS	1.1/4	82.94
SQC1516AFS	1.5/16	82.94
SQC138AFS	1.3/8	82.94
SQC1716AFS	1.7/16	84.24
SQC112AFS	1.1/2	85.54
SQC158AFS	1.5/8	85.54

IMPERIAL - AF LONG

Part No.	Size mm	Price £
SQC516AFL	5/16	51.84
SQC38AFL	3/8	51.84
SQC716AFL	7/16	69.12
SQC12AFL	1/2	69.12
SQC916AFL	9/16	69.12
SQC58AFL	5/8	69.12
SQC11A16AFL	11/16	69.12
SQC34AFL	3/4	69.12
SQC13A16AFL	13/16	69.12
SQC78AFL	7/8	69.12
SQC1516AFL	15/16	69.12
SQC1AFL	1	69.12
SQC1116AFL	1.1/16	79.92
SQC118AFL	1.1/8	87.48
SQC1316AFL	1.3/16	87.48
SQC114AFL	1.1/4	93.74
SQC1516AFL	1.5/16	93.74
SQC138AFL	1.3/8	93.74
SQC1716AFL	1.7/16	96.36
SQC112AFL	1.1/2	101.52
SQC158AFL	1.5/8	103.68



Any items on this page can be ordered in Thinwall.

3/4" SQ. DR. IMPACT SOCKET - 4 POINT SQUARE

METRIC - MM STANDARD			METRIC - MM LONG		
Part No.	Size mm	Price £	Part No.	Size mm	Price £
SQE13S	13	51.84	SQE13L	13	69.98
SQE14S	14	51.84	SQE14L	14	69.98
SQE15S	15	55.73	SQE15L	15	69.98
SQE16S	16	55.73	SQE16L	16	69.98
SQE17S	17	55.73	SQE17L	17	69.98
SQE18S	18	55.73	SQE18L	18	73.08
SQE19S	19	55.73	SQE19L	19	73.08
SQE20S	20	55.73	SQE20L	20	77.76
SQE21S	21	55.73	SQE21L	21	77.76
SQE22S	22	58.32	SQE22L	22	93.31
SQE23S	23	64.60	SQE23L	23	93.31
SQE24S	24	64.80	SQE24L	24	87.48
SQE25S	25	68.69	SQE25L	25	103.68
SQE26S	26	68.69	SQE26L	26	103.68
SQE27S	27	68.69	SQE27L	27	103.68
SQE28S	28	77.76	SQE28L	28	103.68
SQE30S	30	77.76	SQE30L	30	106.27
SQE32S	32	82.94	SQE31L	32	106.27
SQE33S	33	90.72	SQE32L	33	116.64
SQE34S	34	90.72	SQE33L	34	116.64
SQE35S	35	90.72	SQE34L	35	116.64
SQE36S	36	90.72	SQE35L	36	116.64
SQE38S	38	99.79	SQE36L	38	129.60
SQE40S	40	99.79	SQE37L	40	138.85
SQE41S	41	103.68	SQE38L	41	142.56
SQE42S	42	110.16	SQE40L	42	149.04
SQE43S	43	110.16	SQE41L	43	149.04
SQE45S	45	110.16	SQE42L	45	149.04
SQE46S	46	110.16	SQE43L	46	149.04
SQE50S	50	116.64	SQE44L	50	149.04

IMPERIAL - AF STANDARD			IMPERIAL - AF LONG		
Part No.	Size mm	Price £	Part No.	Size mm	Price £
SQE12AFS	1/2	51.84	SQE12AFL	1/2	69.98
SQE916AFS	9/16	55.73	SQE916AFL	9/16	69.98
SQE58AFS	5/8	55.73	SQE58AFL	5/8	69.98
SQE1116AFS	11/16	55.73	SQE11A16FL	11/16	69.98
SQE34AFS	3/4	55.73	SQE34AFL	3/4	73.08
SQE1316AFS	13/16	55.73	SQE1316AFL	13/16	77.76
SQE78AFS	7/8	58.32	SQE78AFL	7/8	79.08
SQE15A16FS	15/16	64.80	SQE15A16FL	15/16	93.31
SQE1AFS	1	68.69	SQE1AFL	1	98.00
SQE1116AFS	1.1/16	68.69	SQE1116AFL	1.1/16	97.08
SQE118AFS	1.1/8	68.69	SQE118AFL	1.1/8	106.27
SQE1316AFS	1.3/16	77.76	SQE1316AFL	1.3/16	106.27
SQE114AFS	1.1/4	82.94	SQE114AFL	1.1/4	106.27
SQE1516AFS	1.5/16	90.72	SQE1516AFL	1.5/16	110.16
SQE138AFS	1.3/8	90.72	SQE138AFL	1.3/8	116.64
SQE1716AFS	1.7/16	90.72	SQE1716AFL	1.7/16	116.64
SQE112AFS	1.1/2	99.79	SQE112AFL	1.1/2	129.60
SQE1916AFS	1.9/16	99.79	SQE1916AFL	1.9/16	129.60
SQE158AFS	1.5/8	103.68	SQE158AFL	1.5/8	142.56
SQE11116AFS	1.11/16	110.16	SQE11116AFL	1.11/16	149.04
SQE134AFS	1.3/4	110.16	SQE134AFL	1.3/4	149.04
SQE11316AFS	1.13/16	110.16	SQE11316AFL	1.13/16	149.04
SQE178AFS	1.7/8	116.64	SQE178AFL	1.7/8	149.04
SQE2AFS	2	135.00	SQE2AFL	2	149.04



Any items on this page can be ordered in Thinwall.

1" SQ. DR. IMPACT SOCKET - 4 POINT SQUARE

METRIC - MM STANDARD

Part No.	Size mm	Price £
SQF17S	17	56.92
SQF18S	18	59.62
SQF19S	19	63.50
SQF20S	20	63.50
SQF21S	21	63.50
SQF22S	22	67.39
SQF23S	23	67.39
SQF24S	24	71.28
SQF25S	25	71.28
SQF26S	26	76.46
SQF27S	27	76.46
SQF28S	28	82.94
SQF30S	30	82.94
SQF32S	32	90.72
SQF33S	33	90.72
SQF35S	35	98.50
SQF36S	36	98.50
SQF38S	38	106.27
SQF40S	40	106.27
SQF41S	41	106.27
SQF43S	43	116.64
SQF45S	45	116.64
SQF46S	46	116.64
SQF50S	50	124.42
SQF51S	51	133.92
SQF52S	52	134.78
SQF54S	54	134.78
SQF55S	55	134.78
SQF60S	60	174.96
SQF65S	65	194.40
SQF70S	70	239.76
SQF75S	75	272.16
SQF80S	80	285.12
SQF85S	85	317.52
SQF90S	90	342.92
SQF95S	95	362.88
SQF100S	100	388.80
SQF105S	105	434.16

METRIC - MM LONG

Part No.	Size mm	Price £
SQF17L	17	83.46
SQF18L	18	83.46
SQF19L	19	88.91
SQF20L	20	88.91
SQF21L	21	88.99
SQF22L	22	99.79
SQF23L	23	99.79
SQF24L	24	99.79
SQF25L	25	99.79
SQF26L	26	107.05
SQF27L	27	107.05
SQF28L	28	116.12
SQF30L	30	116.12
SQF32L	32	127.01
SQF33L	33	127.01
SQF35L	35	137.89
SQF36L	36	137.89
SQF38L	38	148.78
SQF40L	40	148.78
SQF41L	41	148.78
SQF43L	43	163.60
SQF45L	45	163.60
SQF46L	46	163.60
SQF50L	50	174.18
SQF51L	51	174.18
SQF52L	52	188.70
SQF54L	54	188.70
SQF55L	55	188.70
SQF60L	60	244.94
SQF65L	65	272.16
SQF70L	70	335.66
SQF75L	75	381.02
SQF80L	80	399.17
SQF85L	85	444.53
SQF90L	90	471.74
SQF95L	95	508.03
SQF100L	100	544.32
SQF105L	105	607.82



Any items on this page can be ordered in Thinwall.

1" SQ. DR. IMPACT SOCKET - 4 POINT SQUARE

IMPERIAL - AF STANDARD			IMPERIAL - AF STANDARD			IMPERIAL - AF LONG			IMPERIAL - AF LONG		
Part No.	Size mm	Price £	Part No.	Size mm	Price £	Part No.	Size mm	Price £	Part No.	Size mm	Price £
SQF34AFS	3/4	63.50	SQF2916AFS	2.9/16	194.40	SQF34AFL	3/4	88.91	SQF2916AFL	2.9/16	272.16
SQF13A16FS	13/16	63.50	SQF258AFS	2.5/8	209.95	SQF13A16FL	13/16	88.91	SQF258AFL	2.5/8	297.00
SQF78AFS	7/8	63.50	SQF2116AFS	2.11/16	221.40	SQF78AFL	7/8	88.39	SQF2116AFL	2.11/16	313.20
SQF15A16FS	15/16	71.28	SQF234AFS	2.3/4	239.76	SQF15A16FL	15/16	99.79	SQF234AFL	2.3/4	335.66
SQF1AFS	1	76.46	SQF21316AFS	2.13/16	248.40	SQF1AFL	1	99.79	SQF21316AFL	2.13/16	367.20
SQF116AFS	1.1/16	76.46	SQF278AFS	2.7/8	259.20	SQF116AFL	1.1/16	107.05	SQF278AFL	2.7/8	399.60
SQF118AFS	1.1/8	77.76	SQF21516AFS	2.15/16	270.00	SQF118AFL	1.1/8	107.05	SQF21516AFL	2.15/16	437.40
SQF1316AFS	1.3/16	82.94	SQF3AFS	3	280.80	SQF1316AFL	1.3/16	116.12	SQF3AFL	3	453.60
SQF114AFS	1.1/4	90.72	SQF3116AFS	3.1/16	291.60	SQF114AFL	1.1/4	127.01	SQF3116AFL	3.1/16	459.00
SQF1516AFS	1.5/16	90.72	SQF318AFS	3.1/8	297.00	SQF1516AFL	1.5/16	127.01	SQF318AFL	3.1/8	469.80
SQF138AFS	1.3/8	98.50	SQF3316AFS	3.3/16	302.40	SQF138AFL	1.3/8	127.01	SQF3316AFL	3.3/16	486.00
SQF1716AFS	1.7/16	99.79	SQF314AFS	3.1/4	313.20	SQF1716AFL	1.7/16	127.01	SQF314AFL	3.1/4	491.40
SQF112AFS	1.1/2	106.27	SQF3516AFS	3.5/16	318.60	SQF112AFL	1.1/2	148.78	SQF3516AFL	3.5/16	502.20
SQF1916AFS	1.9/16	106.27	SQF338AFS	3.3/8	324.00	SQF1916AFL	1.9/16	148.78	SQF338AFL	3.3/8	507.60
SQF158AFS	1.5/8	106.27	SQF3716AFS	3.7/16	324.00	SQF158AFL	1.5/8	148.78	SQF3716AFL	3.7/16	518.40
SQF11116AFS	1.11/16	116.64	SQF312AFS	3.1/2	324.00	SQF11116AFL	1.11/16	163.30	SQF312AFL	3.1/2	518.40
SQF134AFS	1.3/4	116.64	SQF3916AFS	3.9/16	324.00	SQF134AFL	1.3/4	163.30	SQF3916AFL	3.9/16	529.20
SQF11316AFS	1.13/16	116.64	SQF358AFS	3.5/8	340.20	SQF11316AFL	1.13/16	163.30	SQF358AFL	3.5/8	540.00
SQF178AFS	1.7/8	120.96	SQF31116AFS	3.11/16	356.40	SQF178AFL	1.7/8	172.80	SQF31116AFL	3.11/16	550.80
SQF11516AFS	1.15/16	124.42	SQF334AFS	3.3/4	362.88	SQF11516AFL	1.15/16	172.80	SQF334AFL	3.3/4	561.60
SQF2AFS	2	133.92	SQF31316AFS	3.13/16	378.00	SQF2AFL	2	174.18	SQF31316AFL	3.13/16	572.40
SQF2116AFS	2.1/16	134.78	SQF378AFS	3.7/8	394.20	SQF2116AFL	2.1/16	183.60	SQF378AFL	3.7/8	583.20
SQF218AFS	2.1/8	134.78	SQF31516AFS	3.15/16	399.60	SQF218AFL	2.1/8	188.70	SQF31516AFL	3.15/16	588.60
SQF2316AFS	2.3/16	144.72	SQF4AFS	4	410.40	SQF2316AFL	2.3/16	205.20	SQF4AFL	4	594.00
SQF214AFS	2.1/4	157.68	SQF418AFS	4.1/8	434.16	SQF214AFS	2.1/4	226.80	SQF418AFL	4.1/8	607.82
SQF2516AFS	2.5/16	162.00	SQF414AFS	4.1/4	464.40	SQF2516AFL	2.5/16	232.20	SQF414AFL	4.1/4	642.60
SQF238AFS	2.3/8	174.96	SQF438AFS	4.3/8	507.60	SQF238AFL	2.3/8	244.94	SQF438AFL	4.3/8	680.40
SQF2716AFS	2.7/16	181.44	SQF412AFS	4.1/2	534.60	SQF2716AFL	2.7/16	272.16	SQF412AFL	4.1/2	707.40
SQF212AFS	2.1/2	183.60				SQF212AFL	2.1/2	272.16			

Any items on this page can be ordered in Thinwall.





IMPACT SOCKETS - 8 POINT OCTAGON

1/2" SQ. DR.		
Part No.	Size mm	Price £
OCTC27S	27	150.00
OCT32S	32	150.00
OCT36S	36	160.00
OCT41S	41	170.00
OCT55S	55	185.00
OCT85S	85	206.00

3/4" SQ. DR.		
Part No.	Size mm	Price £
OCTE27	27	166.32
OCTE30	30	166.32
OCTE41S	41	166.32
OCTE50S	50	166.32
OCTE55S	55	189.00
OCTE60S	60	189.00
OCTE65S	65	189.00
OCTE70S	70	189.00
OCTE75S	75	189.00
OCTE80S	80	194.00
OCTE85S	85	194.00
OCTE90S	90	206.00
OCTE95S	95	206.00
OCTE100S	100	236.00
OCTE105S	105	236.00
OCTE110S	110	248.00
OCTE115S	115	290.00
OCTE120S	120	302.00

3/4" SQ. DR.		
Part No.	Size mm	Price £
OCTF27	27	170.00
OCTF36	36	170.00
OCTF41S	41	170.00
OCTF50S	50	170.00
OCTF55S	56	170.00
OCTF60S	60	182.00
OCTF65S	65	182.00
OCTF70S	70	206.00
OCTF75S	75	206.00
OCTF80S	80	206.00
OCTF85S	85	206.00
OCTF90S	90	216.00
OCTF95S	95	236.00
OCTF100S	100	236.00
OCTF105S	105	248.00
OCTF110S	110	280.00
OCTF115S	115	312.00
OCTF120S	120	344.00
OCTF125S	125	344.00
OCFT130S	130	368.00



Deltec can manufacture Octagon - 8 sided sockets in all of the following:
 Drive: 3/8", 3/4", 1", 1.1/2", 2.1/2" Size: Metric MM / Imperial AF

TAP HOLDERS

Part No.	Drive	Size mm	Price £
TAPBM10	3/8	M10	32.40
TAPBM12	3/8	M12	32.40
TAPCM6	1/2	M6	32.40
TAPCM8	1/2	M8	32.40
TAPCM10	1/2	M10	32.40
TAPCM12	1/2	M12	32.40
TAPCM14	1/2	M14	32.40
TAPCM16	1/2	M16	32.40
TAPCM14AF	1/2	M1/4	32.40

CHANNEL SOCKETS

Part No.	Description	Price £
CHAN13	1/2" Channel-Unistrut 13mm	21.50
CHAN15	1/2" Channel-Unistrut 15mm	21.50
CHAN17	1/2" Channel-Unistrut 17mm	21.50
CHAN19	1/2" Channel-Unistrut 19mm	21.50

Tap Holders Channel Sockets





Impact Sockets - 1/2", 3/4" & 1" Sq. Dr. - Bi-Square

SQ. DR. IMPACT SOCKETS - 8 POINT BI-SQUARE

Any Size Metric, Imperial AF, Whitworth

1/2" SQ. DR.		
Part No.	Size mm	Price £
BSC11S	11	52.88
BSC14S	14	52.88
BSC17S	17	52.88
BSC19S	19	57.54
BSC21S	21	59.10
BSC24S	24	68.43
BSC27S	27	83.98
BSC32S	32	99.53
BSC36S	36	99.53
BSC41S	41	102.64

3/4" SQ. DR.		
Part No.	Size mm	Price £
BSE27	27	82.43
BSE30	30	93.31
BSE41S	41	124.42
BSE50S	50	139.97
BSE55S	55	156.60
BSE60S	60	182.52

1" SQ. DR.		
Part No.	Size mm	Price £
BSF27	27	91.76
BSF36	36	118.20
BSF41S	41	127.53
BSF50S	50	149.30
BSF55S	56	149.30
BSF60S	60	209.95
BSF65S	65	209.95
BSF70S	70	287.71
BSF75S	75	326.59
BSF80S	80	342.14
BSF85S	85	381.02
BSF90S	90	404.35
BSF95S	95	435.46
BSF100S	100	466.56



1/2" SQ. DR		
Part No.	Size mm	Price £
BSC18AFS	1/8	52.88
BSC316AFS	3/16	52.88
BSC14AFS	1/4	52.88
BSC516AFS	5/16	52.88
BSC38AFS	3/8	52.88
BSC716AFS	7/16	52.88
BSC12AFS	1/2	52.88
BSC916AFS	9/16	52.88
BSC58AFS	5/8	52.88
BSC1116AFS	11/16	52.88
BSC34AFS	3/4	57.54
BSC1316AFS	13/16	57.54
BSC78AFS	7/8	59.10
BSC1516AFS	15/16	68.43
BSC1AFS	1	78.62

3/4" SQ. DR		
Part No.	Size mm	Price £
BSE38AFS	3/8	62.21
BSE716AFS	7/16	62.21
BSE12AFS	1/2	62.21
BSE916AFS	9/16	66.87
BSE58AFS	5/8	66.87
BSE1116AFS	11/16	66.87
BSE34AFS	3/4	66.87
BSE1316AFS	13/16	66.87
BSE78AFS	7/8	69.98
BSE1516AFS	15/16	77.76
BSE1AFS	1	82.43
BSE116AFS	1.1/16	82.43
BSE118AFS	1.1/8	82.43
BSE114AFS	1.1/4	99.53
BSE138AFS	1.3/8	99.53
BSE112AFS	1.1/2	119.75
BSE158AFS	1.5/8	124.42
BSE134AFS	1.3/4	132.19
BSE178AFS	1.7/8	132.19
BSE2AFS	2	132.19

1" SQ. DR		
Part No.	Size mm	Price £
BSF12AFS	1/2	71.54
BSF916AFS	9/16	71.54
BSF28AFS	5/8	71.54
BSF1116AFS	11/16	71.54
BSF33AFS	3/4	71.54
BSF1316AFS	13/16	76.20
BSF78AFS	7/8	76.20
BSF1516AFS	15/16	85.54
BSF1AFS	1	91.76
BSF116AFS	1.1/16	93.32
BSF118AFS	1.1/8	93.32
BSF114AFS	1.1/4	108.86
BSF138AFS	1.3/8	108.86
BSF112AFS	1.1/2	127.53
BSF158AFS	1.5/8	127.53
BSF134AFS	1.3/4	139.97
BSF178AFS	1.7/8	145.15
BSF2AFS	2	160.70
BSF218AFS	2.1/8	161.74
BSF214AFS	2.1/4	189.22
BSF238AFS	2.3/8	209.95
BSF212AFS	2.1/2	220.32
BSF258AFS	2.5/8	246.24
BSF234AFS	2.3/4	287.71
BSF278AFS	2.7/8	311.04
BSF3AFS	3	336.96



Any items on this page can be ordered in Thinwall.

ADAPTORS, UNIVERSAL JOINTS AND SLEEVES

Step Down Adaptor

Part No.	Female	Male	Type	Sq Dia	Length	Price £
ADBA	3/8	1/4	Ball	22	32	12.96
ADCB	1/2	3/8	Ball	25	38	12.96
ADDC	5/8	1/2	Ball	43	43	27.00
ADEC	3/4	1/2	Ball	44	56	19.44
ADFC	1	1/2	Ball	54	70	48.60
ADED	3/4	5/8	Hole	44	53	27.00
ADFE	1	3/4	Hole	54	75	32.25
ADGF	1.1/2	1	Hole	86	100	91.58
ADHG	2.1/2	1.1/2	Hole	127	138	485.46

Step Up Adaptor

Part No.	Female	Male	Type	Sq Dia	Length	Price £
ADAB	1/4	3/8	Ball	13.6	26	12.96
ADBC	3/8	1/2	Ball	22	36	12.96
ADCD	1/2	5/8	Ball	43	43	27.00
ADCE	1/2	3/4	Hole	30	48	16.20
ADCF	1/2	1	Hole	33	60	34.34
ADDE	5/8	3/4	Hole	5	53	37.80
ADEF	3/4	1	Hole	44	63	23.76
ADFG	1	1.1/2	Hole	54	90	80.14
ADGH	1.1/2	2.1/2	Hole	86	120	320.54

Universal Joints

Part No.	Drive	Sq Dia	Length	Price £
UJA	1/4	18	43	25.92
UJB	3/8	24	50	27.00
UJC	1/2	32	60	23.76
UJE	3/4	44	105	58.32
UJF	1"	54	133	110.81
UJG	1.1/2	86	182	410.40
UJH	2.1/2	127	240	1,350.00

Sleeves Square Inserts

Part No.	Female	Male	Length	Diameter	Price £
SLAC	1/4	1/2	20	17	32.40
SLBC	3/8	1/2	19	17	32.40
SLCD	1/2	5/8	22	21	34.56
SLCE	1/2	3/4	29	26	34.56
SLEF	3/4	1"	33	34	36.72
SLFG	1"	1.1/2	46	50	64.80
SLGH	1.1/2	2.1/2	50	69	243.00
SLHJ	2.1/2	3.1/2	96	121	475.20

Hexagon sleeves available to order. Please enquire.



ADAPTORS AND UNIVERSAL JOINTS AND SLEEVES

Connectors Male - Male Square

Part No.	Male	Male	Length	Price £
ADMBC	3/8	1/2	28	10.80
ADMCC	1/2	1/2	37	10.80
ADMEC	1/2	3/4	40	16.20
ADMDD	5/8	5/8	40	19.44
ADMEE	3/4	3/4	50	25.92
ADMFE	1	3/4	55	21.60
ADMFF	1	1	90	48.60
ADMGG	1.1/2	1.1/2	90	70.20
ADMHH	2.1/2	2.1/2	100	129.60



Connectors Female - Female Square

Part No.	Female	Female	Diameter	Diameter	Length	Price £
ADFCC	1/2	1/2	25	25	33	17.17
ADFCD	5/8	1/2	35	30	41	25.18
ADFDD	5/8	5/8	35	35	35	37.80
ADFCE	3/4	1/2	44	30	49	40.06
ADFDE	3/4	5/8	44	35	50	45.79
ADFEE	3/4	3/4	44	44	49	40.06
ADFEF	1	3/4	54	44	63	97.20
ADFFF	1	1	54	54	59	85.86
ADFFG	1	1.1/2	54	85	90	108.75
ADFGG	1.1/2	1.1/2	86	86	85	135.00



Breaker Bars

Part No.	Drive	Length	Price £
BBARB450	3/8	450	56.10
BBARB600	3/8	600	97.30
BBARC450	1/2	450	84.71
BBARC600	1/2	600	97.30
BBARC900	1/2	900	148.17
BBARE450	3/4	450	97.20
BBARE600	3/4	600	125.92
BBARE1000	3/4	1000	215.22
BBARE1200	3/4	1200	362.30
BBARE1500	3/4	1500	397.64
BBARF600	1	600	160.27
BBARF1000	1	1000	240.40
BBARF1800	1	1800	320.54
BBARG	1.1/2	1180	629.64

Sliding T Bars

Part No.	Size mm	Price £
TBARB	3/8	12.96
TBARC	1/2	37.80
TBARE	3/4	51.51
TBARF	1	102.60
TBARG	1.1/2	356.40
TBARH	2.1/2	810.00



Please enquire for any other size required.

Part No.	Drive	Drive mm	Type	Sq Dia	Length "	Length mm	Price £
EX50A	1/4	1/4	Ball	13	2"	50	10.80
EX100A	1/4	1/4	Ball	13	4"	100	12.96
EX150A	1/4	1/4	Ball	13	6"	150	15.12
EX75B	3/8	3/8	Ball	19	3"	75	10.80
EX100B	3/8	3/8	Ball	19	4"	100	11.88
EX125B	3/8	3/8	Ball	19	5"	125	12.96
EX150B	3/8	3/8	Ball	19	6"	150	15.12
EX175B	3/8	3/8	Ball	19	7"	175	19.44
EX200B	3/8	3/8	Ball	19	8"	200	21.60
EX225B	3/8	3/8	Ball	19	18"	450	85.69
EX600B	3/8	3/8	Ball	19	24"	600	97.30
EX900B	3/8	3/8	Ball	19	26"	900	103.03
EX75C	1/2	1/2	Ball	25	3"	75	14.88
EX100C	1/2	1/2	Ball	25	4"	100	14.88
EX125C	1/2	1/2	Ball	25	5"	125	16.02
EX150C	1/2	1/2	Ball	25	6"	150	17.17
EX175C	1/2	1/2	Ball	25	7"	175	18.31
EX200C	1/2	1/2	Ball	25	8"	200	23.76
EX225C	1/2	1/2	Ball	25	9"	225	24.84
EX250C	1/2	1/2	Ball	25	10"	250	25.92
EX300C	1/2	1/2	Ball	25	12"	300	43.50
EX450C	1/2	1/2	Ball	25	18"	450	68.68
EX600C	1/2	1/2	Ball	25	24"	600	91.58
EX900C	1/2	1/2	Ball	25	36"	900	129.60
EX75E	3/4	3/4	Hole	44	3"	75	28.62
EX100E	3/4	3/4	Hole	44	4"	100	30.24
EX125E	3/4	3/4	Hole	44	5"	125	32.40
EX150E	3/4	3/4	Hole	44	6"	150	34.56
EX175E	3/4	3/4	Hole	44	7"	175	36.72
EX200E	3/4	3/4	Hole	44	8"	200	36.72
EX250E	3/4	3/4	Hole	44	10"	250	41.04
EX300E	3/4	3/4	Hole	44	12"	300	48.60
EX450E	3/4	3/4	Hole	44	18"	450	108.00
EX600E	3/4	3/4	Hole	44	24"	600	140.40
EX900E	3/4	3/4	Hole	44	36"	900	172.80
EX75F	1	1	Hole	54	3"	75	38.88
EX100F	1	1	Hole	54	4"	100	38.88
EX125F	1	1	Hole	54	5"	125	42.12
EX150F	1	1	Hole	54	6"	150	45.36
EX175F	1	1	Hole	54	7"	175	48.60
EX200F	1	1	Hole	54	8"	200	49.68
EX250F	1	1	Hole	54	10"	250	56.16
EX300F	1	1	Hole	54	12"	300	62.96
EX450F	1	1	Hole	54	18"	450	129.60
EX600F	1	1	Hole	54	24"	600	270.00
EX900F	1	1	Hole	54	36"	900	378.00
EX150G	1.1/2	1.1/2	Hole	86	6"	150	270.00
EX225G	1.1/2	1.1/2	Hole	86	9"	225	378.00
EX250G	1.1/2	1.1/2	Hole	86	10"	250	432.00
EX450G	1.1/2	1.1/2	Hole	86	18"	450	572.50
EX500G	1.1/2	1.1/2	Hole	86	20"	500	734.40

Male Hex Drivers

Male Hexagon Drivers - Allen Key Fixed (MM)

3/8" Square Drive		
Part No.	Size mm	Price £
MB3S	3	10.30
MB4S	4	10.30
MB5S	5	10.30
MB6S	6	10.30
MB7S	7	10.30
MB8S	8	10.30
MB9S	9	10.30
MB10S	10	10.30
MB11S	11	10.30
MB12S	12	10.30
MB13S	13	10.30
MB14S	14	10.30
MB15S	15	10.30
MB16S	16	10.30
MB17S	17	23.76

1/2" Square Drive		
Part No.	Size mm	Price £
MC4S	4	11.45
MC6S	6	11.45
MC8S	8	11.45
MC10S	10	11.45
MC11S	11	11.45
MC12S	12	11.45
MC13S	13	13.17
MC14S	14	13.17
MC15S	15	13.17
MC16S	16	13.17
MC17S	17	13.17
MC18S	18	13.17
MC19S	19	13.17
MC20S	20	40.07
MC21S	21	40.07
MC22S	22	40.07
MC23S	23	51.52
MC24S	24	51.52
MC25S	25	51.52
MC26S	26	51.52
MC27S	27	51.52
MC28S	28	74.41
MC29S	29	74.41
MC30S	30	51.52
MC32S	32	62.96
MC35S	35	68.69
MC38S	38	74.71
MC41S	41	156.60

3/4" Square Drive		
Part No.	Size mm	Price £
ME8S	8	43.15
ME10S	10	43.15
ME12S	12	43.15
ME14S	14	43.15
ME15S	15	43.15
ME16S	16	43.15
ME17S	17	43.15
ME18S	18	43.15
ME19S	19	43.15
ME20S	20	48.60
ME21S	21	48.60
ME22S	22	48.60
ME23S	23	48.60
ME24S	24	48.60
ME25S	25	48.60
ME26S	26	54.00
ME27S	27	54.00
ME28S	28	54.00
ME29S	29	54.00
ME30S	30	74.41
ME31S	31	103.03
ME32S	32	74.41
ME33S	33	103.03
ME34S	34	103.03
ME35S	35	103.03
ME36S	36	103.03
ME38S	38	103.03
ME41S	41	106.92

1.1/2" Square Drive		
Part No.	Size mm	Price £
MG17S	17	286.20
MG19S	19	286.20
MG24S	24	286.20
MG27S	27	286.20
MG30S	30	286.20
MG32S	32	286.20
MG35S	35	286.20
MG36S	36	286.20
MG38S	38	286.20
MG41S	41	286.20
MG42	42	286.20
MG46S	46	286.20
MG50S	50	286.20
MG55S	55	286.20
MG60S	60	286.20

1.1/2" Square Drive .. Continued		
Part No.	Size mm	Price £
MG65S	65	286.20
MG70S	70	286.20
MG75S	75	286.20
MG80S	80	307.80
MG85S	85	340.20
MG90S	90	351.00

1" Square Drive		
Part No.	Size mm	Price £
MF10S	10	55.08
MF12S	12	55.08
MF14S	14	55.08
MF14S	15	55.08
MF16S	16	58.38
MF17S	17	58.38
MF19S	19	59.40
MF20S	20	62.96
MF21S	21	62.96
MF22S	22	62.96
MF23S	23	108.76
MF24S	24	62.96
MF25S	25	108.76
MF26S	26	108.76
MF27S	27	81.00
MF28S	28	97.31
MF29S	29	108.76
MF30S	30	85.86
MF31S	31	107.68
MF32S	32	91.58
MF33S	33	91.58
MF34S	34	108.76
MF35S	35	108.76
MF36S	36	97.31
MF38S	38	97.20
MF39S	39	108.76
MF40S	40	108.76
MF41S	41	102.60
MF42S	42	108.76
MF43S	43	108.76
MF46S	46	171.72



MM & AF. Please enquire for any other size required, these can also be manufactured in male - bi hexagon and squares as Deltec manufacture in-house.

Male Hexagon Drivers - Allen Key Fixed (AF)

3/8" Square Drive

Part No.	Size AF	Price £
MB316AFS	3/16	10.30
MB14AFS	1/4	10.30
MB732AFS	7/32	10.30
MB516AFS	5/16	10.30
MB38AFS	3/8	10.30
MB716AFS	7/16	10.30
MB12AFS	1/2	10.30
MB916AFS	9/16	10.30
MB58AFS	5/8	10.30

1/2" Square Drive

Part No.	Size AF	Price £
MC316AFS	3/16	11.45
MC14AFS	1/4	11.45
MC516AFS	5/16	11.45
MC38AFS	3/8	11.45
MC716AFS	7/16	11.45
MC12AFS	1/2	11.45
MC916AFS	9/16	11.45
MC1732AFS	17/32	74.41
MC58AFS	5/8	13.17
MC34AFS	3/4	13.17
MC78AFS	7/8	40.07
MC1AFS	1	51.52
MC1116AFS	1.1/16	51.52
MC1316AFS	1.3/16	51.52
MC114AFS	1.1/4	62.96
MC138AFS	1.3/8	68.69

3/4" Square Drive

Part No.	Size AF	Price £
ME516AFS	5/16	43.15
ME38AFS	3/8	43.15
ME716AFS	7/16	43.15
ME12AFS	1/2	43.15
ME916AFS	9/16	43.15
ME58AFS	5/8	43.15
ME11A16FS	11/16	43.15
ME34AFS	3/4	43.15
ME78AFS	7/8	45.36
ME1AFS	1	45.36
ME1116AFS	1.1/16	54.00
ME118AFS	1.1/8	57.24
ME1316AFS	1.3/16	74.41
ME114AFS	1.1/4	74.41
ME138AFS	1.3/8	91.58
ME112AFS	1.1/2	103.03
ME158AFS	1.5/8	106.92

1" Square Drive

Part No.	Size AF	Price £
MF38AFS	3/8	55.08
MF716AFS	7/16	55.08
MF12AFS	1/2	55.08
MF916AFS	9/16	55.08
MF58AFS	5/8	55.08
M34AFS	3/4	59.40
MF78AFS	7/8	59.40
MF1AFS	1	59.40
MF1116AFS	1.1/16	81.00
MF118AFS	1.1/8	81.00
MF114AFS	1.1/4	91.58
MF138AFS	1.3/8	91.80
MF112AFS	1.1/2	97.20
MF158AFS	1.5/8	102.60
MF11116AFS	1.11/16	102.60
MF134AFS	1.3/4	108.76
MF11316AFS	1.13/16	171.72

1.1/2" Square Drive

Part No.	Size AF	Price £
MG1516AFS	15/16	286.20
MG1AFS	1	286.20
MG1116AFS	1.1/16	286.20
MG118AFS	1.1/8	286.20
MG1316AFS	1.3/16	286.20
MG114AFS	1.1/4	286.20
MG138AFS	1.3/8	286.20
MG112AFS	1.1/2	286.20
MG158AFS	1.5/8	286.20
MG134AFS	1.3/4	286.20
MG178AFS	1.7/8	286.20
MG2AFS	2	286.20



Torx Sockets - Male

Male Torx 3/8" Drive

Part No.	Drive	Size	Description	Overall Length	Price £
MTBT9	3/8	T9	Male - Internal Torx	50	7.56
MTBT10	3/8	T10	Male - Internal Torx	50	7.56
MTBT15	3/8	T15	Male - Internal Torx	50	7.56
MTBT20	3/8	T20	Male - Internal Torx	50	7.56
MTBT25	3/8	T25	Male - Internal Torx	50	7.56
MTBT27	3/8	T27	Male - Internal Torx	50	7.56
MTBT30	3/8	T30	Male - Internal Torx	50	7.56
MTBT40	3/8	T40	Male - Internal Torx	50	7.56
MTBT45	3/8	T45	Male - Internal Torx	50	7.56
MTBT47	3/8	T47	Male - Internal Torx	50	7.56
MTBT50	3/8	T50	Male - Internal Torx	50	7.56

Male Torx 1/2" Drive

Part No.	Drive	Size	Description	Overall Length	Price £
MTCT20	1/2	T20	Male - Internal Torx	55	8.64
MTCT25	1/2	T25	Male - Internal Torx	55	8.64
MTCT27	1/2	T27	Male - Internal Torx	55	8.64
MTCT30	1/2	T30	Male - Internal Torx	55	8.64
MTCT40	1/2	T40	Male - Internal Torx	55	8.64
MTCT45	1/2	T45	Male - Internal Torx	55	8.64
MTCT47	1/2	T47	Male - Internal Torx	55	8.64
MTCT50	1/2	T50	Male - Internal Torx	55	8.64
MTCT55	1/2	T55	Male - Internal Torx	55	8.64
MTCT60	1/2	T60	Male - Internal Torx	55	12.96
MTCT70	1/2	T70	Male - Internal Torx	55	12.96
MTCT80	1/2	T80	Male - Internal Torx	55	12.96
MTCT90	1/2	T90	Male - Internal Torx	55	12.96
MTCT100	1/2	T100	Male - Internal Torx	55	12.96

Male Torx 3/4" Drive

Part No.	Drive	Size	Description	Overall Length	Price £
MTET55	3/4	T55	Male - Internal Torx	110	52.92
MTET60	3/4	T60	Male - Internal Torx	110	52.92
MTET70	3/4	T70	Male - Internal Torx	110	57.24
MTET80	3/4	T80	Male - Internal Torx	110	57.24
MTET90	3/4	T90	Male - Internal Torx	110	57.24
MTET100	3/4	T100	Male - Internal Torx	110	61.56



Female Torx 1/2" Drive

Part No.	Drive	Size	Description	Overall Length	Torx Dia	Length	Price £
CE10	1/2	E10	Female - External Torx	25	15	38	8.64
CE11	1/2	E11	Female - External Torx	25	15.5	38	8.64
CE12	1/2	E12	Female - External Torx	25	16	38	8.64
CE14	1/2	E14	Female - External Torx	25	18.5	38	8.64
CE16	1/2	E16	Female - External Torx	25	20	38	9.72
CE18	1/2	E18	Female - External Torx	25	22	38	11.88
CE20	1/2	E20	Female - External Torx	30	25	38	11.88
CE22	1/2	E22	Female - External Torx	30	26.5	45	12.96
CE24	1/2	E24	Female - External Torx	30	28.5	45	16.20

Female Torx 3/4" Drive

Part No.	Drive	Size	Description	Overall Length	Torx Dia	Length	Price £
EE12S	3/4	E12	Female - Internal	44	30	50	61.56
EE14S	3/4	E14	Female - Internal	44	30	50	61.56
EE18S	3/4	E18	Female - Internal	44	30	50	61.56
EE20S	3/4	E20	Female - Internal	44	30	50	61.56
EE22S	3/4	E22	Female - Internal	44	30	50	61.56
EE24S	3/4	E24	Female - Internal	44	33	55	61.56



Hexagon Drive Holders

3/8" Square Drive

Part No.	Drive	Female Hex	Sq Dia	Shaft Dia	Length	Price £
HBHB716	3/8	7/16	22	22	38	19.46
HBHC716	1/2	7/16	26	26	40	19.46
HBHC78	1/2	7/8	40	40	55	25.49
HBHE78	3/4	7/8	43	43	55	38.02
HBHF78	1	7/8	55	55	64	47.63
HBHF32	1	1.1/4	63	63	69	66.40
HBHG32	1.1/2	1.1/4	83	68	100	226.80
HBHG134	1.1/2	1.3/4	83	83	100	259.20



Metric Hex Bits

Part No.	Hex	Size mm	Sq Dia	Shaft Dia	Length 2	Price £
HB7166	7/16	6	28	14	14	12.59
HB7168	7/16	8	28	14	14	12.59
HB71610	7/16	10	28	14	14	14.04
HB71612	7/16	12	28	14	14	12.59
HB71614	7/16	14	28	14	14	12.59
HB71619	7/16	19	28	14	14	19.46
HB7810	7/8	10	45	22	23	21.71
HB7812	7/8	12	45	22	23	21.71
HB7814	7/8	14	45	22	23	21.71
HB7817	7/8	17	45	22	23	21.71
HB7819	7/8	19	45	22	23	21.71
HB7822	7/8	22	45	22	23	21.71
HB7824	7/8	24	45	22	23	27.97
HB3227	1.1/4	27	65	30	35	50.11
HB3230	1.1/4	30	65	30	35	50.11
HB3232	1.1/4	32	65	30	35	50.11
HB3233	1.1/4	33	65	30	35	50.11
HB3236	1.3/4	36	75	35	40	129.60
HB3238	1.3/4	38	75	35	40	129.60
HB13441	1.3/4	41	75	35	40	129.60
HB13446	1.3/4	46	75	35	40	129.60
HB13450	1.3/4	50	75	35	40	120.00

AF Hex Bits

Part No.	Hex	Size mm	Sq Dia	Shaft Dia	Length 2	Price £
HB71614	7/16	1/4	28	14	14	14.04
HB716516	7/16	5/16	28	14	14	14.04
HB71638	7/16	3/8	28	14	14	14.04
HB716716	7/16	7/16	28	14	14	14.04
HB71612	7/16	1/2	28	14	14	14.04
HB716916	7/16	9/16	28	14	14	14.04
HB71619	7/16	3/4	28	14	14	14.04
HB7838	7/8	3/8	45	22	23	21.71
HB7812	7/8	1/2	45	22	23	21.71
HB78916	7/8	9/16	45	22	23	21.71
HB7858	7/8	5/8	45	22	23	21.71
HB7819	7/8	3/4	45	22	23	21.71
HB781316	7/8	13/16	45	22	23	27.97
HB7878	7/8	7/8	45	22	23	27.97
HB781	7/8	1	45	22	23	27.97
HB321	1.1/4	1	65	30	35	50.11
HB3227	1.1/4	1.1/6	65	30	35	50.11
HB32118	1.1/4	1.1/8	65	30	35	50.11
HB3230	1.1/4	1.3/16	65	30	35	50.11
HB3232	1.1/4	1.1/4	65	30	35	50.11
HB321516	1.1/4	1.5/16	65	30	35	50.11
HB13435	1.3/4	1.3/8	75	35	40	129.60
HB13438	1.3/4	1.1/2	75	35	40	129.60
HB13441	1.3/4	1.5/8	75	35	40	129.60
HB134134	1.3/4	1.3/4	75	35	40	129.60
HB134178	1.3/4	1.7/8	75	35	40	129.60
HB1342	1.3/4	2	75	35	40	129.60

Part No.	Size	Length mm	Price £
HEXBAR	10	75	£12.96
HEXBAR	12	75	£25.92
HEXBAR	14	75	£25.92
HEXBAR	17	75	£25.92
HEXBAR	19	75	£25.92
HEXBAR	22	75	£25.92
HEXBAR	24	75	£25.92

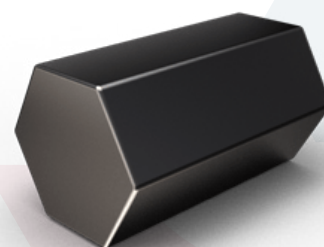
HEXBAR	10	100	£27.54
HEXBAR	12	100	£29.30
HEXBAR	14	100	£30.24
HEXBAR	17	100	£32.40
HEXBAR	19	100	£34.04
HEXBAR	22	100	£34.56
HEXBAR	24	100	£86.40
HEXBAR	27	100	£87.60
HEXBAR	30	100	£91.64
HEXBAR	32	100	£93.80
HEXBAR	36	100	£105.00
HEXBAR	41	100	£126.00
HEXBAR	46	100	£136.00
HEXBAR	50	100	£156.00
HEXBAR	55	100	£162.00
HEXBAR	60	100	£205.38
HEXBAR	65	100	£228.00

HEXBAR	14	150	£34.56
HEXBAR	17	150	£36.77
HEXBAR	19	150	£37.95
HEXBAR	22	150	£40.66
HEXBAR	24	150	£42.72
HEXBAR	27	150	£43.37
HEXBAR	30	150	£108.43
HEXBAR	32	150	£109.94
HEXBAR	36	150	£115.01
HEXBAR	41	150	£117.72
HEXBAR	46	150	£131.78
HEXBAR	50	150	£158.13
HEXBAR	55	150	£170.68
HEXBAR	60	150	£195.78
HEXBAR	65	150	£203.31

Part No.	Size	Length mm	Price £
HEXBAR	14	200	£37.52
HEXBAR	17	200	£44.28
HEXBAR	19	200	£44.68
HEXBAR	22	200	£51.28
HEXBAR	24	200	£87.60
HEXBAR	27	200	£96.40
HEXBAR	30	200	£108.00
HEXBAR	32	200	£117.20
HEXBAR	36	200	£157.50
HEXBAR	41	200	£177.60
HEXBAR	46	200	£204.00
HEXBAR	50	200	£234.00
HEXBAR	55	200	£243.00
HEXBAR	60	200	£308.06
HEXBAR	65	200	£342.00

HEXBAR	17	300	£56.80
HEXBAR	19	300	£77.20
HEXBAR	22	300	£90.80
HEXBAR	24	300	£108.00
HEXBAR	27	300	£116.00
HEXBAR	30	300	£123.00
HEXBAR	32	300	£126.00
HEXBAR	36	300	£226.80
HEXBAR	41	300	£236.24
HEXBAR	46	300	£306.00
HEXBAR	50	300	£351.00
HEXBAR	55	300	£364.50
HEXBAR	60	300	£462.10
HEXBAR	65	300	£513.00
HEXBAR	55	300	364.50

HEXBAR	32	600	£220.00
HEXBAR	36	600	£340.20
HEXBAR	41	600	£354.36
HEXBAR	46	600	£459.00
HEXBAR	50	600	£527.50
HEXBAR	55	600	£546.74
HEXBAR	60	600	£693.14
HEXBAR	65	600	£769.50
HEXBAR	65	600	769.50



Crowfoot Spanners - Metric MM

Part No.	Size mm	Price £
CFB7	7	£77.76
CFB8	8	£77.76
CFB9	9	£77.76
CFB10	10	£77.76
CFB11	11	£77.76
CFB12	12	£77.76
CFB13	13	£77.76
CFB14	14	£77.76
CFB15	15	£77.76
CFB16	16	£77.76
CFB17	17	£77.76
CFB18	18	£77.76
CFB19	19	£77.76
CFB20	20	£77.76
CFB21	21	£77.76
CFB22	22	£77.76
CFB23	23	£84.24
CFB24	24	£84.24
CFB25	25	£84.24
CFB26	26	£84.24
CFB27	27	£84.24
CFB28	28	£84.24
CFB30	30	£97.20
CFB32	32	£97.20
CFB34	34	£97.20
CFB35	35	£103.68
CFB36	36	£103.68
CFB38	38	£103.68
CFB41	41	£129.60
CFB42	42	£129.60
CFB43	43	£129.60
CFB45	45	£140.40
CFB46	46	£149.04
CFB48	48	£162.00
CFB50	50	£162.00
CFB51	51	£162.00
CFB55	55	£162.00
CFB60	60	£172.38
CFB65	65	£172.80
CFB70	70	£183.58
CFB75	75	£194.40
CFB80	80	£198.73
CFB85	85	£200.88
CFB90	90	£213.84
CFB95	95	£226.80
CFB100	100	£237.60

Part No.	Size mm	Price £
CFC9	9	£84.24
CFC10	10	£84.24
CFC11	11	£84.24
CFC12	12	£84.24
CFC13	13	£84.24
CFC14	14	£84.24
CFC17	17	£84.24
CFC19	19	£84.24
CFC20	20	£84.24
CFC21	21	£84.24
CFC22	22	£84.24
CFC24	24	£84.24
CFC26	26	£86.40
CFC27	27	£97.20
CFC28	28	£97.20
CFC30	30	£114.05
CFC32	32	£114.05
CFC34	34	£114.05
CFC35	35	£114.05
CFC36	36	£114.05
CFC38	38	£123.53
CFC40	40	£142.56
CFC41	41	£142.56
CFC42	42	£142.56
CFC44	44	£154.44
CFC45	45	£163.94
CFC46	46	£163.94
CFC48	48	£163.94
CFC50	50	£178.20
CFC52	52	£178.20
CFC54	54	£178.20
CFC55	55	£184.14
CFC60	60	£190.08
CFC65	65	£194.83
CFC70	70	£201.96
CFC75	75	£213.84
CFC80	80	£224.53
CFC85	85	£225.25
CFC90	90	£235.22
CFC95	95	£249.48
CFC100	100	£261.36

Part No.	Size mm	Price £
CFE11	11	£103.68
CFE12	12	£103.68
CFE13	13	£103.68
CFE14	14	£103.68
CFE15	15	£103.68
CFE16	16	£103.68
CFE17	17	£103.68
CFE19	19	£103.68
CFE24	24	£103.68
CFE26	26	£103.68
CFE27	27	£103.68
CFE30	30	£116.64
CFE32	32	£123.12
CFE34	34	£129.60
CFE35	35	£136.08
CFE36	36	£136.08
CFE38	38	£136.08
CFE41	41	£186.82
CFE42	42	£186.82
CFE43	43	£186.82
CFE46	46	£186.82
CFE48	48	£186.82
CFE50	50	£186.82
CFE51	51	£186.82
CFE52	52	£186.82
CFE55	55	£186.82
CFE56	56	£186.82
CFE60	60	£194.40
CFE65	65	£207.36
CFE70	70	£213.84
CFE75	75	£220.32
CFE80	80	£220.32
CFE85	85	£220.32
CFE90	90	£220.32
CFE95	95	£226.80
CFE100	100	£239.76
CFE105	105	£239.76
CFE110	110	£270.00
CFE115	115	£280.00
CFE120	120	£291.60
CFE130	130	£299.00

MM & AF available in open, Ringed, Fland and Spigot. Crowfoot Spanners / Wrenches - any size can be made to order. Please enquire.



Crowfoot Spanners - Imperial AF

Part No.	Size mm	Price £
CFB316AF	3/16	£77.76
CFB14AF	1/4	£77.76
CFB516	5/16	£77.76
CFB38	3/8	£77.76
CFB716AF	7/16	£77.76
CFB12AF	1/2	£77.76
CFB916AF	9/16	£77.76
CFB58	5/8	£77.76
CFB11A16AF	11/16	£77.76
CFB34AF	3/4	£77.76
CFB13A16AF	13/16	£77.76
CFB78AF	7/8	£77.76
CFB1516AF	15/16	£84.24
CFB1AF	1	£84.24
CFB116AF	1.1/16	£84.24
CFB118AF	1.1/8	£90.72
CFB1316AF	1.3/16	£97.20
CFB114AF	1.1/4	£97.20
CFB1516AF	1.5/16	£103.68
CFB138AF	1.3/8	£103.68
CFB1716AF	1.7/16	£103.68
CFB112AF	1.1/2	£103.68
CFB1916AF	1.9/16	£103.68

Part No.	Size mm	Price £
CFC38AF	3/8	£84.24
CFC14AF	1/4	£84.24
CFC516	5/16	£84.24
CFC38	3/8	£84.24
CFC716AF	7/16	£84.24
CFC12AF	1/2	£84.24
CFC916AF	9/16	£84.24
CFC58	5/8	£84.24
CFC11A16AF	11/16	£84.24
CFC34AF	3/4	£84.24
CFC13A16AF	13/16	£84.24
CFC78AF	7/8	£84.24
CFC1516AF	15/16	£84.24
CFC1AF	1	£84.24
CFC116AF	1.1/16	£97.20
CFC118AF	1.1/8	£97.20
CFC1316AF	1.3/16	£114.05
CFC114AF	1.1/4	£114.05
CFC1516AF	1.5/16	£114.05
CFC138AF	1.3/8	£114.05
CFC1716AF	1.7/16	£114.05
CFC112AF	1.1/2	£114.05
CFC1916AF	1.9/16	£142.56
CFC158AF	1.5/8	£142.56
CFC11116AF	1.11/16	£154.44
CFC134AF	1.3/4	£163.94
CFC11316AF	1.13/16	£163.94
CFC178AF	1.7/8	£163.94
CFC11516AF	1.15/16	£178.20
CFC2AF	2	£178.20
CFC2116AF	2.1/16	£178.20
CFC218AF	2.1/8	£178.20
CFC2316AF	2.3/16	£184.14
CFC214AF	2.1/4	£184.14
CFC2516AF	2.5/16	£190.08
CFC238AF	2.3/8	£190.08
CFC212AF	2.1/2	£194.83
CFC21316AF	2.13/16	£213.84
CFC278AF	2.7/8	£213.84
CFC3AF	3	£224.53

Part No.	Size mm	Price £
CFE716AF	7/16	£103.68
CFE12AF	1/2	£103.68
CFE916AF	9/16	£103.68
CFE58AF	5/8	£103.68
CFE11A16AF	11/16	£103.68
CFE34AF	3/4	£103.68
CFE13A16AF	13/16	£103.68
CFE78AF	7/8	£103.68
CFE1516AF	15/16	£103.68
CFE1AF	1	£103.68
CFE116AF	1.1/16	£103.68
CFE118AF	1.1/8	£116.64
CFE1316AF	1.3/16	£116.64
CFE114AF	1.1/4	£123.12
CFE1516AF	1.5/16	£136.08
CFE138AF	1.3/8	£136.08
CFE1716AF	1.7/16	£136.08
CFE112AF	1.1/2	£136.08
CFE1916AF	1.9/16	£168.48
CFE158AF	1.5/8	£186.82
CFE11116AF	1.11/16	£186.82
CFE134AF	1.3/4	£186.82
CFE11316AF	1.13/16	£186.82
CFE178AF	1.7/8	£186.82
CFE11516AF	1.15/16	£186.82
CFE2AF	2	£186.82
CFE2116AF	2.1/16	£186.82
CFE218AF	2.1/8	£186.82
CFE2316AF	2.3/16	£186.82
CFE214AF	2.1/4	£186.82
CFE2516AF	2.5/16	£186.82
CFE238AF	2.3/8	£194.40
CFE2716AF	2.7/16	£200.88
CFE212AF	2.1/2	£200.88
CFE2916AF	2.9/16	£207.36
CFE258AF	2.5/8	£207.36
CFE21116AF	2.11/16	£207.36
CFE234AF	2.3/4	£213.84
CFE21316AF	2.13/16	£213.84
CFE278AF	2.7/8	£213.84
CFE21516AF	2.15/16	£213.84
CFE3AF	3	220.32
CFE3116AF	3.1/16	230.32
CFE318AF	3.1/8	230.32
CFE3116AF	3.1/16	230.32
CFE318AF	3.1/8	230.32
CFE3316AF	3.3/16	233.28
CFE314AF	3.1/4	240.32
CFE3516AF	3.5/16	240.32
CFE338AF	3.3/8	240.32
CFE3716AF	3.7/16	250.32
CFE312AF	3.1/2	250.32



16mm Spigot Crowfoot - Metric MM

Part No.	Size mm	Price £
SPIG16-CFB7	7	£116.64
SPIG16-CFB8	8	£116.64
SPIG16-CFB9	9	£116.64
SPIG16-CFB10	10	£116.64
SPIG16-CFB11	11	£116.64
SPIG16-CFB12	12	£116.64
SPIG16-CFB13	13	£116.64
SPIG16-CFB14	14	£116.64
SPIG16-CFB15	15	£116.64
SPIG16-CFB16	16	£116.64
SPIG16-CFB17	17	£116.64
SPIG16-CFB18	18	£116.64
SPIG16-CFB19	19	£116.64
SPIG16-CFB20	20	£116.64
SPIG16-CFB21	21	£116.64
SPIG16-CFB22	22	£116.64
SPIG16-CFB23	23	£126.36
SPIG16-CFB24	24	£126.36
SPIG16-CFB25	25	£126.36
SPIG16-CFB26	26	£126.36
SPIG16-CFB27	27	£126.36
SPIG16-CFB28	28	£126.36
SPIG16-CFB30	30	£145.80
SPIG16-CFB32	32	£145.80
SPIG16-CFB34	34	£145.80
SPIG16-CFB35	35	£155.52
SPIG16-CFB36	36	£155.52
SPIG16-CFB38	38	£155.52
SPIG16-CFB41	41	£194.40
SPIG16-CFB42	42	£194.40
SPIG16-CFB43	43	£194.40
SPIG16-CFB45	45	£210.60
SPIG16-CFB46	46	£223.56
SPIG16-CFB48	48	£243.00
SPIG16-CFB50	50	£243.00
SPIG16-CFB51	51	£243.00
SPIG16-CFB55	55	£243.00
SPIG16-CFB60	60	£258.57
SPIG16-CFB65	65	£259.20
SPIG16-CFB70	70	£275.37
SPIG16-CFB75	75	£291.60
SPIG16-CFB80	80	£298.10
SPIG16-CFB85	85	£301.32
SPIG16-CFB90	90	£320.76
SPIG16-CFB95	95	£340.20
SPIG16-CFB100	100	£356.40

Part No.	Size mm	Price £
SPIG16-CFC9	9	£126.36
SPIG16-CFC10	10	£126.36
SPIG16-CFC11	11	£126.36
SPIG16-CFC12	12	£126.36
SPIG16-CFC13	13	£126.36
SPIG16-CFC14	14	£126.36
SPIG16-CFC17	17	£126.36
SPIG16-CFC19	19	£126.36
SPIG16-CFC20	20	£126.36
SPIG16-CFC21	21	£126.36
SPIG16-CFC22	22	£126.36
SPIG16-CFC24	24	£126.36
SPIG16-CFC26	26	£129.60
SPIG16-CFC27	27	£145.80
SPIG16-CFC28	28	£145.80
SPIG16-CFC30	30	£171.08
SPIG16-CFC32	32	£171.08
SPIG16-CFC34	34	£171.08
SPIG16-CFC35	35	£171.08
SPIG16-CFC36	36	£171.08
SPIG16-CFC38	38	£185.30
SPIG16-CFC40	40	£213.84
SPIG16-CFC41	41	£213.84
SPIG16-CFC42	42	£213.84
SPIG16-CFC44	44	£231.66
SPIG16-CFC45	45	£245.91
SPIG16-CFC46	46	£245.91
SPIG16-CFC48	48	£245.91
SPIG16-CFC50	50	£267.30
SPIG16-CFC52	52	£267.30
SPIG16-CFC54	54	£267.30
SPIG16-CFC55	55	£276.21
SPIG16-CFC60	60	£285.12
SPIG16-CFC65	65	£292.25
SPIG16-CFC70	70	£302.94
SPIG16-CFC75	75	£320.76
SPIG16-CFC80	80	£336.80
SPIG16-CFC85	85	£337.88
SPIG16-CFC90	90	£352.83
SPIG16-CFC95	95	£374.22
SPIG16-CFC100	100	£392.04

Part No.	Size mm	Price £
SPIG16-CFE11	11	£155.52
SPIG16-CFE12	12	£155.52
SPIG16-CFE13	13	£155.52
SPIG16-CFE14	14	£155.52
SPIG16-CFE15	15	£155.52
SPIG16-CFE16	16	£155.52
SPIG16-CFE17	17	£155.52
SPIG16-CFE19	19	£155.52
SPIG16-CFE24	24	£155.52
SPIG16-CFE26	26	£155.52
SPIG16-CFE27	27	£155.52
SPIG16-CFE30	30	£174.96
SPIG16-CFE32	32	£184.68
SPIG16-CFE34	34	£194.40
SPIG16-CFE35	35	£204.12
SPIG16-CFE36	36	£204.12
SPIG16-CFE38	38	£204.12
SPIG16-CFE41	41	£280.23
SPIG16-CFE42	42	£280.23
SPIG16-CFE43	43	£280.23
SPIG16-CFE46	46	£280.23
SPIG16-CFE48	48	£280.23
SPIG16-CFE50	50	£280.23
SPIG16-CFE51	51	£280.23
SPIG16-CFE52	52	£280.23
SPIG16-CFE55	55	£280.23
SPIG16-CFE56	56	£280.23
SPIG16-CFE60	60	£291.60
SPIG16-CFE65	65	£311.04
SPIG16-CFE70	70	£320.76
SPIG16-CFE75	75	£330.48
SPIG16-CFE80	80	£345.48
SPIG16-CFE85	85	£360.48
SPIG16-CFE90	90	£375.48
SPIG16-CFE95	95	£394.20
SPIG16-CFE100	100	£406.14
SPIG16-CFE105	105	£418.14
SPIG16-CFE110	110	£427.50
SPIG16-CFE115	115	£447.00
SPIG16-CFE120	120	£472.50
SPIG16-CFE130	130	£495.00

MM & AF available in Open, Ringed, Fland and Spigot. Crowfoot Spanners / Wrenches - Any size available, Metric, Imperial AF or BSW Whitworth. Please enquire.

16mm Spigot Crowfoot - Imperial AF

Part No.	Size mm	Price £
SPIG16-CFB316AF	3/16	£116.64
SPIG16-CFB14AF	1/4	£116.64
SPIG16-CFB516	5/16	£116.64
SPIG16-CFB38	3/8	£116.64
SPIG16-CFB716AF	7/16	£116.64
SPIG16-CFB12AF	1/2	£116.64
SPIG16-CFB916AF	9/16	£116.64
SPIG16-CFB58	5/8	£116.64
SPIG16-CFB11A16AF	11/16	£116.64
SPIG16-CFB34AF	3/4	£116.64
SPIG16-CFB13A16AF	13/16	£116.64
SPIG16-CFB78AF	7/8	£116.64
SPIG16-CFB1516AF	15/16	£126.36
SPIG16-CFB1AF	1	£126.36
SPIG16-CFB116AF	1.1/16	£126.36
SPIG16-CFB118AF	1.1/8	£136.08
SPIG16-CFB1316AF	1.3/16	£145.80
SPIG16-CFB114AF	1.1/4	£145.80
SPIG16-CFB1516AF	1.5/16	£155.52
SPIG16-CFB138AF	1.3/8	£155.52
SPIG16-CFB1716AF	1.7/16	£155.52
SPIG16-CFB112AF	1.1/2	£155.52
SPIG16-CFB1916AF	1.9/16	£155.52

Part No.	Size mm	Price £
SPIG16-CFC38AF	3/8	£126.36
SPIG16-CFC14AF	1/4	£126.36
SPIG16-CFC516	5/16	£126.36
SPIG16-CFC38	3/8	£126.36
SPIG16-CFC716AF	7/16	£126.36
SPIG16-CFC12AF	1/2	£126.36
SPIG16-CFC916AF	9/16	£126.36
SPIG16-CFC58	5/8	£126.36
SPIG16-CFC11A16AF	11/16	£126.36
SPIG16-CFC34AF	3/4	£126.36
SPIG16-CFC13A16AF	13/16	£126.36
SPIG16-CFC78AF	7/8	£126.36
SPIG16-CFC1516AF	15/16	£126.36
SPIG16-CFC1AF	1	£126.36
SPIG16-CFC116AF	1.1/16	£145.80
SPIG16-CFC118AF	1.1/8	£145.80
SPIG16-CFC1316AF	1.3/16	£171.08
SPIG16-CFC114AF	1.1/4	£171.08
SPIG16-CFC1516AF	1.5/16	£171.08
SPIG16-CFC138AF	1.3/8	£171.08
SPIG16-CFC1716AF	1.7/16	£171.08
SPIG16-CFC112AF	1.1/2	£171.08
SPIG16-CFC1916AF	1.9/16	£213.84
SPIG16-CFC158AF	1.5/8	£213.84
SPIG16-CFC11116AF	1.11/16	£231.66
SPIG16-CFC134AF	1.3/4	£245.91
SPIG16-CFC11316AF	1.13/16	£245.91
SPIG16-CFC178AF	1.7/8	£245.91
SPIG16-CFC11516AF	1.15/16	£267.30
SPIG16-CFC2AF	2	£267.30
SPIG16-CFC2116AF	2.1/16	£267.30
SPIG16-CFC218AF	2.1/8	£267.30
SPIG16-CFC2316AF	2.3/16	£276.21
SPIG16-CFC214AF	2.1/4	£276.21
SPIG16-CFC2516AF	2.5/16	£285.12
SPIG16-CFC238AF	2.3/8	£285.12
SPIG16-CFC212AF	2.1/2	£292.25
SPIG16-CFC21316AF	2.13/16	£320.76
SPIG16-CFC278AF	2.7/8	£320.76
SPIG16-CFC3AF	3	£352.83

Part No.	Size mm	Price £
SPIG16-CFE716AF	7/16	£155.52
SPIG16-CFE12AF	1/2	£155.52
SPIG16-CFE916AF	9/16	£155.52
SPIG16-CFE58AF	5/8	£155.52
SPIG16-CFE11A16AF	11/16	£155.52
SPIG16-CFE34AF	3/4	£155.52
SPIG16-CFE13A16AF	13/16	£155.52
SPIG16-CFE78AF	7/8	£155.52
SPIG16-CFE1516AF	15/16	£155.52
SPIG16-CFE1AF	1	£155.52
SPIG16-CFE116AF	1.1/16	£155.52
SPIG16-CFE118AF	1.1/8	£174.96
SPIG16-CFE1316AF	1.3/16	£174.96
SPIG16-CFE114AF	1.1/4	£184.68
SPIG16-CFE1516AF	1.5/16	£204.12
SPIG16-CFE138AF	1.3/8	£204.12
SPIG16-CFE1716AF	1.7/16	£204.12
SPIG16-CFE112AF	1.1/2	£204.12
SPIG16-CFE1916AF	1.9/16	£252.72
SPIG16-CFE158AF	1.5/8	£280.23
SPIG16-CFE11116AF	1.11/16	£280.23
SPIG16-CFE134AF	1.3/4	£280.23
SPIG16-CFE11316AF	1.13/16	£280.23
SPIG16-CFE178AF	1.7/8	£280.23
SPIG16-CFE11516AF	1.15/16	£280.23
SPIG16-CFE2AF	2	£280.23
SPIG16-CFE2116AF	2.1/16	£280.23
SPIG16-CFE218AF	2.1/8	£280.23
SPIG16-CFE2316AF	2.3/16	£280.23
SPIG16-CFE214AF	2.1/4	£280.23
SPIG16-CFE2516AF	2.5/16	£280.23
SPIG16-CFE238AF	2.3/8	£291.60
SPIG16-CFE2716AF	2.7/16	£301.32
SPIG16-CFE212AF	2.1/2	£301.32
SPIG16-CFE2916AF	2.9/16	£311.04
SPIG16-CFE258AF	2.5/8	£311.04
SPIG16-CFE21116AF	2.11/16	£311.04
SPIG16-CFE234AF	2.3/4	£320.76
SPIG16-CFE21316AF	2.13/16	£320.76
SPIG16-CFE278AF	2.7/8	£320.76
SPIG16-CFE21516AF	2.15/16	£320.76
SPIG16-CFE3AF	3	330.48
SPIG16-CFE3116AF	3.1/16	345.48
SPIG16-CFE318AF	3.1/8	345.48
SPIG16-CFE3116AF	3.1/16	345.48
SPIG16-CFE318AF	3.1/8	345.48
SPIG16-CFE3316AF	3.3/16	349.92
SPIG16-CFE314AF	3.1/4	360.48
SPIG16-CFE3516AF	3.5/16	360.48
SPIG16-CFE338AF	3.3/8	360.48
SPIG16-CFE3716AF	3.7/16	375.48
SPIG16-CFE312AF	3.1/2	375.48



22mm Spigot Crowfoot - MM

Part No.	Size mm	Price £
SPIG22-CFB7	7	£132.19
SPIG22-CFB8	8	£132.19
SPIG22-CFB9	9	£132.19
SPIG22-CFB10	10	£132.19
SPIG22-CFB11	11	£132.19
SPIG22-CFB12	12	£132.19
SPIG22-CFB13	13	£132.19
SPIG22-CFB14	14	£132.19
SPIG22-CFB15	15	£132.19
SPIG22-CFB16	16	£132.19
SPIG22-CFB17	17	£132.19
SPIG22-CFB18	18	£132.19
SPIG22-CFB19	19	£132.19
SPIG22-CFB20	20	£132.19
SPIG22-CFB21	21	£132.19
SPIG22-CFB22	22	£132.19
SPIG22-CFB23	23	£143.21
SPIG22-CFB24	24	£143.21
SPIG22-CFB25	25	£143.21
SPIG22-CFB26	26	£143.21
SPIG22-CFB27	27	£143.21
SPIG22-CFB28	28	£143.21
SPIG22-CFB30	30	£165.24
SPIG22-CFB32	32	£165.24
SPIG22-CFB34	34	£165.24
SPIG22-CFB35	35	£176.26
SPIG22-CFB36	36	£176.26
SPIG22-CFB38	38	£176.26
SPIG22-CFB41	41	£220.32
SPIG22-CFB42	42	£220.32
SPIG22-CFB43	43	£220.32
SPIG22-CFB45	45	£238.68
SPIG22-CFB46	46	£253.37
SPIG22-CFB48	48	£275.40
SPIG22-CFB50	50	£275.40
SPIG22-CFB51	51	£275.40
SPIG22-CFB55	55	£275.40
SPIG22-CFB60	60	£293.05
SPIG22-CFB65	65	£293.76
SPIG22-CFB70	70	£312.09
SPIG22-CFB75	75	£330.48
SPIG22-CFB80	80	£337.84
SPIG22-CFB85	85	£341.50
SPIG22-CFB90	90	£363.53
SPIG22-CFB95	95	£385.56
SPIG22-CFB100	100	£403.92

Part No.	Size mm	Price £
SPIG22-CFC9	9	£143.21
SPIG22-CFC10	10	£143.21
SPIG22-CFC11	11	£143.21
SPIG22-CFC12	12	£143.21
SPIG22-CFC13	13	£143.21
SPIG22-CFC14	14	£143.21
SPIG22-CFC17	17	£143.21
SPIG22-CFC19	19	£143.21
SPIG22-CFC20	20	£143.21
SPIG22-CFC21	21	£143.21
SPIG22-CFC22	22	£143.21
SPIG22-CFC24	24	£143.21
SPIG22-CFC26	26	£146.88
SPIG22-CFC27	27	£165.24
SPIG22-CFC28	28	£165.24
SPIG22-CFC30	30	£193.89
SPIG22-CFC32	32	£193.89
SPIG22-CFC34	34	£193.89
SPIG22-CFC35	35	£193.89
SPIG22-CFC36	36	£193.89
SPIG22-CFC38	38	£210.00
SPIG22-CFC40	40	£242.35
SPIG22-CFC41	41	£242.35
SPIG22-CFC42	42	£242.35
SPIG22-CFC44	44	£262.55
SPIG22-CFC45	45	£278.70
SPIG22-CFC46	46	£278.70
SPIG22-CFC48	48	£278.70
SPIG22-CFC50	50	£302.94
SPIG22-CFC52	52	£302.94
SPIG22-CFC54	54	£302.94
SPIG22-CFC55	55	£313.04
SPIG22-CFC60	60	£323.14
SPIG22-CFC65	65	£331.21
SPIG22-CFC70	70	£343.33
SPIG22-CFC75	75	£363.53
SPIG22-CFC80	80	£381.70
SPIG22-CFC85	85	£382.93
SPIG22-CFC90	90	£399.87
SPIG22-CFC95	95	£424.12
SPIG22-CFC100	100	£444.31

Part No.	Size mm	Price £
SPIG22-CFE11	11	£176.26
SPIG22-CFE12	12	£176.26
SPIG22-CFE13	13	£176.26
SPIG22-CFE14	14	£176.26
SPIG22-CFE15	15	£176.26
SPIG22-CFE16	16	£176.26
SPIG22-CFE17	17	£176.26
SPIG22-CFE19	19	£176.26
SPIG22-CFE24	24	£176.26
SPIG22-CFE26	26	£176.26
SPIG22-CFE27	27	£176.26
SPIG22-CFE30	30	£198.29
SPIG22-CFE32	32	£209.30
SPIG22-CFE34	34	£220.32
SPIG22-CFE35	35	£231.34
SPIG22-CFE36	36	£231.34
SPIG22-CFE38	38	£231.34
SPIG22-CFE41	41	£317.59
SPIG22-CFE42	42	£317.59
SPIG22-CFE43	43	£317.59
SPIG22-CFE46	46	£317.59
SPIG22-CFE48	48	£317.59
SPIG22-CFE50	50	£317.59
SPIG22-CFE51	51	£317.59
SPIG22-CFE52	52	£317.59
SPIG22-CFE55	55	£317.59
SPIG22-CFE56	56	£317.59
SPIG22-CFE60	60	£330.48
SPIG22-CFE65	65	£352.51
SPIG22-CFE70	70	£363.53
SPIG22-CFE75	75	£374.54
SPIG22-CFE80	80	£391.54
SPIG22-CFE85	85	£408.54
SPIG22-CFE90	90	£425.54
SPIG22-CFE95	95	£446.76
SPIG22-CFE100	100	£460.29
SPIG22-CFE105	105	£473.89
SPIG22-CFE110	110	£484.50
SPIG22-CFE115	115	£506.60
SPIG22-CFE120	120	£535.50
SPIG22-CFE130	130	£561.00

MM & AF available in Open, Ringed, Fland and Spigot. Crowfoot Spanners / Wrenches - Any size available, Metric, Imperial AF or BSW Whitworth. Please enquire.

22mm Spigot Crowfoot - AF

Part No.	Size mm	Price £
SPIG22-CFB316AF	3/16	£132.19
SPIG22-CFB14AF	1/4	£132.19
SPIG22-CFB516	5/16	£132.19
SPIG22-CFB38	3/8	£132.19
SPIG22-CFB716AF	7/16	£132.19
SPIG22-CFB12AF	1/2	£132.19
SPIG22-CFB916AF	9/16	£132.19
SPIG22-CFB58	5/8	£132.19
SPIG22-CFB11A16AF	11/16	£132.19
SPIG22-CFB34AF	3/4	£132.19
SPIG22-CFB13A16AF	13/16	£132.19
SPIG22-CFB78AF	7/8	£132.19
SPIG22-CFB1516AF	15/16	£143.21
SPIG22-CFB1AF	1	£143.21
SPIG22-CFB116AF	1.1/16	£143.21
SPIG22-CFB118AF	1.1/8	£154.22
SPIG22-CFB1316AF	1.3/16	£165.24
SPIG22-CFB114AF	1.1/4	£165.24
SPIG22-CFB1516AF	1.5/16	£176.26
SPIG22-CFB138AF	1.3/8	£176.26
SPIG22-CFB1716AF	1.7/16	£176.26
SPIG22-CFB112AF	1.1/2	£176.26
SPIG22-CFB1916AF	1.9/16	£176.26

Part No.	Size mm	Price £
SPIG22-CFC38AF	3/8	£143.21
SPIG22-CFC14AF	1/4	£143.21
SPIG22-CFC516	5/16	£143.21
SPIG22-CFC38	3/8	£143.21
SPIG22-CFC716AF	7/16	£143.21
SPIG22-CFC12AF	1/2	£143.21
SPIG22-CFC916AF	9/16	£143.21
SPIG22-CFC58	5/8	£143.21
SPIG22-CFC11A16AF	11/16	£143.21
SPIG22-CFC34AF	3/4	£143.21
SPIG22-CFC13A16AF	13/16	£143.21
SPIG22-CFC78AF	7/8	£143.21
SPIG22-CFC1516AF	15/16	£143.21
SPIG22-CFC1AF	1	£143.21
SPIG22-CFC116AF	1.1/16	£165.24
SPIG22-CFC118AF	1.1/8	£165.24
SPIG22-CFC1316AF	1.3/16	£193.89
SPIG22-CFC114AF	1.1/4	£193.89
SPIG22-CFC1516AF	1.5/16	£193.89
SPIG22-CFC138AF	1.3/8	£193.89
SPIG22-CFC1716AF	1.7/16	£193.89
SPIG22-CFC112AF	1.1/2	£193.89
SPIG22-CFC1916AF	1.9/16	£242.35
SPIG22-CFC158AF	1.5/8	£242.35
SPIG22-CFC11116AF	1.11/16	£262.55
SPIG22-CFC134AF	1.3/4	£278.70
SPIG22-CFC11316AF	1.13/16	£278.70
SPIG22-CFC178AF	1.7/8	£278.70
SPIG22-CFC11516AF	1.15/16	£302.94
SPIG22-CFC2AF	2	£302.94
SPIG22-CFC2116AF	2.1/16	£302.94
SPIG22-CFC218AF	2.1/8	£302.94
SPIG22-CFC2316AF	2.3/16	£313.04
SPIG22-CFC214AF	2.1/4	£276.21
SPIG22-CFC2516AF	2.5/16	£323.14
SPIG22-CFC238AF	2.3/8	£323.14
SPIG22-CFC212AF	2.1/2	£331.21
SPIG22-CFC21316AF	2.13/16	£363.53
SPIG22-CFC278AF	2.7/8	£363.53
SPIG22-CFC3AF	3	£399.87

Part No.	Size mm	Price £
SPIG22-CFE716AF	7/16	£176.26
SPIG22-CFE12AF	1/2	£176.26
SPIG22-CFE916AF	9/16	£176.26
SPIG22-CFE58AF	5/8	£176.26
SPIG22-CFE11A16AF	11/16	£176.26
SPIG22-CFE34AF	3/4	£176.26
SPIG22-CFE13A16AF	13/16	£176.26
SPIG22-CFE78AF	7/8	£176.26
SPIG22-CFE1516AF	15/16	£176.26
SPIG22-CFE1AF	1	£176.26
SPIG22-CFE116AF	1.1/16	£176.26
SPIG22-CFE118AF	1.1/8	£198.29
SPIG22-CFE1316AF	1.3/16	£198.29
SPIG22-CFE114AF	1.1/4	£209.30
SPIG22-CFE1516AF	1.5/16	£231.34
SPIG22-CFE138AF	1.3/8	£231.34
SPIG22-CFE1716AF	1.7/16	£231.34
SPIG22-CFE112AF	1.1/2	£231.34
SPIG22-CFE1916AF	1.9/16	£252.72
SPIG22-CFE158AF	1.5/8	£317.59
SPIG22-CFE11116AF	1.11/16	£317.59
SPIG22-CFE134AF	1.3/4	£317.59
SPIG22-CFE11316AF	1.13/16	£317.59
SPIG22-CFE178AF	1.7/8	£317.59
SPIG22-CFE11516AF	1.15/16	£317.59
SPIG22-CFE2AF	2	£317.59
SPIG22-CFE2116AF	2.1/16	£317.59
SPIG22-CFE218AF	2.1/8	£317.59
SPIG22-CFE2316AF	2.3/16	£317.59
SPIG22-CFE214AF	2.1/4	£317.59
SPIG22-CFE2516AF	2.5/16	£317.59
SPIG22-CFE238AF	2.3/8	£330.48
SPIG22-CFE2716AF	2.7/16	£341.46
SPIG22-CFE212AF	2.1/2	£341.46
SPIG22-CFE2916AF	2.9/16	£352.51
SPIG22-CFE258AF	2.5/8	£352.51
SPIG22-CFE21116AF	2.11/16	£352.51
SPIG22-CFE234AF	2.3/4	£363.53
SPIG22-CFE21316AF	2.13/16	£363.53
SPIG22-CFE278AF	2.7/8	£363.53
SPIG22-CFE21516AF	2.15/16	£363.53
SPIG22-CFE3AF	3	£374.54
SPIG22-CFE3116AF	3.1/16	£391.54
SPIG22-CFE318AF	3.1/8	£391.54
SPIG22-CFE3116AF	3.1/16	£391.54
SPIG22-CFE318AF	3.1/8	£391.54
SPIG22-CFE3316AF	3.3/16	£349.92
SPIG22-CFE314AF	3.1/4	£408.54
SPIG22-CFE3516AF	3.5/16	£408.54
SPIG22-CFE338AF	3.3/8	£408.54
SPIG22-CFE3716AF	3.7/16	£425.54
SPIG22-CFE312AF	3.1/2	£425.54



Stacking Sockets

Metric MM

Part No.	Size	Price £
SS2222	STACKING SOCKET 22MM - 22MM	240.00
SS2230	STACKING SOCKET 22MM - 30MM	272.00
SS22-114	STACKING SOCKET 27MM - 1.1/4AF	272.00
SS3030	STACKING SOCKET 30MM - 30MM	288.00
SS3041	STACKING SOCKET 30MM - 41MM	320.00
SS3232	STACKING SOCKET 32MM - 32MM	320.00
SS3630	STACKING SOCKET 36MM - 30MM	320.00
SS3636	STACKING SOCKET 36MM - 36MM	320.00
SS3650	STACKING SOCKET 36MM - 50MM	320.00
SS3655	STACKING SOCKET 36MM - 55MM	320.00
SS3660	STACKING SOCKET 36MM - 60MM	320.00
SS36178	STACKING SOCKET 36MM - 1.7/8MM	336.00
SS4122	STACKING SOCKET 41MM - 22MM	350.00
SS4636	STACKING SOCKET 46MM - 36MM	368.00
SS4646	STACKING SOCKET 46MM - 46MM	368.00
SS4655	STACKING SOCKET 46MM - 55MM	448.00
SS4670	STACKING SOCKET 46MM - 70MM	512.00
SS4680	STACKING SOCKET 46MM - 80MM	576.00
SS5536	STACKING SOCKET 55MM - 36MM	384.00
SS5546	STACKING SOCKET 55MM - 46MM	384.00
SS5555	STACKING SOCKET 55MM - 55MM	384.00
SS5565	STACKING SOCKET 55MM - 65MM	400.00
SS5566	STACKING SOCKET 55MM - 66MM	416.00
SS5570	STACKING SOCKET 55MM - 70MM	432.00
SS5575	STACKING SOCKET 55MM - 75MM	448.00
SS5580	STACKING SOCKET 55MM - 80MM	464.00
SS6060	STACKING SOCKET 60MM - 60MM	384.00
SS6536	STACKING SOCKET 65MM - 36MM	400.00
SS6545	STACKING SOCKET 65MM - 45MM	416.00
SS6546	STACKING SOCKET 65MM - 46MM	432.00
SS6565	STACKING SOCKET 65MM - 65MM	464.00
SS7075	STACKING SOCKET 70MM - 75MM	448.00
SS7070	STACKING SOCKET 70MM - 70MM	480.00
SS7555	STACKING SOCKET 75MM - 55MM	464.00
SS8565	STACKING SOCKET 85MM - 65MM	496.00
SS8575	STACKING SOCKET 85MM - 75MM	512.00
SS8585	STACKING SOCKET 85MM - 85MM	528.00
SS10055	STACKING SOCKET 100MM - 55MM	576.00

Imperial AF

Part No.	Size	Price £
SS2-1	STACKING SOCKET 2" - 1"	352.00
SS2-2	STACKING SOCKET 2" - 2"	352.00
SS2-2316	STACKING SOCKET 2" - 2.3/16"	352.00
SS2-238	STACKING SOCKET 2" - 2.3/8"	352.00
SS2316-11316	STACKING SOCKET 2.3/16" - 1.13/16"	368.00
SS2316-2F	STACKING SOCKET 2.3/16" - 2"	368.00
SS2316-2316	STACKING SOCKET 2.3/16" - 2.3/16"	368.00
SS2316-2916	STACKING SOCKET 2.3/16" - 2.9/16"	368.00
SS2316-21516	STACKING SOCKET 2.3/16" - 2.15/16"	368.00
SS2916-2916	STACKING SOCKET 2.9" - 2.9/16"	400.00
SS234438	STACKING SOCKET 2.3/4" - 4.3/8"	480.00
SS32	STACKING SOCKET 3" - 2"	496.00
SS318238	STACKING SOCKET 3.1/8" - 2.3/8"	512.00
SS378-378	STACKING SOCKET 3.7/8AF - 3.7/8AF	576.00
SS458AF	STACKING SOCKET 4.5/8" - 4.5/8"	592.00



DESIGN YOUR OWN SOCKET/CROWFOOT SET

We can design your own personalised Socket Set/Crowfoot Spanner Set then it could not be easier.

Simply send us a list of all the Deltec Impact Sockets, Accessories or Crowfoot Spanners you require to sales@deltecindustries.co.uk, or alternatively we can send you an enquiry form with the options available and we will get back to you with a design and price.

Our sales team will respond to you with a price and optional extras that are available to you. Once agreed, we will go ahead and create the design for your bespoke set. In no time at all you will be the proud owner of your very own custom Deltec Set.

Contact Deltec today if you would like to speak to our experts regarding our bespoke Sockets Sets.

BOXED SETS

£56.55

1/4" DRIVE 16PC BOXED SET

11pc Std - 4, 4.5, 5, 5.5, 6, 7, 8, 9, 10, 11, 12, 13mm
1 pc Ratchet Handle, 1 Flexible Handle
2 pc Extension Bars 2" & 6"
1 pc Sliding T Bar 4"

£96.30

3/8" DRIVE 24PC BOXED SET

17pcs std - 6, 7, 8, 9, 10, 11, 12, 13, 14, 15, 16, 17, 18, 19, 20, 21, 22mm
1 pc Sliding T Bar
1 pc Ratchet Handle
2 pcs Extension Bars 3" & 6"
2 pcs Spark Plug Sockets 16 & 21mm
1 pc Universal Joint

£115.92

1/2" DRIVE 17PC BOXED SET

14pcs std - 10, 11, 12, 13, 14, 15, 16, 17, 18, 19, 20, 21, 22, 24, 27mm
1 pc Extension Bar 5"
1 pc Flexible Handle
1 pc Ratchet Handle

£90.72

1/4" DRIVE 45PC BOXED SET

13pc Std - 4, 4.5, 5, 5.5, 6, 7, 8, 9, 10, 11, 12, 13, 14mm
6 pc torx E4, E5, E6, E7, E8, E10
1 pc Ratchet Handle, 1 pc Universal Joint
3 pc Extension Bars 2", 1 pc Spinner Handle
1 pc Sliding T Bar 4", Hex Bits, Pozi, Philips

£151.38

1/2" DRIVE 29PC BOXED SET

18pc Std - 10, 11, 12, 13, 14, 15, 16, 17, 18, 19, 20, 21, 22, 23, 24, 27, 30, 32mm
4 pc deep 10, 13, 17, 19 mm
1 pc Universal Joint, 1 pc Ratchet Handle
2 pc Spark Plug Sockets 16 & 21mm
2 pc Extension Bars 5" & 10"
1 pc Sliding T Bar



Impact Boxed Sets

SET B1

1/2" SQ. DR. 9 PIECE MALE HEXAGON DRIVER METAL BOXED SET

4, 5, 6, 8, 10, 12, 14, 17 and 19mm

£67.50

SET B2

1/2" SQ. DR. 9 PIECE MALE HEXAGON DRIVER METAL BOXED SET

3/16, 7/32, 1/4, 5/16, 3/8, 7/16, 1/2, 9/16 and 5/8AF

£67.50

SET B3

1/2" SQ. DR. STD SET

8, 10, 11, 12, 13, 14, 16, 17, 19, 21, 22, 24, 27, 30mm

£52.65

SET B4

1/2" SQ. DR. 10 PIECE DEEP IMPACT SOCKETS METAL BOXED SETS

10, 11, 13, 14, 17, 19, 21, 22, 24 and 27mm

£68.69

SET B4

3/4" SQ. DR. 6 PIECE DEEP IMPACT SOCKETS METAL BOXED SET

24, 27, 30, 32, 33 and 36mm

£131.65

SET E9L

3/4" SQ. DR. 9 PIECE DEEP IMPACT SOCKETS METAL BOXED SET

24, 27, 30, 32, 33, 36, 38, 41 and 46mm

£188.89

SET F4L

1" SQ. DR. 4 PIECE DEEP IMPACT SOCKETS METAL BOXED SET

27mm, 30mm, 32mm and 33mm

£91.58

SET F5L

1" SQ. DR. 5 PIECE DEEP IMPACT SOCKETS METAL BOXED SET

24mm, 27mm, 30mm, 32mm and 33mm

£160.27

SET F8L

1" SQ. DR. 8 PIECE DEEP IMPACT SOCKETS METAL BOXED SET

24, 27, 29, 30, 32, 33, 36 & 38mm

£183.17

LOOSE SOCKETS FOR THE SETS

Part No.	Description	Price £
SETC10	Socket Set - 1/2 x 10mm std	£3.51
SETC11	Socket Set - 1/2 x 11mm std	£3.51
SETC12	Socket Set - 1/2 x 12mm std	£3.51
SETC13	Socket Set - 1/2 x 13mm std	£3.51
SETC14	Socket Set - 1/2 x 14mm std	£3.51
SETC15	Socket Set - 1/2 x 15mm std	£3.51
SETC16	Socket Set - 1/2 x 16mm std	£3.51
SETC17	Socket Set - 1/2 x 17mm std	£3.51
SETC18	Socket Set - 1/2 x 18mm std	£3.51
SETC19	Socket Set - 1/2 x 19mm std	£3.51
SETC20	Socket Set - 1/2 x 20mm std	£3.78
SETC21	Socket Set - 1/2 x 21mm std	£4.27
SETC22	Socket Set - 1/2 x 22mm std	£4.59
SETC23	Socket Set - 1/2 x 23mm std	£4.59
SETC24	Socket Set - 1/2 x 24mm std	£5.72
SETC27	Socket Set - 1/2 x 27mm std	£6.48
SETC30	Socket Set - 1/2 x 30mm std	£8.10



Part No.	Description	Price £
SETC32	Socket Set - 1/2 x 32mm std	£8.51
SETC10L	Socket Set - 1/2 x 10mm Deep	£5.35
SETC13L	Socket Set - 1/2 x 13mm Deep	£5.35
SETC17L	Socket Set - 1/2 x 17mm Deep	£5.35
SETC19L	Socket Set - 1/2 x 19mm Deep	£5.35
SETCSS16	Socket Set - Spark Plug 16mm	£5.56
SETCSS21	Socket Set - Spark Plug 21mm	£8.64
SETCEXT	Socket Set - 1/2 x 5" Extension Bar	£7.56
SETCEXT10	Socket Set - 1/2 x 10" Extension Bar	£12.94
SETCUJ	Socket Set - 1/2 Universal Joint	£9.67
SETCTBAR	Socket Set - 1/2 Sliding T Bar	£11.83

All of the above available in Thinwall and Bi-Hexagon. Please enquire.

Metric MM

Part No.	MM	Price £
FS17	17	21.60
FS18	18	48.60
FS19	19	21.60
FS20	20	43.20
FS21	21	43.20
FS22	22	21.60
FS24	24	21.60
FS26	26	51.84
FS27	27	21.60
FS30	30	21.60
FS32	32	23.76
FS33	33	26.95
FS36	36	27.00
FS38	38	32.40
FS41	41	34.56
FS46	46	38.88
FS50	50	43.20
FS51	51	43.15
FS54	54	51.57
FS55	55	51.84
FS60	60	64.75
FS65	65	77.76
FS70	70	88.56
FS75	75	88.56
FS80	80	129.60
FS85	85	135.00
FS90	90	171.72
FS95	95	183.60

Part No.	MM	Price £
FS100	100	226.75
FS105	105	237.60
FS110	110	291.60
FS115	115	297.00
FS120	120	410.40
FS125	125	518.40
FS130	130	561.60
FS135	135	604.80
FS140	140	648.00
FS145	145	702.00
FS150	150	777.60
FS155	155	927.00
FS160	160	960.00
FS165	165	1020.00
FS170	170	1237.00
FS175	175	1348.00
FS180	180	1467.00
FS185	185	1518.00
FS190	190	1615.00
FS195	195	1645.00
FS200	200	1677.00
FS205	205	1734.00
FS210	210	1788.00
FS215	215	2017.00
FS220	220	2217.00
FS225	225	2540.00
FS230	230	2757.00

Imperial AF

Part No.	AF	Price £
FS78AF	7/8	21.60
FS24	15/16	21.60
FS1AF	1	21.60
FS27	1.1/16	21.60
FS118AF	1.1/8	23.76
FS30	1.3/16	21.60
FS32	1.1/4	23.76
FS1516AF	1.5/16	27.00
FS35	1.3/8	27.00
FS1716AF	1.7/16	29.16
FS38	1.1/2	32.40
FS1916AF	1.9/16	34.56
FS41	1.5/8	34.56
FS43	1.11/16	38.88
FS134AF	1.3/4	38.88
FS46	1.13/16	38.88
FS178	1.7/8	42.12
FS51	2	47.52
FS2116AF	2.1/16	49.68
FS218AF	2.1/8	49.68
FS2316AF	2.3/16	51.84
FS214AF	2.1/4	59.40
FS2516AF	2.5/16	59.40
FS60	2.3/8	64.75
FS2716AF	2.7/16	69.12
FS212AF	2.1/2	73.44
FS65	2.9/16	77.76
FS258AF	2.5/8	81.00

Part No.	AF	Price £
FS70	2.3/4	88.56
FS21316AF	2.13/16	95.04
FS278AF	2.7/8	99.36
FS21516AF	2.15/16	102.60
FS3AF	3	113.40
FS318AF	3.1/8	129.60
FS314AF	3.1/4	162.00
FS338AF	3.3/8	183.60
FS312AF	3.1/2	194.40
FS358AF	3.5/8	205.20
FS95	3.3/4	216.00
FS378AF	3.7/8	237.60
FS4AF	4	270.00
FS418AF	4.1/8	291.60
FS414AF	4.1/4	307.80
FS412AF	4.1/2	345.60
FS458AF	4.5/8	378.00
FS434AF	4.3/4	399.60
FS5AF	5	518.40
FS518AF	5.1/8	583.20
FS538AF	5.3/8	626.40
FS512AF	5.1/2	691.20
FS534AF	5.3/4	691.20
FS6AF	6	815.40



We have manufactured up to 300mm Sloggers. If you need bigger or different sizes. Please enquire.

Combination Spanners

Metric MM

Part No.	Size	Price £
CS6	6	3.22
CS7	7	3.22
CS8	8	3.22
CS9	9	3.22
CS10	10	3.40
CS11	11	3.89
CS12	12	3.71
CS13	13	3.89
CS14	14	4.33
CS15	15	4.67
CS16	16	5.42
CS17	17	5.54
CS18	18	6.03
CS19	19	6.72
CS20	20	8.05
CS21	21	8.30
CS22	22	8.32
CS23	23	9.25
CS24	24	9.75
CS25	25	10.98
CS26	26	11.66
CS27	27	12.07
CS28	28	13.86
CS30	30	16.37
CS32	32	16.47
CS33	33	29.09
CS34	34	29.09
CS36	36	35.59
CS38	38	41.85
CS41	41	42.01
CS46	46	63.15
CS50	50	63.53
CS55	55	80.88
CS60	60	96.84
CS65	65	106.20
CS70	70	117.33
CS75	75	128.52
CS80	80	154.44
CS85	85	210.60
CS90	90	210.60
CS95	95	226.80
CS100	100	248.40
CS105	105	280.80
CS110	110	313.20
CS115	115	351.00
CS120	120	383.40
CS125	125	426.60

Imperial AF

Part No.	Size	Price £
CS14AF	1/4	3.08
CS516AF	5/16	3.74
CS38AF	3/8	3.74
CS716AF	7/16	3.74
CS12AF	1/2	3.89
CS916AF	9/16	4.67
CS58AF	5/8	5.31
CS1116AF	11/16	5.57
CS34	3/4	6.72
CS1316	13/16	8.30
CS78	7/8	8.60
CS1516AF	15/16	9.75
CS1	1	11.08
CS1116AF	1.1/16	12.07
CS118	1.1/8	14.73
CS1316AF	1.3/16	16.37
CS114AF	1.1/4	16.47
CS1516AF	1.5/16	29.09
CS138AF	1.3/8	35.59
CS1716AF	1.7/16	38.38
CS112AF	1.1/2	44.01
CS158AF	1.5/8	48.37
CS11116AF	1.11/16	49.03
CS134AF	1.3/4	62.48
CS11316AF	1.13/16	63.15
CS178AF	1.7/8	75.65
CS2AF	2	76.36
CS2116AF	2.1/16	97.17
CS218AF	2.1/8	93.54
CS2316AF	2.3/16	96.55
CS214AF	2.1/4	116.28
CS2716AF	2.7/16	127.73
CS212AF	2.1/2	145.80
CS2916AF	2.9/16	178.20
CS258AF	2.5/8	189.00
CS234AF	2.3/4	216.00
CS278AF	2.7/8	232.20
CS3AF	3	243.00
CS318AF	3.1/8	264.60
CS312AF	3.1/2	272.16
CS378AF	3.7/8	295.00



Ratcheting available, please enquire.



Metric MM

Part No.	Size	Price £
894-6	6mm	2.48
894-7	7mm	2.48
894-8	8mm	2.48
894-9	9mm	2.54
894-10	10mm	2.67
894-11	11mm	2.70
894-12	12mm	2.92
894-13	13mm	2.92
894-14	14mm	3.10
894-15	15mm	3.96
894-16	16mm	3.97
894-17	17mm	4.21
894-18	18mm	6.67
894-19	19mm	12.96
894-22	22mm	13.50
894-24	24mm	15.12
894-25	25mm	16.20
894-27	27mm	17.28
894-30	30mm	19.44
894-32	32mm	21.60
894-36	36mm	23.76
894-38	38mm	25.92
894-41	41mm	27.00
894-46	46mm	32.40
894-50	50mm	43.20
894-55	55mm	59.40
894-60	60mm	70.20
894-65	65mm	84.24
894-70	70mm	97.20
894-75	75mm	129.60
894-80	80mm	151.20
894-85	85mm	172.80
894-90	90mm	194.40
894-95	95mm	216.00
894-100	100mm	237.60
894-105	105mm	333.61
894-110	110mm	408.94
894-115	115mm	477.74
894-120	120mm	505.55
894-125	125mm	632.72
894-130	130mm	652.70
894-135	135mm	731.53
894-140	140mm	733.32
894-145	145mm	745.20
894-150	150mm	777.60



**We also stock AF - Imperial Spanners.
Please enquire for prices.**

We can also manufacture these out of other materials. Stainless Steel, Copper Beryllium, Aluminium Bronze.

Hexagon Reducing Bushes

Metric MM

Part No.	Outside	Inside	Price £
HRB3024	30	24	183.60
HRB3630	36	30	183.60
HRB4136	41	36	183.60
HRB4636	46	36	183.60
HRB4641	46	41	183.60
HRB5041	50	41	194.40
HRB5046	50	46	194.40
HRB5541	55	41	197.50
HRB5546	55	46	197.50
HRB5550	55	50	197.50
HRB6046	60	46	197.50
HRB6050	60	50	197.50
HRB6055	60	55	197.50
HRB6550	65	50	199.60
HRB6555	65	55	199.60
HRB6560	65	60	199.60
HRB7055	70	55	210.00
HRB7060	70	60	210.00
HRB7065	70	65	210.00
HRB7560	75	60	210.00
HRB7565	75	65	210.00
HRB7570	75	70	210.00
HRB8065	80	65	248.40
HRB8070	80	70	248.40
HRB8075	80	75	248.40
HRB8570	85	70	248.40
HRB8575	85	75	259.20
HRB8580	85	80	259.20
HRB9075	90	75	259.20
HRB9080	90	80	260.00
HRB9085	90	85	260.00
HRB9580	95	80	280.00
HRB9585	95	85	280.00
HRB9590	95	90	280.00
HRB10085	100	85	313.20
HRB10090	100	90	313.20
HRB10095	100	95	313.20
HRB10590	105	90	313.20
HRB10595	105	95	313.20
HRB105100	105	100	313.20
HRB11095	110	95	340.00
HRB110100	110	100	340.00
HRB110105	110	105	340.00
HRB115100	115	100	340.00
HRB115105	115	105	340.00
HRB115110	115	110	340.00
HRB130105	130	105	390.00
HRB130110	130	110	390.00
HRB130115	130	115	390.00

Imperial AF

Part No.	Outside	Inside	Price £
HRB1141116	1.1/4	1.1/16	183.60
HRB17161116	1.7/16	1.1/16	183.60
HRB1716114	1.7/16	1.1/4	183.60
HRB158114	1.5/8	1.1/4	183.60
HRB1581716	1.5/8	1.7/16	183.60
HRB113161716	1.3/16	1.7/16	194.40
HRB11316158	1.3/16	1.5/8	194.40
HRB2158	2	1.5/8	194.40
HRB211316	2	1.13/16	194.40
HRB2316158	2.3/16	1.5/8	197.50
HRB231611316	2.3/16	1.13/16	197.50
HRB23162	2.3/16	2	197.50
HRB23811316	2.3/8	1.13/16	197.50
HRB2382	2.3/8	2	197.50
HRB2382316	2.3/8	2.3/16	197.50
HRB29162	2.9/16	2	199.60
HRB2916216	2.9/16	2.3/16	199.60
HRB2916238	2.9/16	2.3/8	199.60
HRB2342316	2.3/4	2.3/16	210.00
HRB234238	2.3/4	2.3/8	210.00
HRB2342916	2.3/4	2.9/16	210.00
HRB21516234	2.15/16	2.3/8	210.00
HRB215162916	2.15/16	2.9/16	210.00
HRB21516234	2.15/16	2.3/4	210.00
HRB31821516	3.1/8	2.9/16	248.40
HRB318234	3.1/8	2.3/4	248.40
HRB31821516	3.1/8	2.15/16	248.40
HRB31221516	3.1/2	2.15/16	259.00
HRB312318	3.1/2	3.1/8	260.00
HRB378318	3.7/8	3.1/8	313.20
HRB378312	3.7/8	3.1/2	313.20
HRB414312	4.1/4	3.1/2	340.00
HRB414378	4.1/4	3.7/8	340.00
HRB458378	4.5/8	3.7/8	340.00
HRB458414	4.5/8	4.1/4	340.00
HRB5414	5	4.1/4	390.00
HRB5458	5	4.5/8	390.00
HRB538458	5.3/8	4.5/8	425.00
HRB5385	5.3/8	5	425.00
HRB5345	5.3/4	5	445.00
HRB534538	5.3/4	5.3/8	445.00



Any size can be manufactured - Please contact Deltec if the size you require is not listed.

Tape Measures

Part No.	Description	Price £
DANNY5	5m Danny Tape - Box of 12	£48.00
DANNY8	8m Danny Tape - Box of 6	£49.68

Hammers

Part No.	Description	Price £
BP14	1/4lb Ball Pein Hickory	£10.66
BP12	1/2lb Ball Pein Hickory	£11.16
BP34	3/4lb Ball Pein Hickory	£11.31
BP1	1lb Ball Pein Hickory	£14.61
BP15	1.1/2lb Ball Pein Hickory	£19.22
BP2	2lb Ball Pein Hickory	£22.90
BP3	3lb Ball Pein Hickory	£29.16
CH16	16oz Claw Hammer Fibreglass	£12.28
CH20	20oz Claw Hammer Fibreglass	£14.50
BPF2	Ball Pein FG 2lb	£18.68
BPF25	Ball Pein FG 2.5lb	£21.56
BPF3	Ball Pein FG 3lb	£24.02

Pipe Wrench

Part No.	Description	Price £
PW10	Pipe Wrench Stilson 10" Long	£8.95
PW12	Pipe Wrench Stilson 12" Long	£10.61
PW14	Pipe Wrench Stilson 14" Long	£12.31
HDPW10	Heavy Duty Pipe Wrench 10"	£15.81
HDPW12	Heavy Duty Pipe Wrench 12"	£18.22
HDPW14	Heavy Duty Pipe Wrench 14"	£18.44
HDPW18	Heavy Duty Pipe Wrench 18"	£33.71
HDPW24	Heavy Duty Pipe Wrench 24"	£70.69
HDPW36	Heavy Duty Pipe Wrench 36"	£133.42
HDPW48	Heavy Duty Pipe Wrench 48"	£180.19

Ratchets

Part No.	Description	Price £
RATCHETA	Ratchets 1/4"	£28.33
RATCHETB	Ratchets 3/8"	£29.78
RATCHETC	Ratchets 1/2"	£37.29
RATCHETE	Ratchets 3/4"	£157.41
RATCHETF	Ratchets 1"	£270.97

Adjustable Wrench

Part No.	Description	Price £
AW8	Adjustable Wrenches 8"	£22.22

Crowbars

Part No.	Description	Price £
CB120032	Crowbar 4ft x 1.1/4" Chisel & Point	£45.65
CB150032	Crowbar 5ft x 1.1/4" Chisel & Point	£49.50
CB180032	Crowbar 6ft x 1.1/4" Chisel & Point	£54.97

CROWBAR



RATCHETS



PIPE WRENCH



TAPE MEASURE



ADJUSTABLE WRENCH



HAMMER



G Clamps

Part No.	Description	Price £
GC3	G Clamp 3"	£10.91
GC6	G Clamp 6"	£19.76
GC8	G Clamp 8"	£29.52
GC10	G Clamp 10"	£41.15

Lump & Sledge Hammers

Part No.	Description	Price £
PSL25	Lump Hammer Fibre Glass 2.5lb	£16.52
PSL4	Lump Hammer Fibre Glass 4lb	£20.70
PSL4-18	Lump Hammer Fibre Glass 4lb - 18" Shaft	£24.65
PSLH25	Lump Hammer Hickory 2.5lb	£18.44
PSLH4	Lump Hammer Hickory 4lb	£23.36
PSLH4-18	Lump Hammer Hickory 4lb- 18" Shaft	£28.22
PSSH7	Sledge Hammer Hickory 7lb	£44.36
PSSH10	Sledge Hammer Hickory 10lb	£55.91
PSSH12	Sledge Hammer Hickory 12lb	£62.07
PSSH14	Sledge Hammer Hickory 14lb	£67.93
PSS7	Sledge Hammer Fibre Glass 7lb	£38.12
PSS10	Sledge Hammer Fibre Glass 10lb	£47.09
PSS12	Sledge Hammer Fibre Glass 12lb	£53.24
PSS14	Sledge Hammer Fibre Glass 14lb	£59.94

Spirit Levels

Part No.	Description	Price £
SL24	Spirit Levels 24"	£11.80
SL36	Spirit Levels 36"	£15.33
SL48	Spirit Levels 48"	£19.37

Axes

Part No.	Description	Price £
AXEF15	Axe Fibre Glass 1.5lb	£20.44
AXEF45	Axe Fibre Glass 4.5lb	£40.36
AXEH15	Axe Hickory 1.5lb	£22.36
AXEH45	Axe Hickory 4.5lb	£52.27

Knives

Part No.	Description	Price £
KN007	Auto Change Knife	£15.04

Screwdriver Sets

Part No.	Description	Price £
SDINS6	Screwdriver Set 6 pc Insulated	£14.67
SD7	Screwdriver Set 7 pc	£15.11

Dead Blow Hammers

Part No.	Description	Price £
DBH1	Dead Blow Hammer 1lb	£15.98
DBH15	Dead Blow Hammer 1.1/2lb	£16.99
DBH2	Dead Blow Hammer 2lb	£20.12
DBH3	Dead Blow Hammer 3lb	£25.92

Pliers

Part No.	Description	Price £
DDP7	Diagonal Cutting Pliers 7"	£11.26
DCP7	Combination Pliers 7"	£12.85
DCP8	Combination Pliers 8"	£12.42
LNP8	Long Nose Pliers 8"	£8.75
BNP7	Bent Nose Pliers 7"	£13.23
CPINCERS8	Carpentry Pincers 8"	£13.23
WPP10	Water Pump Pliers 10"	£14.66
WPP12	Water Pump Pliers 12"	£16.28
DCC10	Deltec Cable Cutters 10"	£13.42
DCC18	Deltec Cable Cutters 18"	£44.66
HDPW36	Heavy Duty Pipe Wrench Stilsons 36"	£133.42
HDPW48	Heavy Duty Pipe Wrench Stilsons 48"	£180.19
DLP	Deltec Locking Pliers	£15.68
DASRC	Deltec Aviation Snips Right Cut 10"	£13.42
DASSC	Deltec Aviation Snips Straight Cut 10"	£13.42
DASLC	Deltec Aviation Snips Left Cut 10"	£13.42
DTP	Deltec Tower Pincers 10"	£12.53

Bolt Cutters

Part No.	Description	Price £
BC12	12" Bolt Cutters	£25.70
BC14	14" Bolt Cutters	£31.75
BC18	18" Bolt Cutters	£38.66
BC24	24" Bolt Cutters	£53.60
BC30	30" Bolt Cutters	£74.70
BC36	36" Bolt Cutters	£92.66
BCA24	24" Angular Bolt Cutters	£67.28
HTBC14	High Tensile Bolt Cutters 14"	£36.72
HTBC18	High Tensile Bolt Cutters 18"	£47.34
HTBC24	High Tensile Bolt Cutters 24"	£65.42
HTBC30	High Tensile Bolt Cutters 30"	£91.51
HTBC36	High Tensile Bolt Cutters 36"	£113.04
HTBC42	High Tensile Bolt Cutters 42"	£175.86
BCEC24	End Cut Bolt Cutters 24"	£97.74

PLIERS



LUMP HAMMERS



KNIVES



DEAD BLOW HAMMERS



SPIRIT LEVELS



BOLT CUTTERS



AXES



Bolt Sizes Chart

Metric	Head Size	Metric	Head Size	Imperial	Head Size	Imperial	Head Size
M5	8mm	M64	95mm	1/8	1/8 BSW	1.7/8	1.7/8 BSW
M6	10mm	M68	100mm	3/16	3/16 BSW	2.1/8	2.1/8 BSW
M7	11mm	M72	105mm	1/4	1/4 BSW	2.1/4	2.1/4 BSW
M8	13mm	M76	110mm	5/16	5/16 BSW	2.1/2	2.1/2 BSW
M10	17mm	M80	115mm	3/8	3/8 BSW	2.5/8	2.5/8 BSW
M12	19mm	M85	120mm	7/16	7/16 BSW	2.3/4	2.3/4 BSW
M16	25mm			1/2	1/2 BSW	3	3 BSW
M18	28mm			9/16	9/16 BSW	3.1/4	3.1/4 BSW
M20	30mm			5/8	5/8 BSW	3.3/4	3.3/4 BSW
M22	33mm			11/16	11/16 BSW	3.1/2	3.1/2 BSW
M24	36mm			3/4	3/4 BSW	3.3/4	3.3/4 BSW
M27	41mm			13/16	13/16 BSW	3.7/8	3.7/8 BSW
M30	46mm			7/8	7/8 BSW	4	4 BSW
M33	50mm			15/16	15/16 BSW	4.1/4	4.1/4 BSW
M36	55mm			1	1 BSW	4.1/2	4.1/2 BSW
M39	60mm			1.1/16	1.1/16 BSW	4.3/4	4.3/4 BSW
M42	65mm			1.1/8	1.1/8 BSW	5	5 BSW
M45	70mm			1.1/4	1.1/4 BSW	5.1/4	5.1/4 BSW
M48	75mm			1.3/8	1.3/8 BSW	5.1/2	5.1/2 BSW
M52	80mm			1.1/2	1.1/2 BSW	5.5/8	5.5/8 BSW
M56	85mm			1.5/8	1.5/8 BSW	5.3/4	5.3/4 BSW
M60	90mm			1.3/4	1.3/4 BSW	6	6 BSW

Dual Markings

Metric - MM	Imperial - AF	BSW - Whit
19	3/4	
24	15/16	
27	1.1/16	
28		5/8
30	1.3/16	
32	1.1/4	
33		3/4
35	1.3/8	
38	1.1/2	
40		15/16
41	1.5/8	
43	1.11/16	
45		1.1/16
46	1.13/16	
47		1.1/8
51	2	
52		1.1/4
54	2.1/8	
60	2.3/8	
65	2.9/16	
70	2.3/4	1.3/4
76	3	
95	3.3/4	
105	4.1/8	

Rings & Pins

Sq Dr.	MM	Code	ID of Ring	Ring Diameter	Pin Diameter	Pin Length
1/2"	6 - 14mm	C20	20mm	4mm	3mm	19mm
1/2"	15 - 14mm	C25	25mm	4mm	3mm	24mm
3/4"	14 - 47mm	E35	35mm	5mm	4mm	34mm
1"	19 - 70mm	F44	44mm	7mm	5mm	44mm
1"	75 - 115mm	F75	75mm	7mm	5mm	74mm
1.1/2"	95 - 150mm	F84	84mm	10mm	6mm	83mm
1.1/2"	38 - 150mm	H110	110mm	10.5mm	8mm	109mm

Sq Dr.	AF	Code	ID of Ring	Ring Diameter	Pin Diameter	Pin Length
1/2"	9/16 - 11/16	C20	20mm	4mm	3mm	19mm
1/2"	13/16 - 7/8	C25	27mm	4mm	3mm	26mm
3/4"	1 - 1.5/8	E32	32mm	4mm	3mm	31mm
3/4"	1.1/16 - 1.15/16	E35	35mm	5mm	4mm	34mm
1"	3/4 - 1.11/16	F44	43mm	7mm	5mm	42mm
1"	1.3/4 - 2.1/8	F48	48mm	7mm	5mm	47mm
1"	2.15/16 - 4	F75	75mm	7mm	5mm	74mm
1.1/2"	3.3/4 - 6	G84	84mm	10mm	6mm	83mm
2.1/2"	1.1/2 - 6	H110	110mm	10.5mm	8mm	109mm

One piece retaining rings available, please enquire.

Hex Size Chart

Size	Tolerance		Size	Tolerance		Size	Tolerance		Size	Tolerance	
	Min	Max		Min	Max		Min	Max		Min	Max
3mm	3.02	3.00	28mm	28.08	28.58	54mm	54.10	54.70	4"	101.75	102.75
1/8"	3.19	3.08	5/8 BSW	28.11	28.61	55mm	55.12	55.92	4.1/16"	103.33	104.33
4mm	4.02	3.25	1.1/8"	28.65	29.15	2.3/16"	55.68	56.48	4.1/8"	104.92	105.92
3/16"	4.78	4.12	29mm	29.08	29.58	56mm	56.12	56.92	105mm	105.20	106.40
5mm	5.05	4.88	30mm	30.08	30.58	1.3/8 BSW	56.51	57.31	2.3/4 BSW	106.38	107.58
6mm	6.03	5.12	1.3/16"	30.24	30.74	57mm	57.12	57.90	4.3/16"	106.56	107.76
1/4"	6.38	6.15	11/16 BSW	30.56	31.06	2.1/4"	57.27	58.07	4.1/4"	108.15	109.35
7mm	7.03	6.50	31mm	31.08	31.58	2.5/16"	58.85	59.65	4.5/16"	109.73	110.93
5/16"	7.96	7.15	1.1/4"	31.83	32.33	60mm	60.12	60.92	110mm	110.20	111.40
8mm	8.03	8.11	32mm	32.08	32.58	2.3/8"	60.44	61.24	4.3/8"	111.32	112.52
1/8 BSW	8.62	8.18	33mm	33.08	33.58	1.1/2 BSW	61.33	62.13	4.7/16"	112.91	114.11
9mm	9.03	8.77	3/4 BSW	33.10	33.60	2.7/16"	62.03	62.83	4.1/2"	114.50	115.70
3/8"	9.55	9.18	1.5/16"	33.41	33.91	2.1/2"	63.62	64.42	115mm	115.20	116.40
10mm	10.04	9.70	34mm	34.08	34.58	65mm	65.12	65.92	3 BSW	115.27	116.47
11mm	11.04	10.24	1.3/8"	35.00	35.50	2.9/16"	65.20	66.00	4.9/16"	116.08	117.28
7/16"	11.15	11.24	35mm	35.08	35.58	1.5/8 BSW	65.65	66.45	4.5/8"	117.67	118.87
3/16 BSW	11.34	11.35	13/16 BSW	35.39	35.89	2.5/8"	66.79	67.59	4.11/16"	119.26	120.46
12mm	12.04	11.54	36mm	36.10	36.70	2.11/16"	68.38	69.18	120mm	120.20	121.40
1/2"	12.74	12.30	1.7/16"	36.61	37.22	2.3/4"	69.97	70.77	4.3/4"	120.85	122.05
13mm	13.04	13.30	7/8 BSW	37.69	38.29	70mm	70.12	70.92	4.13/16"	122.43	123.63
1/4 BSW	13.38	13.64	38mm	38.10	38.70	1.3/4 BSW	70.22	71.02	3.1/4 BSW	123.52	124.72
14mm	14.05	14.35	1.1/2"	38.20	38.80	2.13/16"	71.55	72.35	4.7/8"	124.02	125.22
9/16"	14.33	14.63	1.9/16"	39.78	40.38	73mm	73.12	73.92	125mm	152.20	126.40
15mm	15.05	15.35	40mm	40.10	40.70	2.7/8"	73.14	73.94	4.15/16"	125.61	126.81
5/16 BSW	15.29	15.59	15/16 BSW	40.25	40.85	2.15/16"	74.73	75.53	5"	127.20	128.40
5/8"	15.92	16.22	41mm	41.10	41.70	75mm	75.15	76.15	5.1/16"	128.78	129.98
16mm	16.05	16.35	1.5/8"	41.37	41.97	3"	76.35	77.35	130mm	130.20	131.40
17mm	17.05	17.40	42mm	42.10	42.70	77mm	77.15	78.15	5.1/8"	130.37	131.57
11/16"	17.51	17.86	1 BSW	42.52	43.12	3.1/8"	79.52	80.52	3.1/2 BSW	131.78	132.98
18mm	18.05	18.40	1.11/16"	42.96	43.56	80mm	80.15	81.15	5.3/16"	131.96	133.16
3/8 BSW	18.08	18.43	43mm	43.10	43.70	2 BSW	80.16	81.16	5.1/4"	133.55	134.75
19mm	19.06	19.46	44mm	44.10	44.70	3.3/16"	81.11	82.11	5.5/16"	135.13	136.33
3/4"	19.11	19.51	1.3/4"	44.55	45.15	3.1/4"	82.70	83.70	135mm	135.20	136.40
20mm	20.06	20.46	45mm	45.10	45.70	3.5/16"	84.28	85.28	5.3/8"	136.72	137.92
13/16"	20.69	21.09	46mm	46.10	46.70	85mm	85.15	86.15	5.7/16"	138.31	139.51
7/16 BSW	20.89	21.29	1.13/16"	46.13	46.73	3.3/8"	85.87	86.87	5.1/2"	139.90	141.10
21mm	21.06	21.46	47mm	47.10	47.70	3.7/16"	87.46	88.46	140mm	140.20	141.10
22mm	22.05	22.46	1.1/8 BSW	47.34	47.94	3.1/2"	89.05	90.05	3.3/4 BSW	141.30	142.50
7/8"	22.28	22.68	1.7/8	47.72	48.32	90mm	90.15	91.15	5.9/16"	141.48	142.68
23mm	23.06	23.46	48mm	48.10	48.70	2.1/4 BSW	90.15	91.15	5.5/8"	143.07	144.27
1/2 BSW	23.43	23.83	49mm	49.10	49.70	3.9/16"	90.63	91.63	5.11/16"	144.66	145.86
15/16"	23.87	24.27	1.15/16"	49.31	49.91	3.5/8"	92.22	93.22	145mm	145.20	146.40
24mm	24.06	24.46	50mm	50.10	50.70	3.11/16"	93.81	94.81	5.3/4"	146.25	147.45
25mm	25.06	25.46	2"	50.90	51.50	95mm	95.15	96.15	5.13/16"	147.38	149.03
1"	25.46	25.86	51mm	51.10	51.70	3.3/4"	95.40	96.40	5.7/8"	149.42	150.62
9/16 BSW	25.73	26.23	52mm	52.10	52.70	3.7/8"	98.57	99.57	150mm	150.20	151.40
26mm	26.02	26.58	1.1/4 BSW	52.17	52.77	2.1/2 BSW	99.15	100.15	5.15/16"	151.01	152.21
1.1/16"	27.06	27.56	2.1/16"	52.40	53.00	100mm	100.15	101.15	4 BSW	151.46	152.66
27mm	27.08	27.58	2.1/8"	54.07	54.67	3.15/16"	100.16	101.16	6"	152.60	153.80

